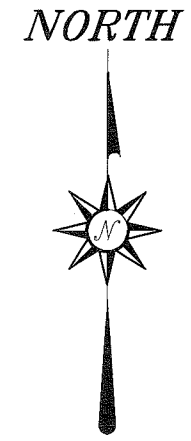
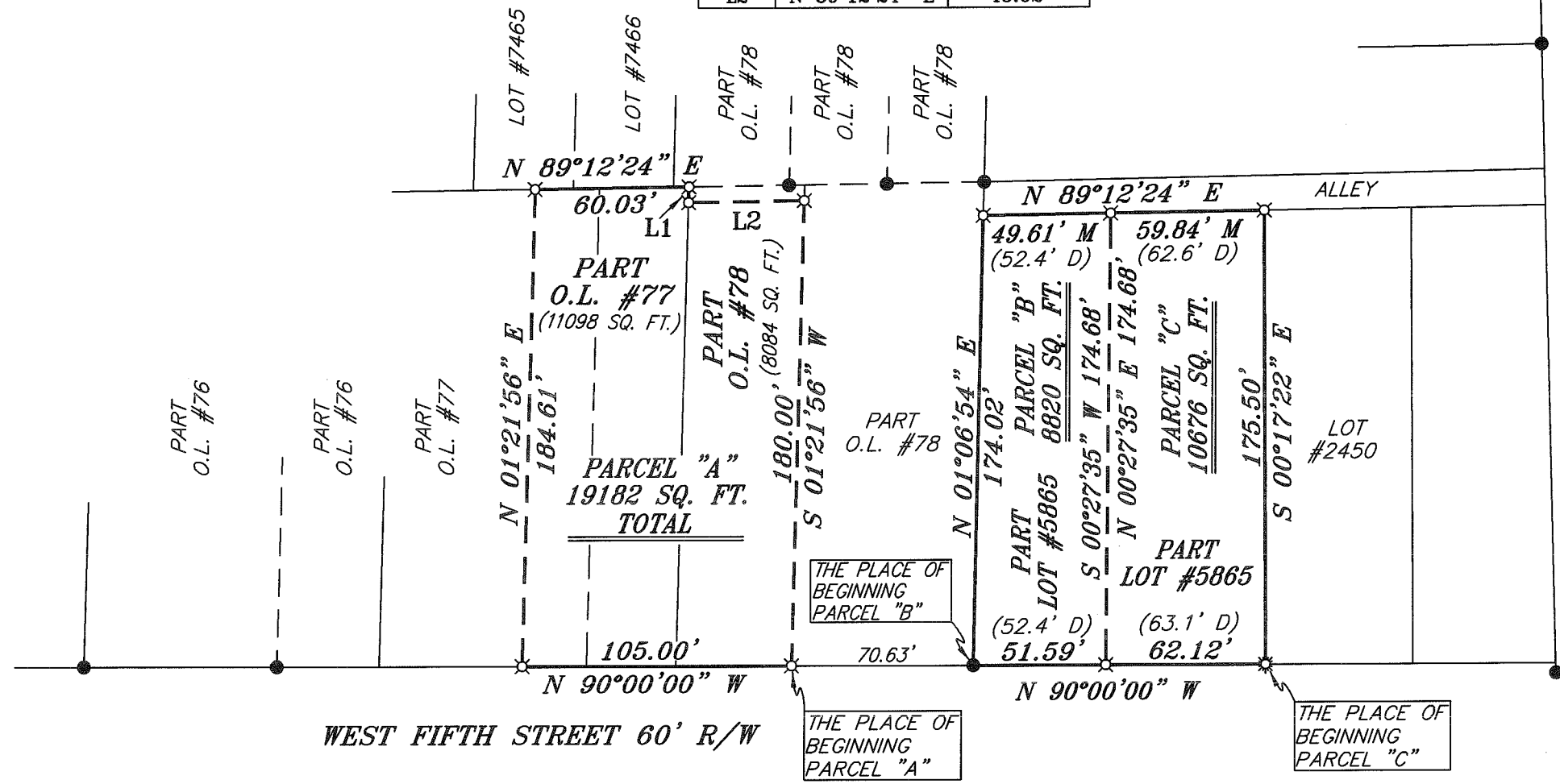


BEARINGS ARE BASED ON AN ASSUMED MERIDIAN AND ARE INTENDED TO BE USED FOR ANGULAR DETERMINATION ONLY

LINE	BEARING	DISTANCE
L1	S 01°21'56" W	6.07'
L2	N 89°12'24" E	45.02'



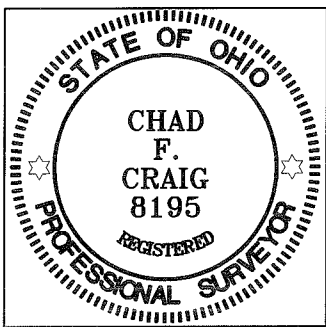
NEW SURVEY
OF EXISTING PARCEL
RICHLAND COUNTY
TAX MAP OFFICE
EAK 9-21-10
INITIAL DATE
BB-230



LEGEND

- IRON PIN FOUND
- WOODEN FENCE POST FOUND
- ⊗ DRILL HOLE SET
- ▲ RAILROAD SPIKE FOUND
- ⊗ 5/8" IRON PIN SET WITH CAP STAMPED "CRAIG 8195"

Chad F. Craig
 SURVEY BY: CHAD F. CRAIG P.S. #8195
 for SEILER & CRAIG SURVEYING INC.
 52-1/2 NORTH MAIN STREET
 MANSFIELD, OHIO 44902
 (419) 525-3644
 FAX (419) 525-3696



D = DEEDED DISTANCE
 M = MEASURED DISTANCE

SURVEY PLAT FOR	
PROPERTY TRANSFER	
PT. O.L. 77 & 78, & PT. LOT #5865	
CITY OF MANSFIELD	
RICHLAND COUNTY, OHIO	
DATE: SEPTEMBER 13, 2010	SCALE: 1"=60'
FIFTHST_226-244	

SEILER & CRAIG SURVEYING, INC.

Douglas C. Seiler, PS & Chad F. Craig, PS
52 1/2 North Main Street
Mansfield, Ohio 44902
419-525-3644 Fax 419-525-3696
www.seilerandcraig.com

SURVEY DESCRIPTION

PARCEL "A"

**PART OUTLOT #77 & PART OUTLOT #78
CITY OF MANSFIELD,
RICHLAND COUNTY, OHIO**

Situated in the City of Mansfield, County of Richland, State of Ohio and being known as Part of Outlot #77 and Part of Outlot #78 in said city, and being more particularly described as follows:

Commencing at an iron pin found and accepted as marking the southeast corner of Outlot #78, Thence, North 90 degrees 00 minutes 00 seconds West with the south line of said outlot a distance of 70.63 feet to an iron pin set, the place of beginning of the parcel herein described;

Thence, continuing North 90 degrees 00 minutes 00 seconds West with said south line and the westerly prolongation thereof a distance of 105.00 feet to an iron pin set on the south line of Outlot #77;

Thence, North 01 degree 21 minutes 56 seconds East a distance of 184.61 feet to an iron pin set on the north line of said outlot;

Thence, North 89 degrees 12 minutes 24 seconds East with said north line a distance of 60.03 feet to an iron pin set marking the northeast corner of said outlot;

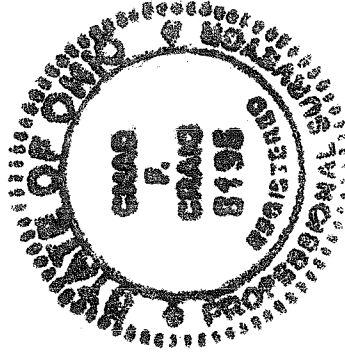
Thence, South 01 degree 21 minutes 56 seconds West with the east line of said outlot a distance of 6.07 feet to an iron pin set;

Thence, North 89 degrees 12 minutes 24 seconds East a distance of 45.02 feet to an iron pin set;

Thence, South 01 degree 21 minutes 56 seconds West a distance of 180.00 feet to the place of beginning, containing a total of 19182 square feet of which 11098 square feet are located within Part of Outlot #77 and 8084 square feet are located within Part of Outlot #78, according to survey by Chad F. Craig P.S. #8195 for Seiler and Craig Surveying, Inc. on September 13, 2010 but subject to all right of ways and easements of record.

Iron pins set are 5/8" rods with caps stamped "CRAIG 8195".

Bearings are based on an assumed meridian and are intended to be used for angular determination only.



NEW SURVEY
OF EXISTING PARCEL #
RICHLAND COUNTY
TAX MAP OFFICE
EAX 9-21-10
INITIAL DATE
BB-230

Chad F. Craig

Chad F. Craig P.S. #8195
for Seiler and Craig Surveying, Inc.

SEILER & CRAIG SURVEYING, INC.

Douglas C. Seiler, PS & Chad F. Craig, PS

52 1/2 North Main Street

Mansfield, Ohio 44902

419-525-3644 Fax: 419-525-3696

www.seilerandcraig.com

SURVEY DESCRIPTION

PARCEL "B"

PART LOT #5865
CITY OF MANSFIELD,
RICHLAND COUNTY, OHIO

Situated in the City of Mansfield, County of Richland, State of Ohio and being known as part of Lot #5865 of the consecutively numbered lots in said city, and being more particularly described as follows:

Beginning for the same at an iron pin found and accepted as marking the southwest corner of said lot, Thence, North 01 degree 06 minutes 54 seconds East with the west line of said lot a distance of 174.02 feet to an iron pin set on the northwest corner thereof;

Thence, North 89 degrees 12 minutes 24 seconds East with the north line of said lot a distance of 49.61 feet to an iron pin set;

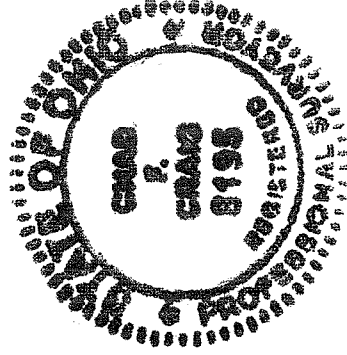
Thence, South 00 degrees 27 minutes 35 seconds West a distance of 174.68 feet to an iron pin set on the south line of said lot;

Thence, North 90 degrees 00 minutes 00 seconds West with said south line a distance of 51.59 feet to the place of beginning, containing a total of 8820 square feet according to survey by Chad F. Craig P.S. #8195 for Seiler and Craig Surveying, Inc. on September 13, 2010 but subject to all right of ways and easements of record.

Iron pins set are 5/8" rods with caps stamped "CRAIG 8195".

Bearings are based on an assumed meridian and are intended to be used for angular determination only.

NEW SURVEY
OF EXISTING PARCEL
RICHLAND COUNTY
TAX MAP OFFICE
EAV INITIAL 9-21-10 DATE
BB-230



Chad F. Craig

Chad F. Craig P.S. #8195
for Seiler and Craig Surveying, Inc.

SEILER & CRAIG SURVEYING, INC.

Douglas C. Seiler, PS & Chad F. Craig, PS

52 1/2 North Main Street

Mansfield, Ohio 44902

419-525-3644 Fax: 419-525-3696

www.seilerandcraig.com

SURVEY DESCRIPTION

PARCEL "C"

PART LOT #5865
CITY OF MANSFIELD,
RICHLAND COUNTY, OHIO

Situated in the City of Mansfield, County of Richland, State of Ohio and being known as part of Lot #5865 of the consecutively numbered lots in said city, and being more particularly described as follows:

Beginning for the same at a drill hole set marking the southeast corner of said lot, Thence, North 90 degrees 00 minutes 00 seconds West with the south line of said lot a distance of 62.12 feet to an iron pin set;

Thence, North 00 degrees 27 minutes 35 seconds East a distance of 174.68 feet to an iron pin set on the north line of said lot;

Thence, North 89 degrees 12 minutes 24 seconds East with said north line a distance of 59.84 feet to an iron pin set marking the northeast corner thereof;

Thence, South 00 degrees 17 minutes 22 seconds East with the east line of said lot a distance of 175.50 feet to the place of beginning, containing a total of 10676 square feet according to survey by Chad F. Craig P.S. #8195 for Seiler and Craig Surveying, Inc. on September 13, 2010 but subject to all right of ways and easements of record.

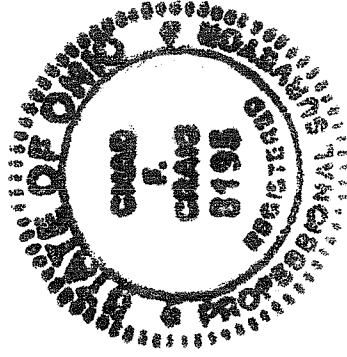
Iron pins set are 5/8" rods with caps stamped "CRAIG 8195".

Bearings are based on an assumed meridian and are intended to be used for angular determination only.

NEW SURVEY
OF EXISTING PARCEL
RICHLAND COUNTY
TAX MAP OFFICE

EAK INITIAL
9-21-10 DATE

BB-230



A handwritten signature in black ink that reads "Chad F. Craig".

Chad F. Craig P.S. #8195
for Seiler and Craig Surveying, Inc.