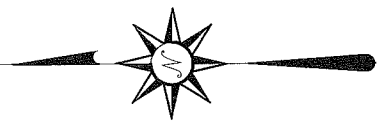
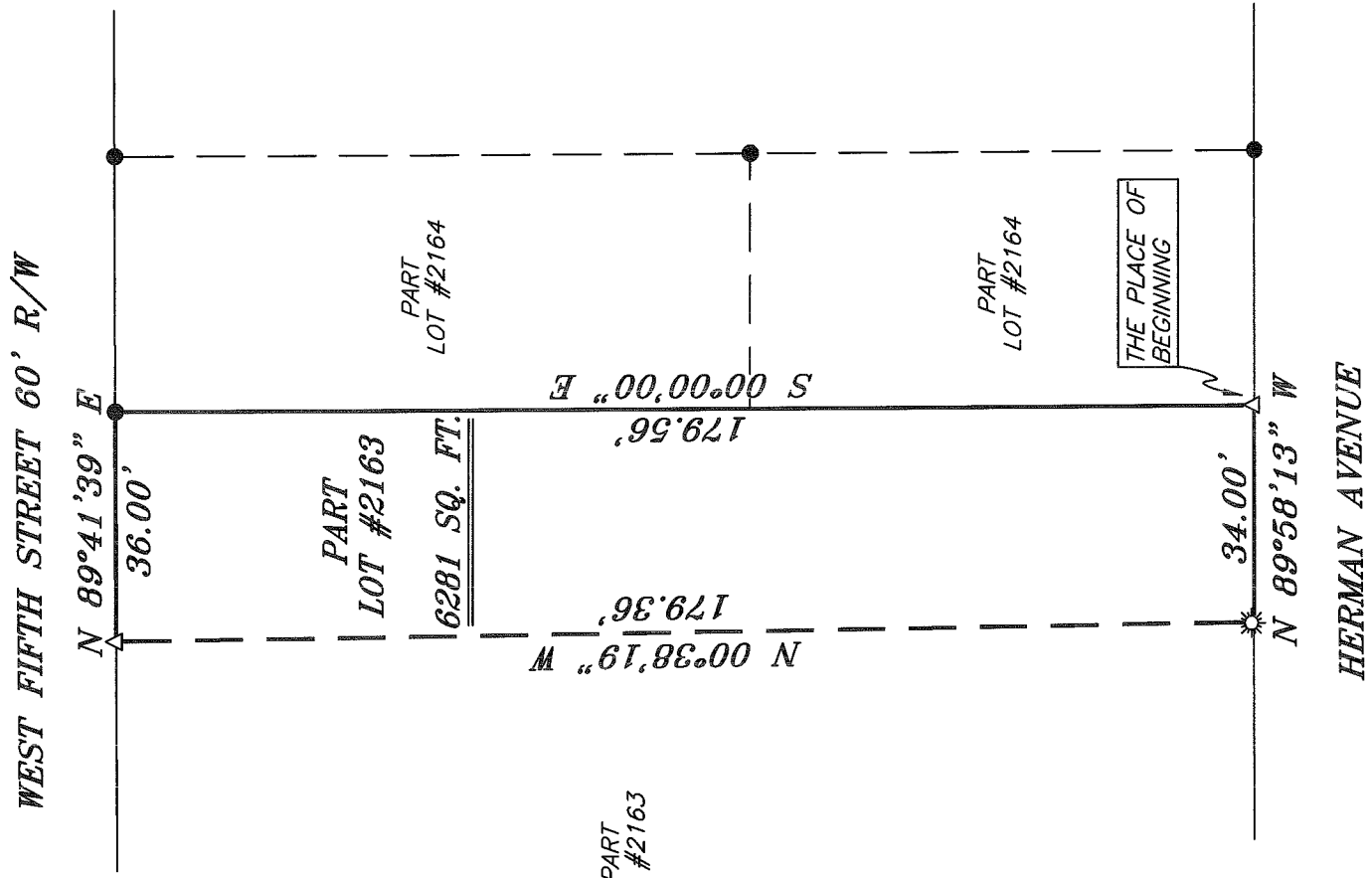




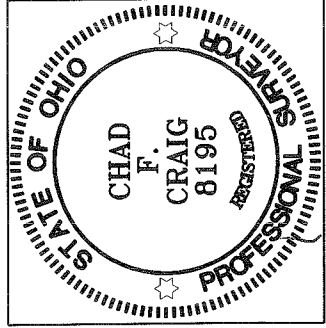
NORTH



BEARINGS ARE BASED ON AN ASSUMED  
MERIDIAN AND ARE INTENDED TO BE  
USED FOR ANGULAR DETERMINATION ONLY



NEW SURVEY  
OF EXISTING PARCEL  
RICHLAND COUNTY  
TAX MAP. OFFICE  
EAK INITIAL  
DATE 9-21-10  
BB-228



**LEGEND**

- IRON PIN FOUND
- ☼ DRILL HOLE IN CONCRETE SET
- ⊕ MAG NAIL SPIKE SET
- △ RAILROAD SPIKE SET
- ⊗ 5/8" IRON PIN SET WITH CAP STAMPED "CRAIG 8195"

*Chad F. Craig*

SURVEY BY: CHAD F. CRAIG P.S. #8195  
for SEILER & CRAIG SURVEYING INC.  
52-1/2 NORTH MAIN STREET  
MANSFIELD, OHIO 44902  
(419) 525-3644  
FAX (419) 525-3696

SURVEY PLAT FOR
PROPERTY TRANSFER
PART LOT #2163 CITY OF MANSFIELD RICHLAND COUNTY, OHIO
DATE: SEPTEMBER 9, 2010 SCALE: 1"=30' FIFTHST_303

**SEILER & CRAIG SURVEYING, INC.**

*Douglas C. Seiler, PS & Chad F. Craig, PS*

*52 1/2 North Main Street*

*Mansfield, Ohio 44902*

*419-525-3644 Fax: 419-525-3696*

*www.seilerandcraig.com*

**SURVEY DESCRIPTION**

PART LOT #2163  
CITY OF MANSFIELD,  
RICHLAND COUNTY, OHIO

Situated in the City of Mansfield, County of Richland, State of Ohio and being known as Part of Lot #2163 of the consecutively numbered lots in said city, and being more particularly described as follows:

Beginning for the same at a railroad spike set marking the southeast corner of Lot #2163, Thence, North 89 degrees 58 minutes 13 seconds West with the south line of said lot a distance of 34.00 feet to a drill hole in concrete set;

Thence, North 00 degrees 38 minutes 19 seconds West a distance of 179.36 feet to a railroad spike set on the north line of said lot;

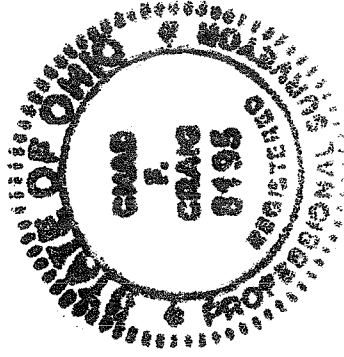
Thence, North 89 degrees 41 minutes 39 seconds East with the said north line a distance of 36.00 feet to an iron pin found marking the northeast corner of said lot;

Thence, South 00 degrees 00 minutes 00 seconds East with the east line of said lot a distance of 179.56 feet to the place of beginning, containing a total of 6281 square feet according to survey by Chad F. Craig P.S. #8195 for Seiler and Craig Surveying, Inc. on September 9, 2010 but subject to all right of ways and easements of record.

Iron pins set are 5/8" rods with caps stamped "CRAIG 8195".

Bearings are based on an assumed meridian and are intended to be used for angular determination only.

NEW SURVEY  
OF EXISTING PARCEL  
RICHLAND COUNTY  
TAX MAP OFFICE  
EAK INITIAL 9-21-10 DATE  
BB-228



*Chad F. Craig*

Chad F. Craig P.S. #8195  
for Seiler and Craig Surveying, Inc.