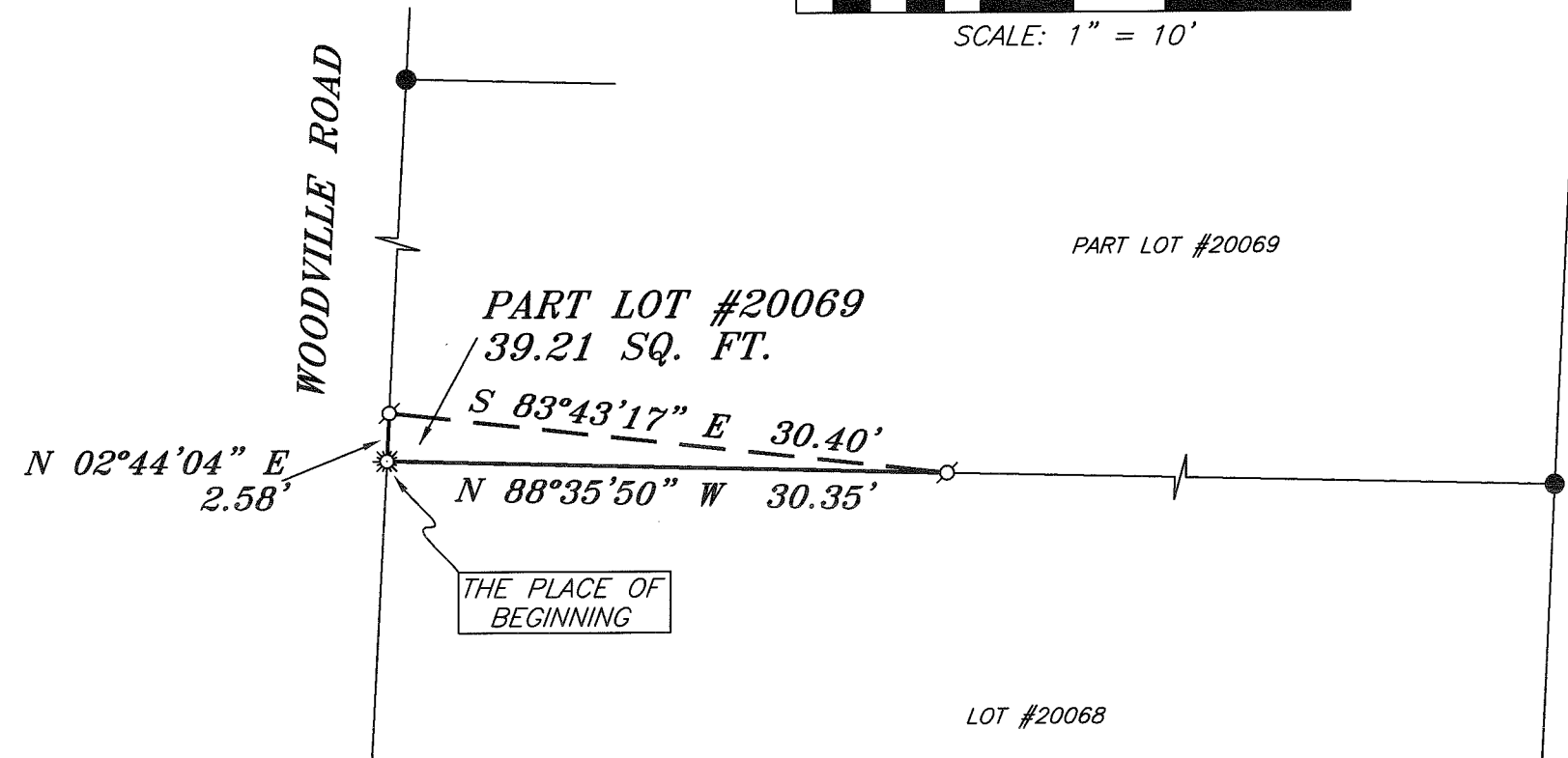
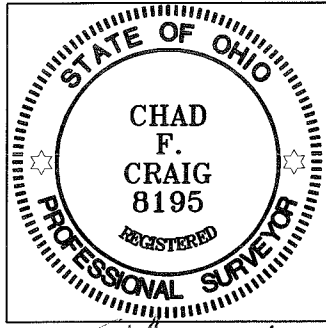


BEARINGS ARE BASED ON AN ASSUMED MERIDIAN AND ARE INTENDED TO BE USED FOR ANGULAR DETERMINATION ONLY



LEGEND

- IRON PIN FOUND
- ⊙ 2" MAG NAIL SPIKE SET
- ☀ DRILL HOLE FOUND
- ▲ RAILROAD SPIKE FOUND
- ⊗ 5/8" IRON PIN SET WITH CAP STAMPED "CRAIG 8195"



Chad F. Craig

SURVEY BY: CHAD F. CRAIG P.S. #8195
for SEILER & CRAIG SURVEYING INC.
52-1/2 NORTH MAIN STREET
MANSFIELD, OHIO 44902
(419) 525-3644
FAX (419) 525-3696

NEW SPLIT
RICHLAND COUNTY
TAX MAP OFFICE
EAK 8-20-10
INITIAL DATE
BB-201

SURVEY PLAT FOR	
WHIPKEY	
PART LOT #20069 CITY OF MANSFIELD RICHLAND COUNTY, OHIO	
DATE: AUGUST 9, 2010	SCALE: 1"=10'
WOODVILLERD_607_PLAT	

SEILER & CRAIG SURVEYING, INC.

Douglas C. Seiler, PS & Chad F. Craig, PS

52 1/2 North Main Street

Mansfield, Ohio 44902

419-525-3644 Fax: 419-525-3696

www.seilerandcraig.com

SURVEY DESCRIPTION

PART LOT #20069
CITY OF MANSFIELD,
RICHLAND COUNTY, OHIO

Situated in the City of Mansfield, County of Richland, State of Ohio and being known as Part Lot #20069 of the consecutively numbered lots in said city, and being more particularly described as follows:

Beginning for the same at an drill hole found marking the southwest corner of Lot #20069, Thence, North 02 degrees 44 minutes 04 seconds East with the west line of said lot a distance of 2.58 feet to a 2 inch Mag Nail spike set;

Thence, South 83 degrees 43 minutes 17 seconds East a distance of 30.40 feet to a 2 inch Mag Nail spike set on the south line of said lot;

Thence, North 88 degrees 35 minutes 50 seconds West with said south line a distance of 30.35 feet to the place of beginning, containing 39.21 square feet according to survey by Chad F. Craig P.S. #8195 for Seiler and Craig Surveying, Inc. on August 9, 2010, but subject to all right of ways and easements of record.

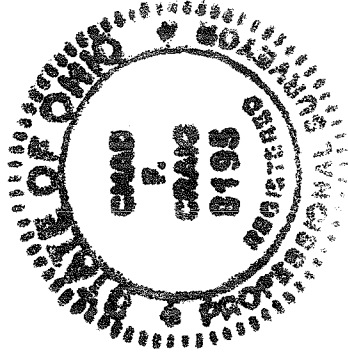
Iron pins set are 5/8" rods with caps stamped "CRAIG 8195".

Bearings are based on an assumed meridian and are intended to be used for angular determination only.

The grantees, his heirs and assigns do hereby covenant and agree that the parcel of land described in this instrument or any portion thereof does not constitute a principal building site under applicable zoning and will not be conveyed by said grantees, heirs and assigns independent and separate from any adjoining or contiguous parcel fronting on a public highway or street.

NEW SPLIT
RICHLAND COUNTY
TAX MAP OFFICE

EAX 8-20-10
INITIAL DATE
BB-201



Chad F. Craig

Chad F. Craig P.S. #8195
for Seiler and Craig Surveying, Inc.