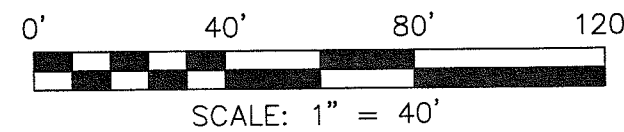
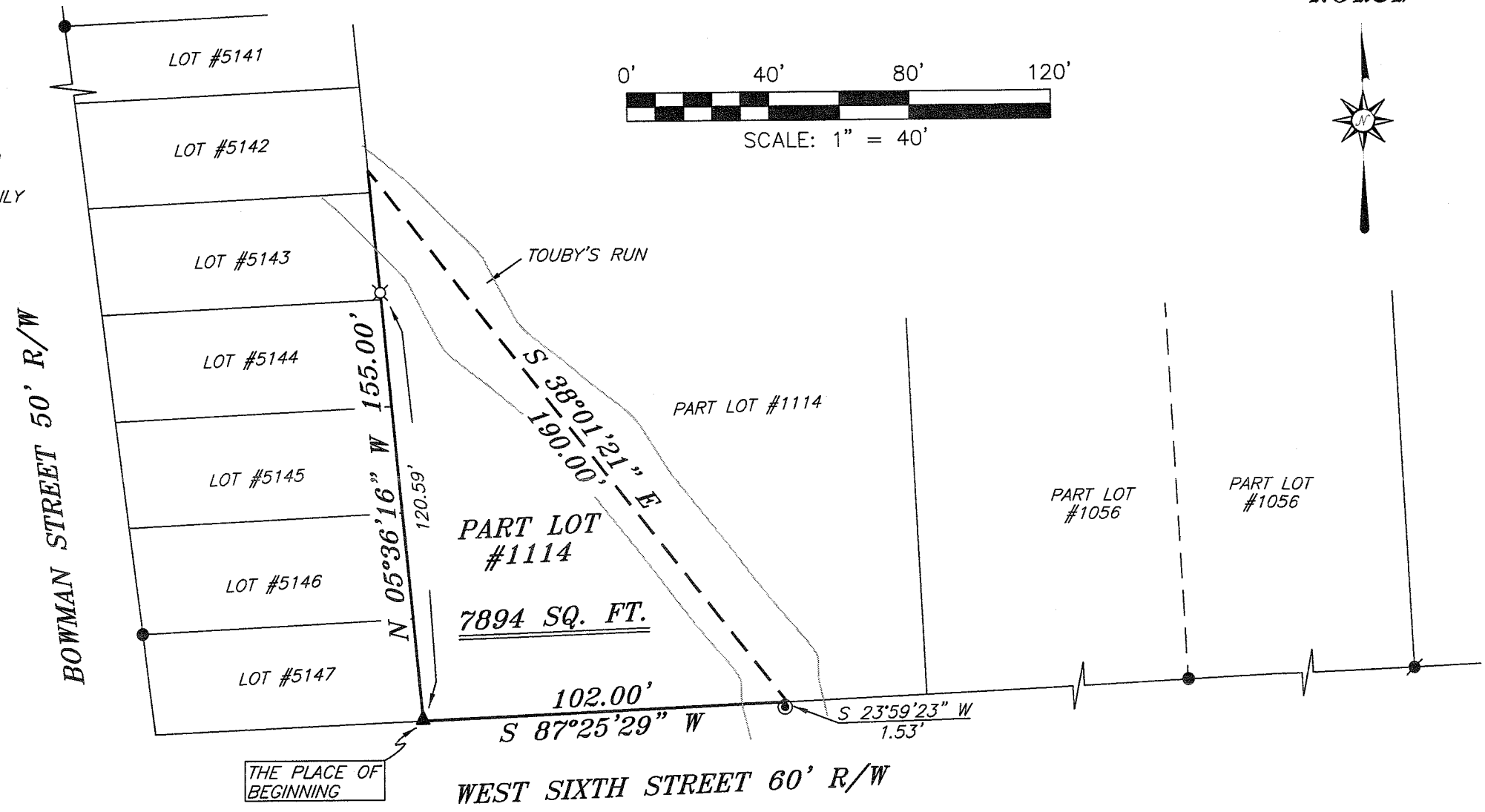


NORTH

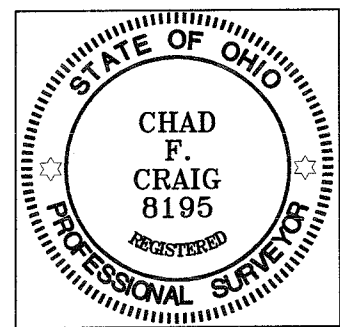


BEARINGS ARE BASED ON AN ASSUMED MERIDIAN AND ARE INTENDED TO BE USED FOR ANGULAR DETERMINATION ONLY



NEW SURVEY
OF EXISTING PARCEL
RICHLAND COUNTY
TAX MAP OFFICE
FAK 8-16-10
INITIAL DATE
BB-194

Chad F. Craig
SURVEY BY: CHAD F. CRAIG P.S. #6269
for SEILER & CRAIG SURVEYING INC.
52-1/2 NORTH MAIN STREET
MANSFIELD, OHIO 44902
(419) 525-3644
FAX (419) 525-3696



- LEGEND**
- IRON PIN FOUND
 - ⊙ MAG NAIL SPIKE FOUND
 - ▲ RAILROAD SPIKE SET
 - ⊙ DRILL HOLE SET
 - ⊗ 5/8" IRON PIN SET WITH CAP STAMPED "CRAIG 8195"

SURVEY PLAT FOR	
MAWER	
PART LOT #1114 CITY OF MANSFIELD RICHLAND COUNTY, OHIO	
DATE: AUGUST 3, 2010	SCALE: 1"=40'
SIXTH_196	

SEILER & CRAIG SURVEYING, INC.

Douglas C. Seiler, PS & Chad F. Craig, PS

52 1/2 North Main Street

Mansfield, Ohio 44902

419-525-3644 Fax: 419-525-3696

www.seilerandcraig.com

SURVEY DESCRIPTION

PART LOT #11114
CITY OF MANSFIELD,
RICHLAND COUNTY, OHIO

Situated in the City of Mansfield, County of Richland, State of Ohio and being known as part Lot #11114 of the consecutively numbered lots in said city, and being more particularly described as follows:

Beginning for the same at a railroad spike set marking the southwest corner of Lot #11114, Thence, North 05 degrees 36 minutes 16 seconds West with the west line of said lot and passing through an iron pin set for reference at a distance of 120.59 feet, a total distance of 155.00 feet to a point;

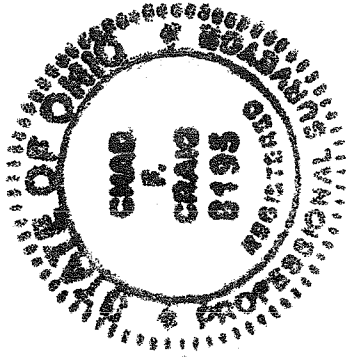
Thence, South 38 degrees 01 minute 21 seconds East a distance of 190.00 feet to a point on the south line of said lot referenced by a drill hole set on a bearing of South 23 degrees 59 minutes 23 seconds West and at a distance of 1.53 feet;

Thence, South 87 degrees 25 minutes 29 seconds West with said south line a distance of 102.00 feet to the place of beginning, containing a total of 7894 square feet according to survey by Chad F. Craig P.S. #8195 for Seiler and Craig Surveying, Inc. on August 3, 2010, but subject to all right of ways and easements of record.

Iron pins set are 5/8" rods with caps stamped "CRAIG 8195".

Bearings are based on an assumed meridian and are intended to be used for angular determination only.

NEW SURVEY
OF EXISTING PARCEL
RICHLAND COUNTY
TAX MAP OFFICE
EAK 8/16/10
INITIAL DATE
BB-194



Chad F. Craig

Chad F. Craig P.S. #8195
for Seiler and Craig Surveying, Inc.