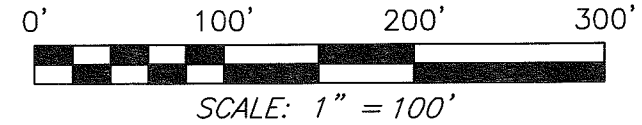


BEARINGS ARE BASED ON AN ASSUMED MERIDIAN AND ARE INTENDED TO BE USED FOR ANGULAR DETERMINATION ONLY



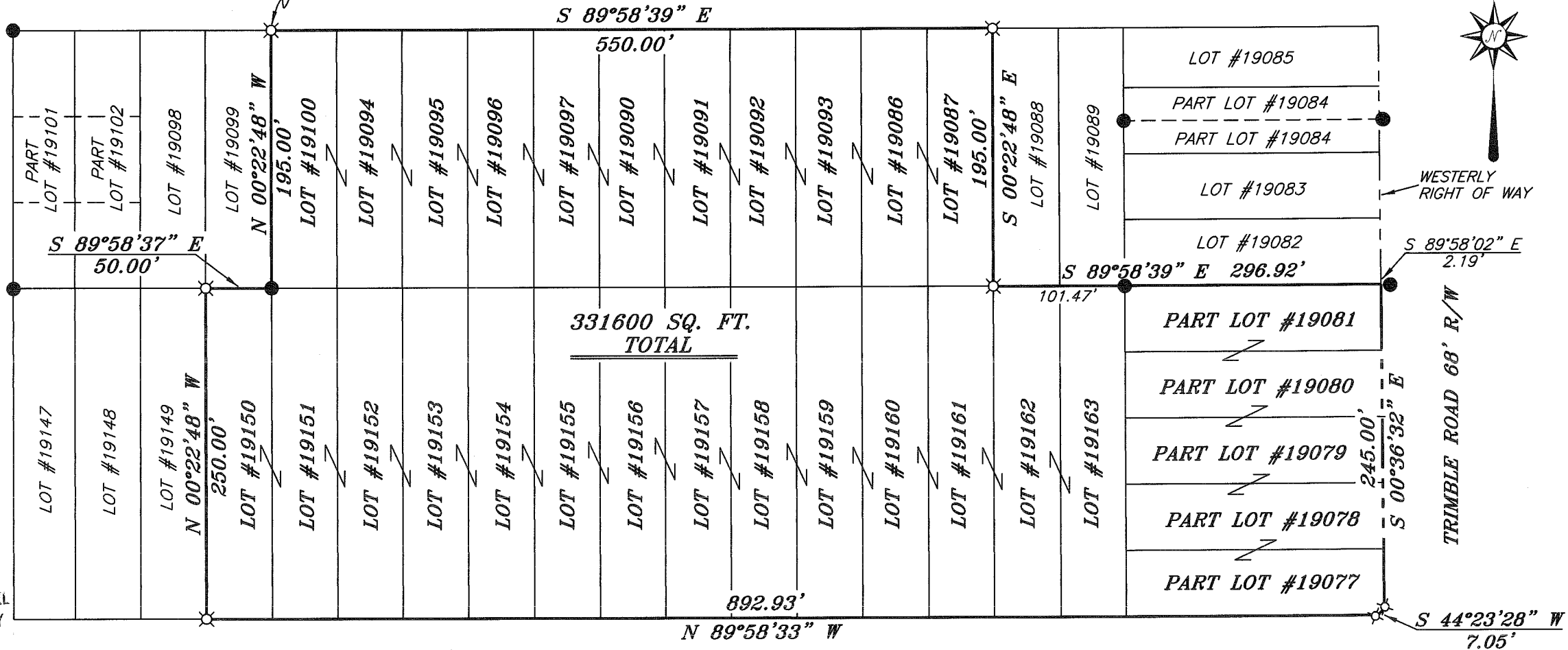
NORTH



THE PLACE OF BEGINNING

CALDWELL STREET 60' R/W

CONCORD STREET 60' R/W



NEW SURVEY OF EXISTING PARCEL
RICHLAND COUNTY
TAX MAP OFFICE

EAK 8-12-10
INITIAL DATE
BB-192

Chad F. Craig

SURVEY BY: CHAD F. CRAIG P.S. #8195
for SEILER & CRAIG SURVEYING INC.
52-1/2 NORTH MAIN STREET
MANSFIELD, OHIO 44902
(419) 525-3644
FAX (419) 525-3696



WYANDOTTE AVENUE 60' R/W

LEGEND

- IRON PIN FOUND
- △ RAILROAD SPIKE SET
- ▲ RAILROAD SPIKE FOUND
- ⊗ 5/8" IRON PIN SET WITH CAP STAMPED "CRAIG 8195"

SURVEY PLAT FOR	
FOUNDATION ACADEMY INC.	
PART LOTS #19077-#19081, LOTS #19086, #19087, #19090-#19097, #19100, & #19150-#19163	
CITY OF MANSFIELD RICHLAND COUNTY, OHIO	
DATE: AUGUST 3, 2010	SCALE: 1"=100'
WYANDOTTE1050	

SEILER & CRAIG SURVEYING, INC.

Douglas C. Seiler, PS & Chad F. Craig, PS
52 1/2 North Main Street
Mansfield, Ohio 44902
419-525-3644 Fax 419-525-3696
www.seilerandcraig.com

SURVEY DESCRIPTION

PART LOTS #19077-#19081, LOTS #19086, #19087,
#19090-#19097, #19100, & #19150-#19163

CITY OF MANSFIELD,
RICHLAND COUNTY, OHIO

Situated in the City of Mansfield, County of Richland, State of Ohio and being known as part Lots #19077 - #19081, and of Lot #19086, #19087, #19090 - #19097, #19100, & #19150 - #19163 of the consecutively numbered lots in said city, and being more particularly described as follows:

Beginning for the same at an iron pin set marking the northwest corner of Lot #19100, Thence, South 89 degrees 58 minutes 39 seconds East with the north line of said lot and the easterly prolongation thereof a distance of 550.00 feet to an iron pin set marking the northeast corner of Lot #19087;

Thence, South 00 degrees 22 minutes 48 seconds East with the east line of said lot a distance of 195.00 feet to an iron pin set marking the southeast corner thereof, said iron pin also marking the northwest corner of Lot #19162;

Thence, South 89 degrees 58 minutes 39 seconds East with the north line of said lot and the easterly prolongation thereof, passing through an iron pin found at a distance of 101.47 feet, a total distance of 296.92 feet to a point on the westerly right of way of Trimble Road, said point referenced by an iron pin found on a bearing of South 89 degrees 58 minutes 02 seconds East and at a distance of 2.19 feet;

Thence, South 00 degrees 36 minutes 32 seconds East with said right of way a distance of 245.00 feet to an iron pin set;

Thence, South 44 degrees 23 minutes 28 seconds West with said right of way a distance of 7.05 feet to an iron pin set on the south line of Lot #19077;

Thence, North 89 degrees 58 minutes 33 seconds West with the south line of said lot and the westerly prolongation thereof a distance of 892.93 feet to an iron pin set marking the southwest corner of Lot #19150;

Thence, North 00 degrees 22 minutes 48 seconds West with the west line of said lot a distance of 250.00 feet to an iron pin set marking the northwest corner thereof;

Thence, South 89 degrees 58 minutes 37 seconds East with the north line of said lot a distance of 50.00 feet to an iron pin found marking the northeast corner of said lot the same as being the southwest corner of Lot #19100;

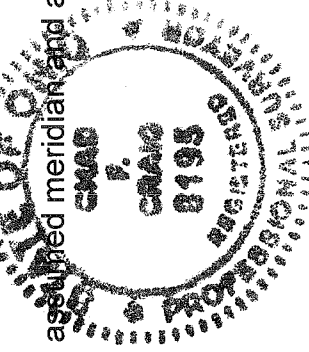
Thence, North 00 degrees 22 minutes 48 seconds West with the west line of said lot a distance of 195.00 feet to the place of beginning, containing a total of 331600 square feet according to survey by Chad F. Craig P.S. #8195 for Seiler and Craig Surveying, Inc. on August 3, 2010, but subject to all right of ways and easements of record.

Iron pins set are 5/8" rods with caps stamped "CRAIG 8195".

Bearings are based on an assumed meridian and are intended to be used for angular determination only.

NEW SURVEY
OF EXISTING PARCEL
RICHLAND COUNTY
TAX MAP OFFICE

EAK 8-17-10
INITIAL DATE
BB-197



A handwritten signature in cursive that reads "Chad F. Craig".

Chad F. Craig P.S. #8195
for Seiler and Craig Surveying, Inc.