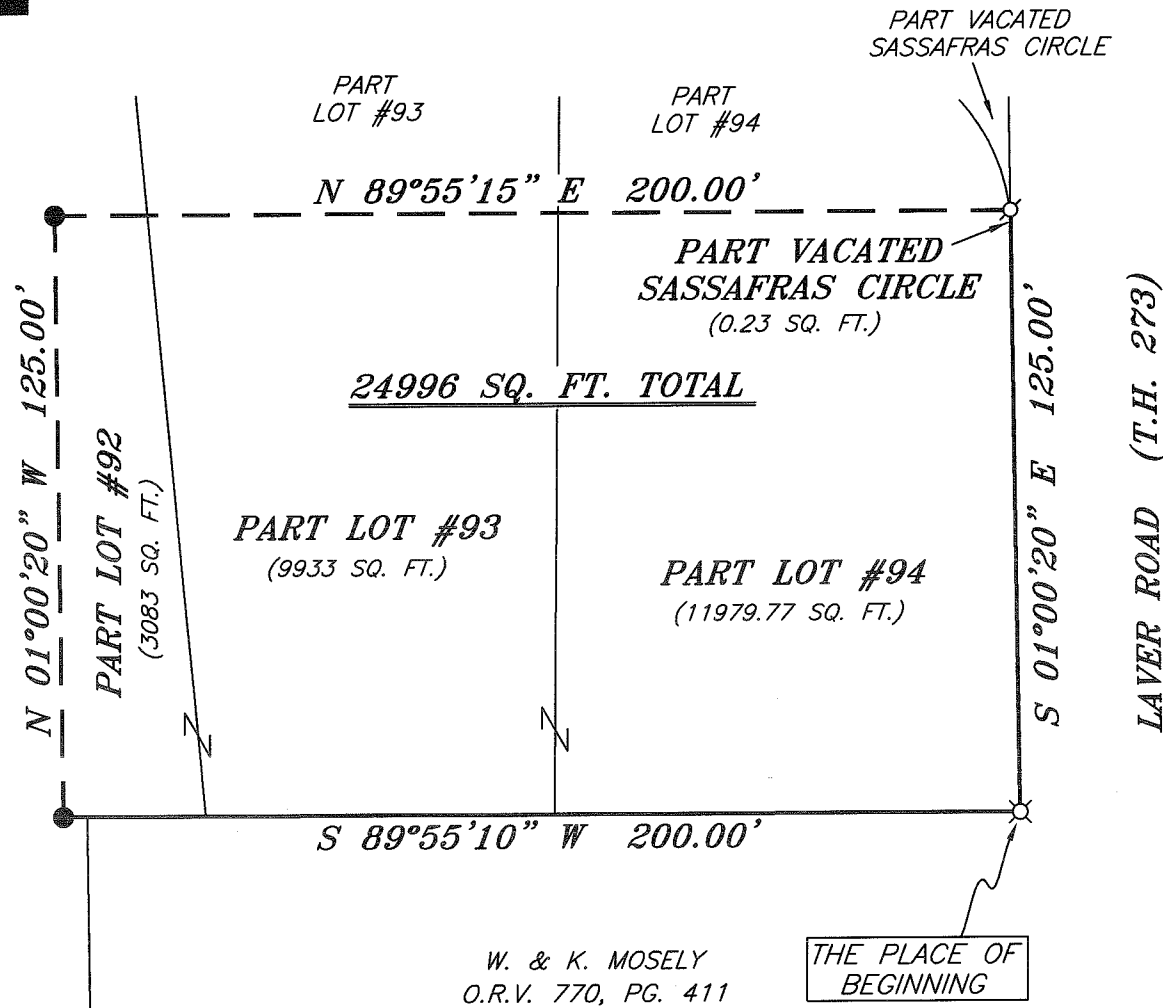


BEARINGS ARE BASED ON SURVEY F-2-308 ON FILE AT THE RICHLAND COUNTY TAX MAP OFFICE AND ARE INTENDED TO BE USED FOR ANGULAR DETERMINATION ONLY



LEGEND

- IRON PIN FOUND
- ⊗ 2" MAG NAIL SPIKE SET IN ASPHALT ON TOP OF CONCRETE
- △ RAILROAD SPIKE SET
- ▲ RAILROAD SPIKE FOUND
- ⊗ 5/8" IRON PIN SET WITH CAP STAMPED "CRAIG 8195"



NEW SURVEY
 OF EXISTING PARCEL
 RICHLAND COUNTY
 TAX MAP OFFICE
 EAK 7-8-10
 INITIAL DATE
 BB-163

SURVEY BY: *Chad F. Craig*
 CHAD F. CRAIG P.S. #8195/
 for SEILER & CRAIG SURVEYING INC.
 52-1/2 NORTH MAIN STREET
 MANSFIELD, OHIO 44902
 (419) 525-3644
 FAX (419) 525-3696

SURVEY PLAT FOR	
PROPERTY TRANSFER	
PT. LOTS #92, #93, & #94, AND PART VACATED SASSAFRAS CIRCLE, HEATHERWOOD ALLOT. BLK. "D" MIFFLIN TWP., RICHLAND COUNTY, OHIO	
DATE: JUNE 28, 2010	SCALE: 1"=40'
SASSAFRAS-CIR	

SEILER & CRAIG SURVEYING, INC.

Douglas C. Seiler, PS & Chad F. Craig, PS
52 ½ North Main Street
Mansfield, Ohio 44902
419-525-3644 Fax: 419-525-3696
www.seilerandcraig.com

SURVEY DESCRIPTION

PART LOT #92, PART LOT #93, AND PART LOT #94 AND PART
VACATED SASSAFRAS CIRCLE, HEATHERWOOD ALLOTMENT, BLOCK "D"
MIFFLIN TOWNSHIP, RICHLAND COUNTY, OHIO

Situated in the Township of Mifflin, County of Richland, State of Ohio and being Part Lot #92, Part Lot #93, and Part Lot #94, in Heatherwood Allotment Block "D" (Plat Volume 23, Page 39) and being more particularly described as follows:

Beginning for the same at an iron pin set marking the southeast corner of Lot #94, Thence, South 89 degrees 55 minutes 10 seconds West with the south line of said lot and the westerly prolongation thereof a distance of 200.00 feet to an iron pin found;

Thence, North 01 degree 00 minutes 20 seconds West a distance of 125.00 feet to an iron pin found;

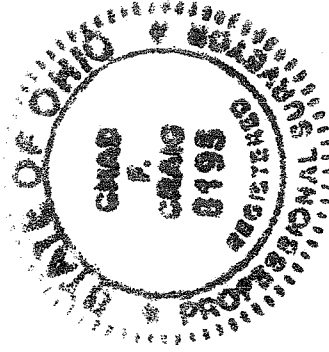
Thence, North 89 degrees 55 minutes 15 seconds East a distance of 200.00 feet to a 2 inch Mag Nail Spike set on the east line of vacated Sassafras Circle;

Thence, South 01 degree 00 minutes 20 seconds East with said east line and the prolongation thereof distance of 125.00 feet to the place of beginning, containing 24996 Sq. Ft of which 3083 Sq. Ft. are in Part Lot #92, 9933 Sq. Ft. are in Part Lot #93, and 11979.77 Sq. Ft. are in Part Lot #94, 0.23 Sq. Ft. are in Part Vacated Sassafras Circle according to survey by Chad F. Craig P. S. #8195 for Seiler & Craig Surveying, Inc. on June 28, 2010 but subject to all right of ways and easements of record.

Iron pins set are 5/8" rods with caps stamped "CRAIG 8195".

Bearings are based on survey F-2-308 on file at the Richland County Tax Map Office and are intended to be used for angular determination only.

NEW SURVEY
OF EXISTING PARCEL
RICHLAND COUNTY
TAX MAP OFFICE
EAK INITIAL
7-8-10 DATE
BB-163



A handwritten signature in black ink that reads "Chad F. Craig".

Chad F. Craig P. S. #8195
for Seiler & Craig Surveying, Inc.