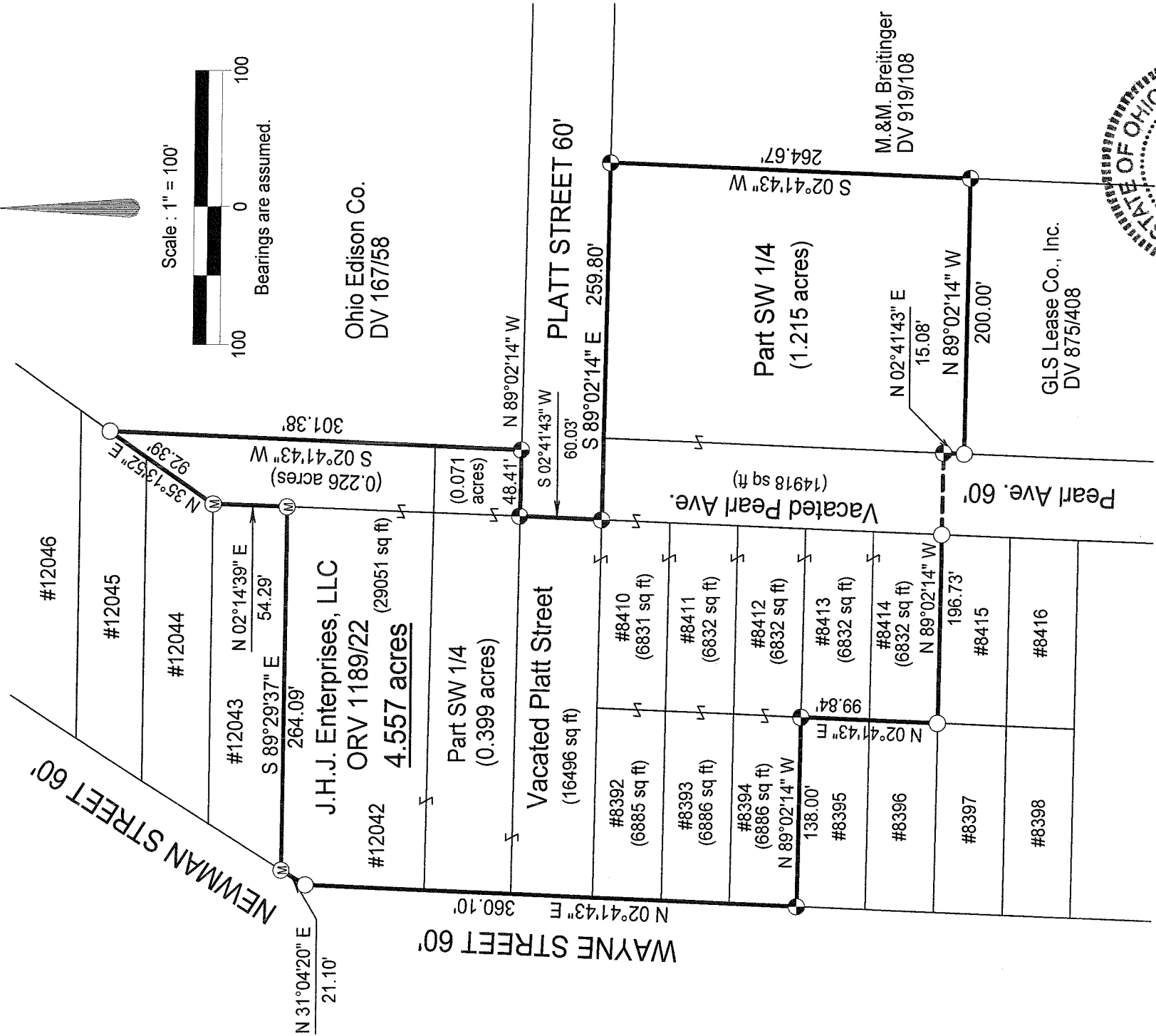
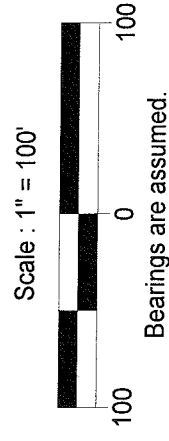
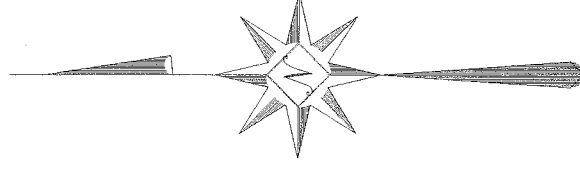


SURVEY PLAT

Lots #8392 thru #8394, Lots #8410 thru #8414, Lot #12042, Vacated parts of Platt and Pearl Streets, and parts of the Southwest Quarter of Section 15 of Madison Township, T-21, R-18

City of Mansfield
Richland County, Ohio



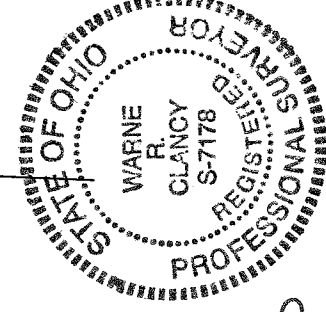
LEGEND

- Iron pin set with cap stamped "CLANCY 7178"
- Iron pin found
- ⊗ Concrete monument found

NEW SURVEY
OF EXISTING PARCEL
RICHLAND COUNTY,
TAX MAP. OFFICE

INITIAL
BB-155

DATE
6-23-10



Warne R. Clancy
Warne R. Clancy
P.S. #7178

DATE: 6/14/10
JOB NO.: W060110

SURVEY DESCRIPTION

**Lots #8392 thru #8394, Lots #8410 thru #8414,
Lot #12042, Vacated parts of Platt and Pearl
Streets, and parts of the Southwest Quarter of
Section 15 of Madison Township, T-21, R-18**

City of Mansfield

Richland County, Ohio

Situated in the City of Mansfield, County of Richland, State of Ohio, and being Lots #8392 thru #8394, Lots #8410 thru #8414, Lot #12042 of the consecutively numbered lots of said City, vacated parts of Platt and Pearl Streets, and parts of the Southwest Quarter of Section 15 of Madison Township, T-21, R-18, more particularly described as follows:

Beginning for the same at a Concrete monument found marking the northwest corner of said Lot #12042, the same being a point on the east right-of-way line of Newmnan Street (60'); Thence, South 89 degrees 29 minutes 37 seconds East, a distance of 264.09 feet to a Concrete monument found marking the northeast corner of said lot;

Thence, North 02 degrees 14 minutes 39 seconds East, a distance of 54.29 feet to a Concrete monument found marking the southeast corner of Lot #12044 of the said consecutively numbered lots;

Thence, North 35 degrees 13 minutes 52 seconds East with the east line of said lot and the northeasterly projection thereof, a distance of 92.39 feet to an iron pin found on the westerly line of a parcel owned by the Ohio Edison Co. (DV 167/58);

Thence, South 02 degrees 41 minutes 43 seconds West with said westerly line, a distance of 301.38 feet to an iron pin set on the north right-of-way line of Platt Street (60');

Thence, North 89 degrees 02 minutes 14 seconds West with said right-of-way line, a distance of 48.41 feet to an iron pin set thereon;

Thence, South 02 degrees 41 minutes 43 seconds West, a distance of 60.03 feet to an iron pin set on the south right-of-way line of Platt Street;

Thence, South 89 degrees 02 minutes 14 seconds East with said right-of-way line, a distance of 259.80 feet to an iron pin set marking the northwest corner of a parcel owned by M. & M. Breitingner (DV 919/108);

Thence, South 02 degrees 41 minutes 43 seconds West with the west line of said parcel, a distance of 264.67 feet to an iron pin set marking the northeast corner of a parcel owned by GLS Lease Co. (DV 875/408);

Thence, North 89 degrees 02 minutes 14 seconds West, a distance of 200.00 feet to an iron pin found marking the northwest corner of said parcel, the same being a point on the east right-of-way line of Pearl Avenue (60');

Thence, North 02 degrees 41 minutes 43 seconds East with said right-of-way line, a distance of 15.08 feet to an iron pin set thereon;

Thence, North 89 degrees 02 minutes 14 seconds West, a distance of 196.73 feet to an iron pin found marking the southwest corner of said Lot #8414;

Thence, North 02 degrees 41 minutes 43 seconds East, a distance of 99.84 feet to an iron pin set marking the southeast corner of said Lot #8394;

Thence, North 89 degrees 02 minutes 14 seconds West with the south line of said lot, a distance off 138.00 feet to an iron pin set on the east right-of-way line of Wayne Street (60');

Thence, North 02 degrees 41 minutes 43 seconds East with said right-of-way line, a distance of 360.10 feet to an iron pin found marking its intersection with the said east Newman Street right-of-way line;

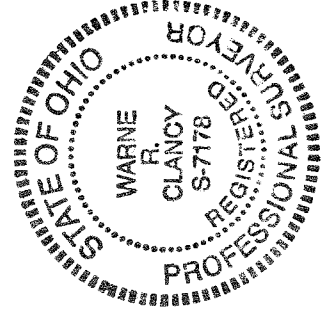
Thence, North 31 degrees 04 minutes 20 seconds East with said right-of-way line, a distance of 21.10 feet to the Place of Beginning, containing 4.557 acres according to survey by Warne R. Clancy, Professional Surveyor #7178, on June 1, 2010.

Iron pins set are #5 rebars with caps stamped "CLANCY 7178".

Bearings are assumed.

NEW SURVEY
OF EXISTING PARCEL
RICHLAND COUNTY
TAX MAP OFFICE

INITIAL EAK
DATE 6-23-10
BB-155



Warne R. Clancy
Warne R. Clancy

P.S.-7178