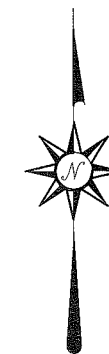


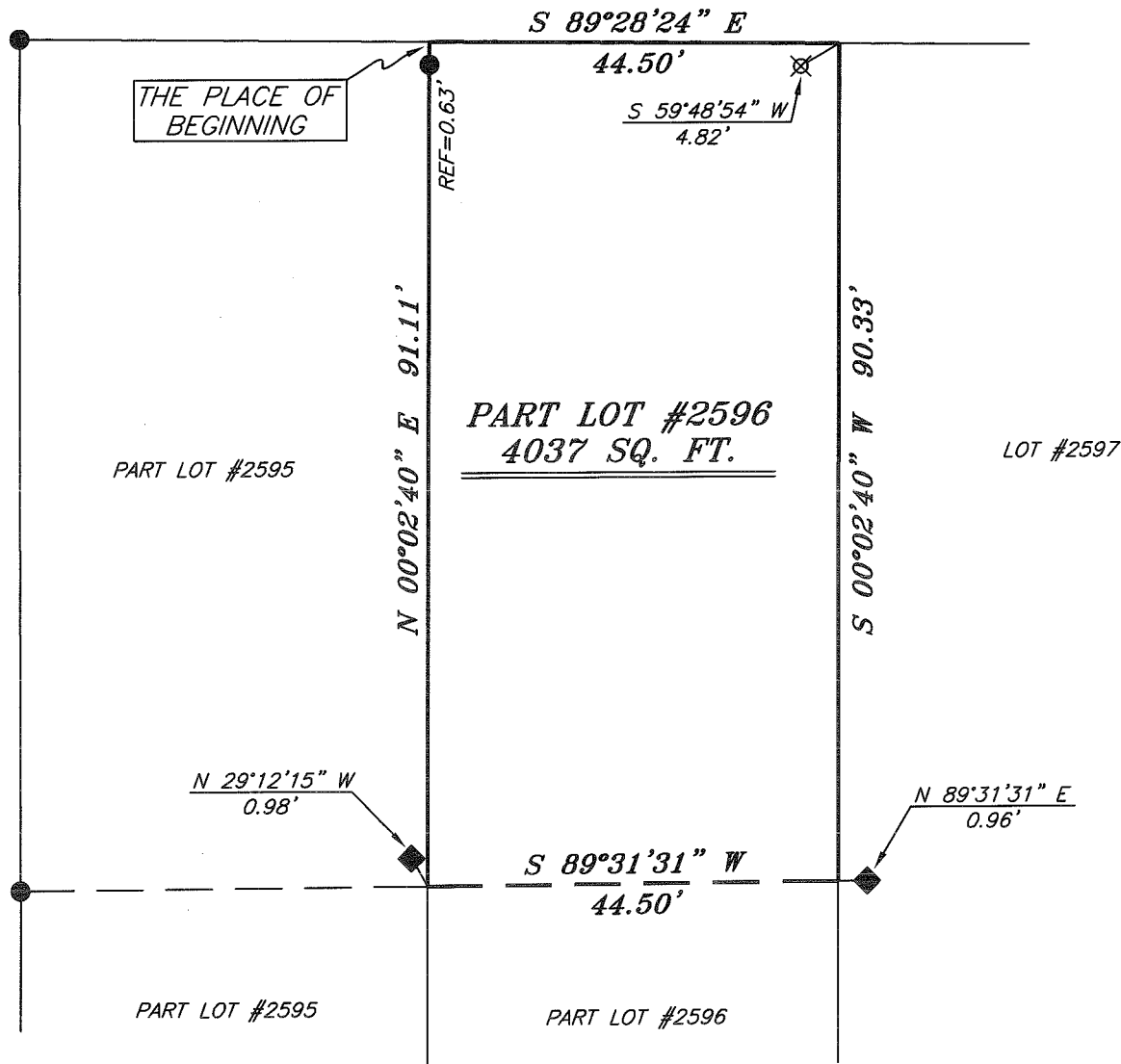
EAST FIRST STREET 60' R/W

NORTH



BEARINGS ARE BASED ON AN ASSUMED MERIDIAN AND ARE INTENDED TO BE USED FOR ANGULAR DETERMINATION ONLY

HEDGES STREET 60' R/W



PART LOT #2596
4037 SQ. FT.

LEGEND

- IRON PIN FOUND
- ◆ METAL "T" POST FOUND
- △ RAILROAD SPIKE SET
- ▲ RAILROAD SPIKE FOUND
- ⊗ 5/8" IRON PIN SET WITH CAP STAMPED "CRAIG 8195"



Chad F. Craig

SURVEY BY: CHAD F. CRAIG P.S. #8195
for SEILER & CRAIG SURVEYING INC.
52-1/2 NORTH MAIN STREET
MANSFIELD, OHIO 44902
(419) 525-3644
FAX (419) 525-3696

NEW SURVEY
OF EXISTING PARCEL
RICHLAND COUNTY
TAX MAP OFFICE

EAK 6-22-10
INITIAL DATE
BB-152

| | |
|--|---------------|
| SURVEY PLAT FOR | |
| PROPERTY TRANSFER | |
| PART LOT #2596 CITY OF MANSFIELD RICHLAND COUNTY, OHIO | |
| DATE: JUNE 10, 2010 | SCALE: 1"=20' |
| FIRST178 | |

SEILER & CRAIG SURVEYING, INC.

Douglas C. Seiler, PS & Chad F. Craig, PS

52 ½ North Main Street

Mansfield, Ohio 44902

419-525-3644 Fax: 419-525-3696

www.seilerandcraig.com

SURVEY DESCRIPTION

PART LOT #2596
CITY OF MANSFIELD,
RICHLAND COUNTY, OHIO

Situated in the City of Mansfield, County of Richland, State of Ohio and being known as part of Lot #2596 of the consecutively numbered lots in said city, and being more particularly described as follows:

Beginning for the same at a point marking the northwest corner of Lot #2596, said point referenced by an iron pin found on a bearing of South 00 degrees 02 minutes 40 seconds East and at a distance of 0.63 feet, Thence, South 89 degrees 28 minutes 24 seconds East with the north line of said lot a distance of 44.50 feet to a point referenced by an iron pin set on a bearing of South 59 degrees 48 minutes 54 seconds West and at a distance of 4.82 feet, said point marking the northeast corner of said lot;

Thence, South 00 degrees 02 minutes 40 seconds West with the east line of said lot a distance of 90.33 feet to a point referenced by a metal "T" post found on a bearing of North 89 degrees 31 minutes 31 seconds East and at a distance of 0.96 feet;

Thence, South 89 degrees 31 minutes 31 seconds West a distance of 44.50 feet to a point on the west line of said lot referenced by a metal "T" post found on a bearing of North 29 degrees 12 minutes 15 seconds West and at a distance of 0.98 feet;

Thence, North 00 degrees 02 minutes 40 seconds East with the west line of said lot and passing through an iron pin found at a distance of 90.48 feet, a total distance of 91.11 feet to the place of beginning, containing a total of 4037 square feet according to survey by Chad F. Craig P.S. #8195 for Seiler and Craig Surveying, Inc. on June 10, 2010 but subject to all right of ways and easements of record.

Iron pins set are 5/8" rods with caps stamped "CRAIG 8195".

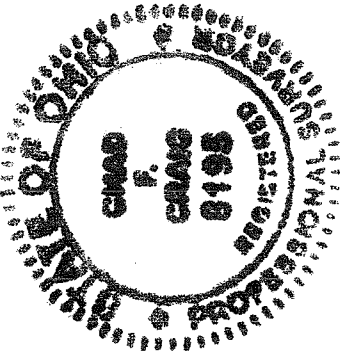
Bearings are based on an assumed meridian and are intended to be used for angular determination only.

NEW SURVEY
OF EXISTING PARCEL
RICHLAND COUNTY,
TAX MAP, OFFICE

EAK
INITIAL

6-22-10
DATE

BB-15Z



A handwritten signature in black ink that reads "Chad F. Craig".

Chad F. Craig P.S. #8195
for Seiler and Craig Surveying, Inc.