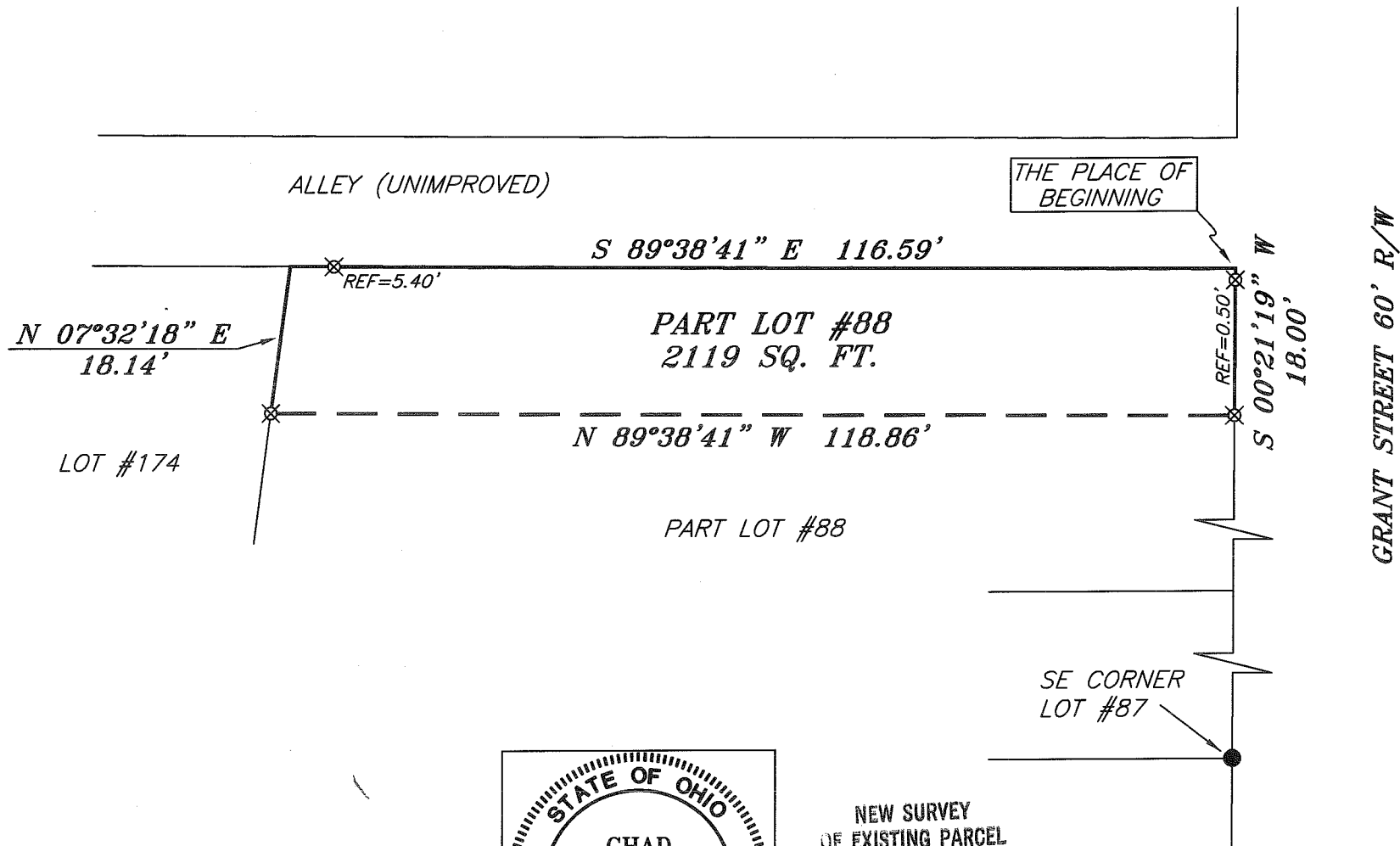
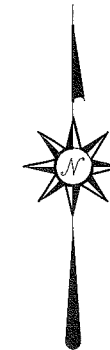


BEARINGS ARE BASED ON SURVEY Q-44 ON FILE AT THE RICHLAND COUNTY TAX MAP OFFICE AND ARE INTENDED TO BE USED FOR ANGULAR DETERMINATION ONLY

NORTH



**LEGEND**

- IRON PIN FOUND
- ⊕ 2" MAG NAIL SPIKE SET
- △ RAILROAD SPIKE SET
- ▲ RAILROAD SPIKE FOUND
- ⊗ 5/8" IRON PIN SET WITH CAP STAMPED "CRAIG 8195"



NEW SURVEY  
OF EXISTING PARCEL  
RICHLAND COUNTY.  
TAX MAP OFFICE  
EAC 5-6-10  
INITIAL DATE  
BB-98

*Chad F. Craig*  
SURVEY BY: CHAD F. CRAIG P.S. #8195  
for SEILER & CRAIG SURVEYING INC.  
52-1/2 NORTH MAIN STREET  
MANSFIELD, OHIO 44902  
(419) 525-3644  
FAX (419) 525-3696

SURVEY PLAT FOR	
PROPERTY TRANSFER	
PART LOT #88 VILLAGE OF BUTLER RICHLAND COUNTY, OHIO	
DATE: APRIL 28, 2010	SCALE: 1"=20'
GRANTST57	

**SEILER & CRAIG SURVEYING, INC.**

*Douglas C. Seiler, PS & Chad F. Craig, PS*

*52 1/2 North Main Street*

*Mansfield, Ohio 44902*

*419-525-3644 Fax: 419-525-3696*

*www.seilerandcraig.com*

**SURVEY DESCRIPTION**

PART LOT #88  
VILLAGE OF BUTLER  
RICHLAND COUNTY, OHIO

Situated in the Village of Butler, County of Richland, State of Ohio and being known as part of Lot 88 in said village, and being more particularly described as follows:

Beginning for the same at a point marking the northeast corner of Lot #88 referenced by an iron pin set on a bearing of South 00 degrees 21 minutes 19 seconds West and at a distance of 0.50 feet, Thence South 00 degrees 21 minutes 19 seconds West with the east line of said lot and passing through said pin set, a total distance of 18.00 feet to an iron pin set;

Thence, North 89 degrees 38 minutes 41 seconds West a distance of 118.86 feet to an iron pin set on the west line of said lot;

Thence, North 07 degrees 32 minutes 18 seconds East with said west line a distance of 18.14 feet to a point referenced by an iron pin set on a bearing of South 89 degrees 38 minutes 41 seconds East and at a distance of 5.40 feet;

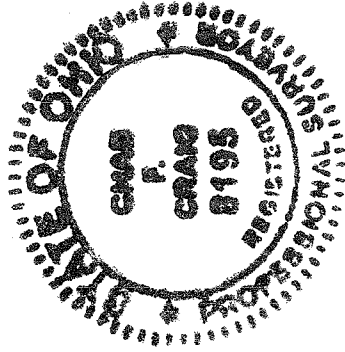
Thence, South 89 degrees 38 minutes 41 seconds East passing through said pin set, a total distance of 116.59 feet to the place of beginning, containing 2119 square feet of according to survey by Chad F. Craig P.S. #8195 for Seiler and Craig Surveying, Inc. on April 28, 2010, but subject to all easements of record and right of ways of record.

Iron pins set are 5/8" rods with caps stamped "CRAIG 8195".

Bearings are based on survey Q-44 on file at the Richland County Tax Map Office and are intended to be used for angular determination only.

NEW SURVEY  
OF EXISTING PARCEL  
RICHLAND COUNTY  
TAX MAP OFFICE

INITIAL EAK  
DATE 5-6-10  
BB-98



*Chad F. Craig*

Chad F. Craig P.S. #8195  
for Seiler and Craig Surveying, Inc.