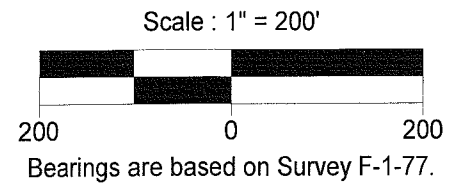
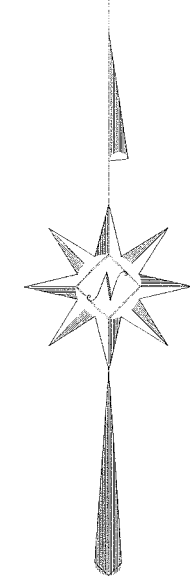
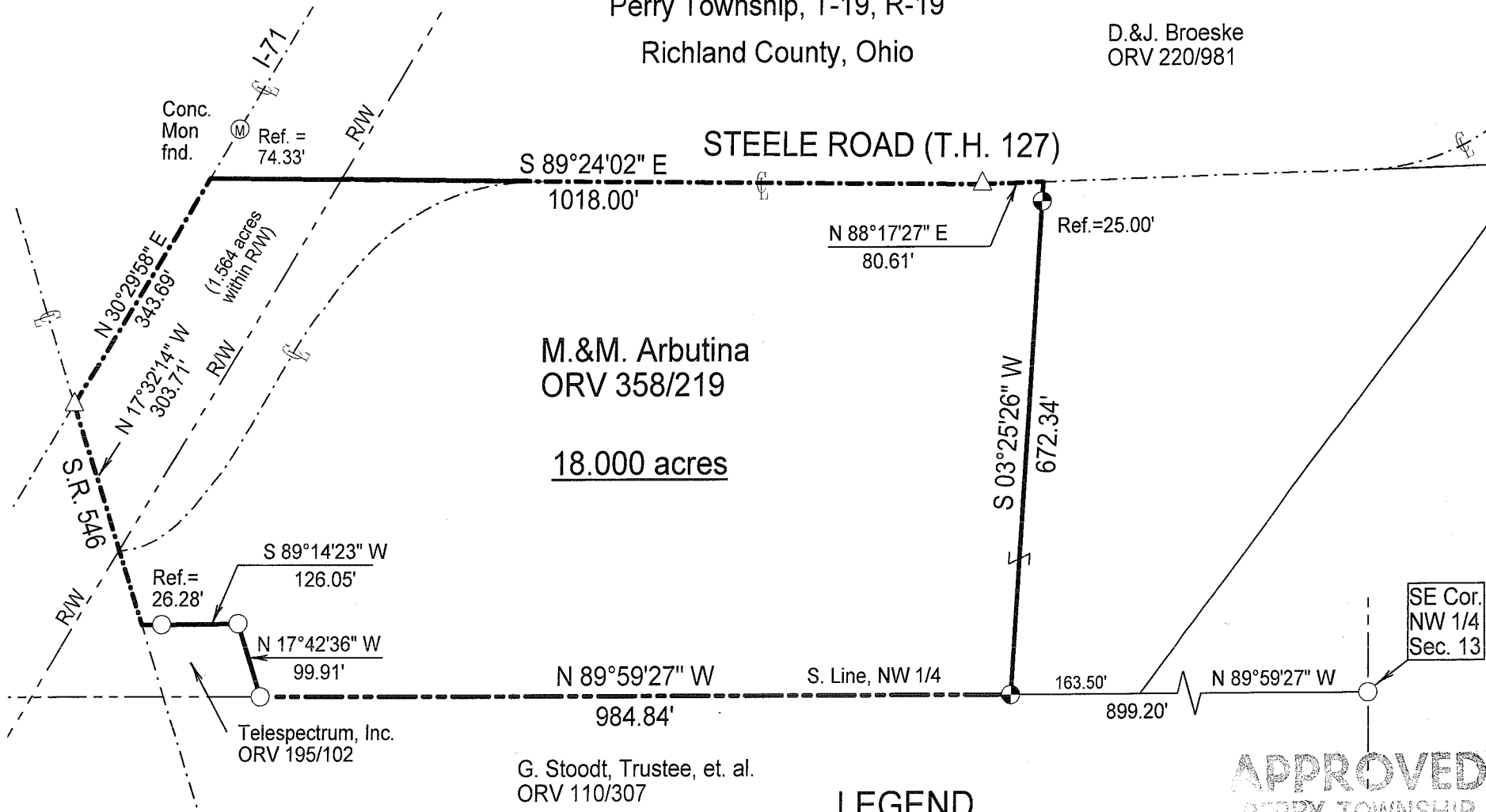


SURVEY PLAT

Part Northwest Quarter - Section 13
 Perry Township, T-19, R-19
 Richland County, Ohio

D.&J. Broeske
 ORV 220/981



Warne R. Clancy
 Warne R. Clancy P.S. #7178

LEGEND

- ⊕ Iron pin set with cap stamped "CLANCY 7178"
- Iron pin found
- △ Railroad spike found

APPROVED
 PERRY TOWNSHIP
 ZONING INSPECTOR

NEW SPLIT
 RICHLAND COUNTY
 TAX MAP OFFICE
 EAK 11-3-09
 INITIAL DATE
 AA-366

DATE: 11/18/09
 JOB NO.: W102609

SURVEY DESCRIPTION

**Part Northwest Quarter – Section 13
Perry Township, T-19, R-19
Richland County, Ohio**

Situated in the Township of Perry, County of Richland, State of Ohio, and being a part of the Northwest Quarter of Section 13 of Township 19 of Range 19, more particularly described as follows:

Commencing for the same at an iron pin found marking the southeast corner of said northwest quarter; Thence, North 89 degrees 59 minutes 27 seconds West with the south line of said quarter, a distance of 899.20 feet to an iron pin set thereon, the Place of Beginning;

Thence, continuing with said south line North 89 degrees 59 minutes 27 seconds West, a distance of 984.84 feet to an iron pin found marking the southeast corner of a parcel owned by Telespectrum, Inc. (ORV 195/102);

Thence, North 17 degrees 42 minutes 36 seconds West, a distance of 99.91 feet to an iron pin found marking the northeast corner of said parcel;

Thence, South 89 degrees 14 minutes 23 seconds West with the north line of said parcel, passing an iron pin found for reference at 99.77 feet, a distance of 126.05 feet to a point on the centerline of State Route 546;

Thence, North 17 degrees 32 minutes 14 seconds West with said centerline, a distance of 303.71 feet to a Railroad spike found marking its intersection with the centerline of Interstate 71;

Thence, North 30 degrees 29 minutes 58 seconds East with said centerline, a distance of 343.69 feet to a point thereon, referenced by a Concrete Monument found North 30 degrees 29 minutes 58 seconds East, a distance of 74.33 feet;

Thence, South 89 degrees 24 minutes 02 seconds East, a distance of 1018.00 feet to a Railroad spike found on the centerline of Steele Road (T.H. 127);

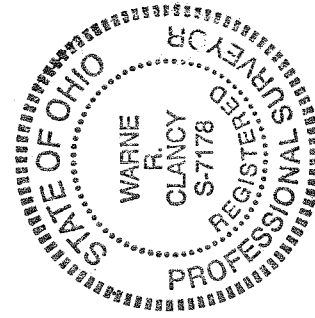
Thence, North 88 degrees 17 minutes 27 seconds East with said centerline, a distance of 80.61 feet to a point thereon;

Thence, South 03 degrees 25 minutes 26 seconds West, passing an iron pin set for reference at 25.00 feet, a distance of 672.34 feet to the Place of Beginning, containing 18.000 acres, of which 1.564 acres lie within the said Interstate right-of-way, according to survey by Warne R. Clancy, Professional Surveyor #7178, on October 26, 2009.

Iron pins set are #5 rebars with caps stamped "CLANCY 7178".

Bearings are based on Survey F-1-77.

NEW SPLIT
RICHLAND COUNTY
TAX MAP OFFICE
FAX 12-3-09
INITIAL DATE
AA-366



Warne R. Clancy
Warne R. Clancy

P.S. 7178