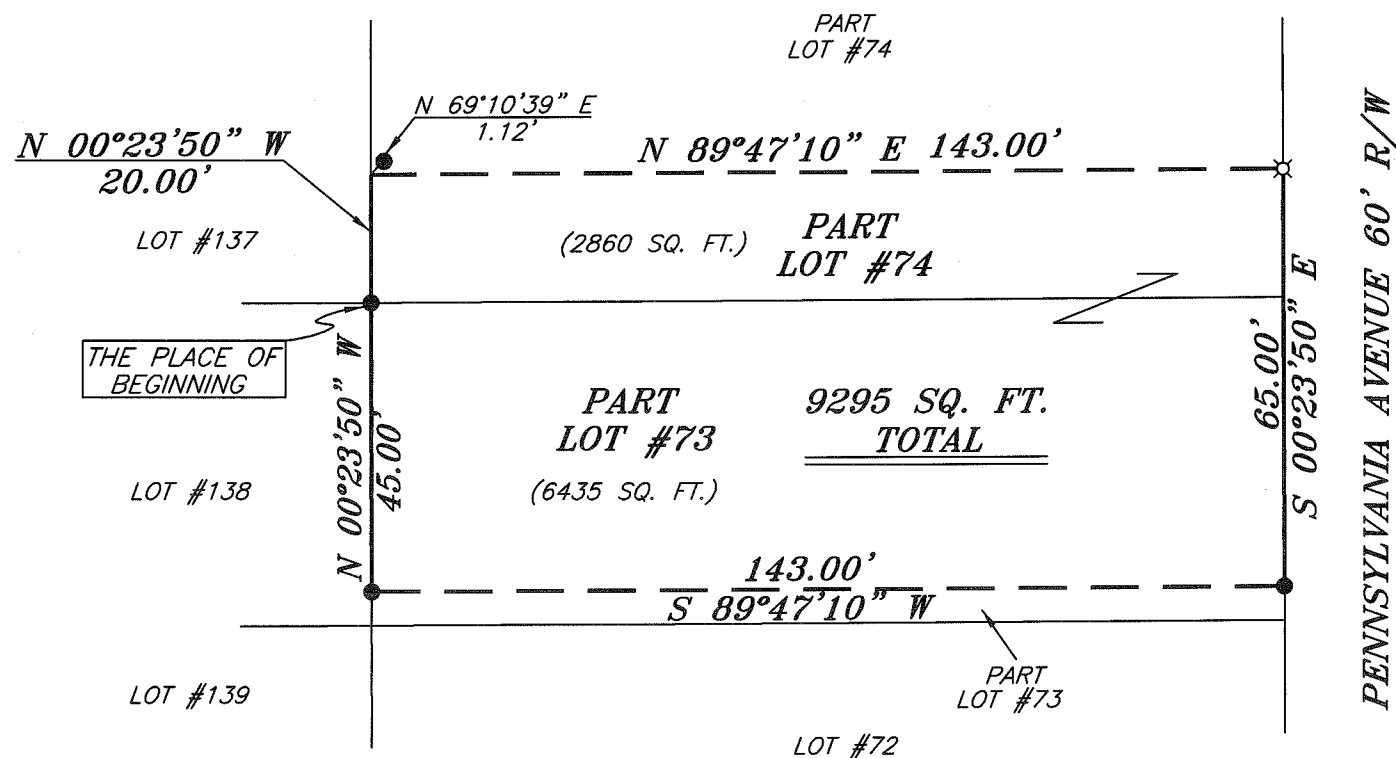
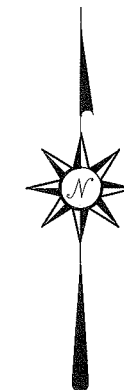


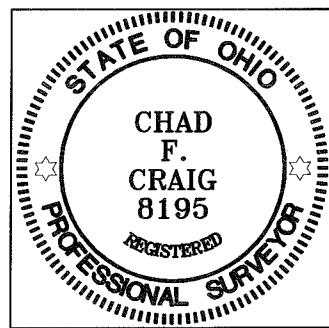
NORTH



LEGEND

- IRON PIN FOUND
- ⊕ MAG NAIL SPIKE SET
- ▲ RAILROAD SPIKE FOUND
- ⊗ 5/8" IRON PIN SET WITH CAP STAMPED "CRAIG 8195"

NEW SURVEY
 OF EXISTING PARCEL
 RICHLAND COUNTY.
 TAX MAP OFFICE
 EAK 119-09
 INITIAL DATE
 AA-351



BEARINGS ARE BASED ON AN ASSUMED
 MERIDIAN AND ARE INTENDED TO BE
 USED FOR ANGULAR DETERMINATION ONLY

Chad F. Craig
 SURVEY BY: CHAD F. CRAIG P.S. #8195
 for SEILER & CRAIG SURVEYING INC.
 52-1/2 NORTH MAIN STREET
 MANSFIELD, OHIO 44902
 (419) 525-3644
 FAX (419) 525-3696

SURVEY PLAT FOR	
REYNOLDS	
PT. LOTS #73 & #74, LINCOLN HGHTS. ALLOT. MADISON TOWNSHIP RICHLAND COUNTY, OHIO	
DATE: NOVEMBER 6, 2009	SCALE: 1"=30'
501PENN	

SEILER & CRAIG SURVEYING, INC.

Douglas C. Seiler, PS & Chad F. Craig, PS

52 1/2 North Main Street

Mansfield, Ohio 44902

419-525-3644 Fax: 419-525-3696

www.seilerandcraig.com

SURVEY DESCRIPTION

PART LOTS #73 & #74
LINCOLN HEIGHTS NO. 1,
MADISON TOWNSHIP ALLOTMENTS
RICHLAND COUNTY, OHIO

Situated in the Township of Madison, County of Richland, State of Ohio and being known as part Lots #73 and #74 of the consecutively numbered lots in Lincoln Heights No. 1, and being more particularly described as follows:

Beginning for the same at an iron pin found and accepted as marking the southwest corner of Lot #74; Thence, North 00 degrees 23 minutes 50 seconds West with the west line of said lot, a distance of 20.00 feet to a point referenced by an iron pin found on a bearing of North 69 degrees 10 minutes 39 seconds East and at a distance of 1.12 feet;

Thence, North 89 degree 47 minutes 10 seconds East a distance of 143.00 feet to an iron pin set on the east line of said lot;

Thence, South 00 degrees 23 minutes 50 seconds East with said east line and the southerly prolongation thereof, a distance of 65.00 feet to an iron pin found;

Thence, South 89 degrees 47 minutes 10 seconds West a distance of 143.00 feet to an iron pin found on the west line of Lot #73;

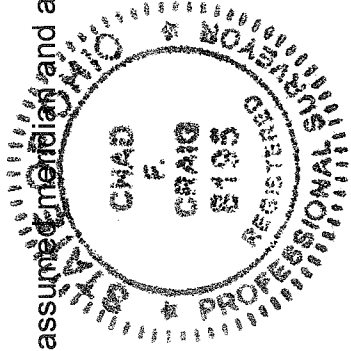
Thence, North 00 degrees 23 minutes 50 seconds West with said west line, a distance of 45.00 feet to the place of beginning, containing 9295 square feet of which 6435 square feet are located in Part Lot #73, and 2860 square feet are located in Part Lot #74, according to survey by Chad F. Craig P.S. #8195 for Seiler and Craig Surveying, Inc. on November 6, 2009

Iron pins set are 5/8" rods with caps stamped "CRAIG 8195".

Bearings are based on an assumed meridian and are intended to be used for angular determination only.

NEW SURVEY
OF EXISTING PARCEL
RICHLAND COUNTY
TAX MAP OFFICE

ERK 119-09
INITIAL DATE
AA-351



Chad F. Craig

Chad F. Craig P.S. #8195
for Seiler and Craig Surveying, Inc.