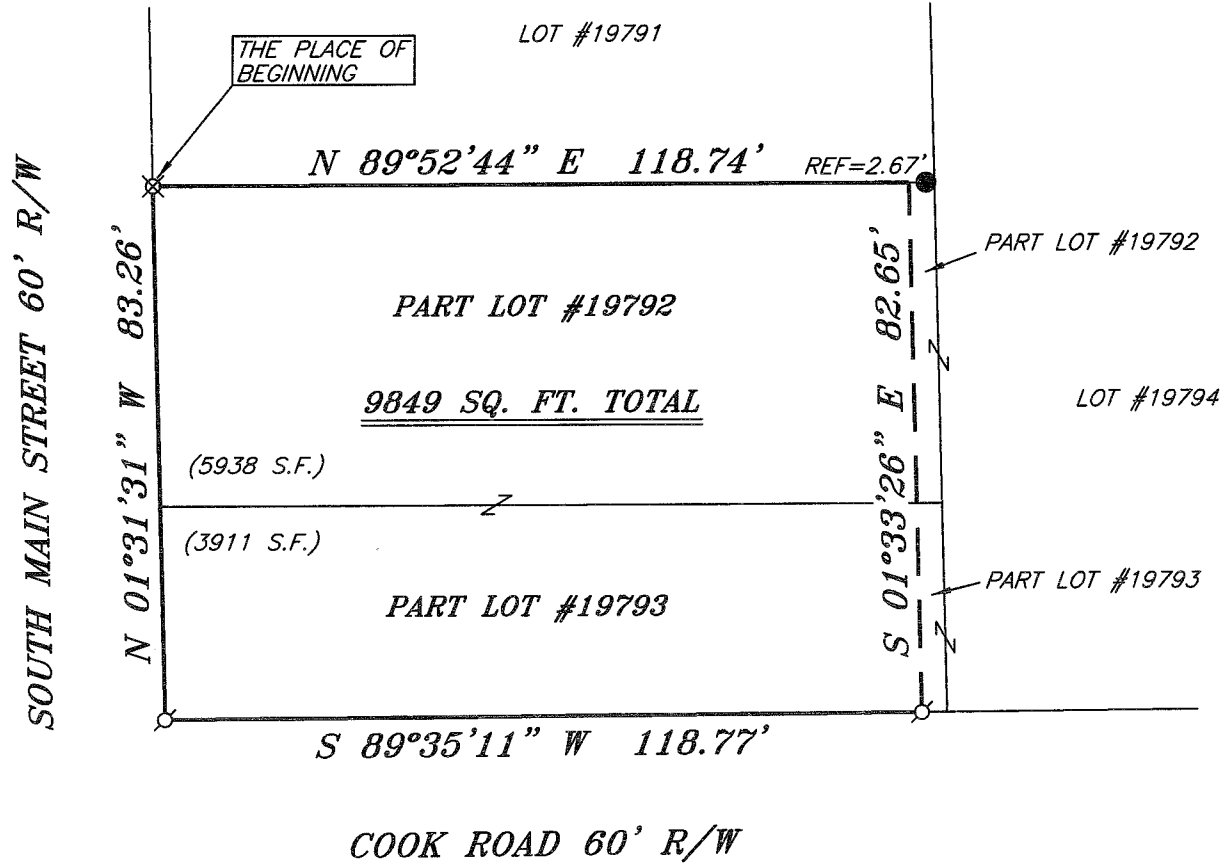


BEARINGS ARE BASED ON SURVEY 0-215 ON FILE AT THE RICHLAND COUNTY TAX MAP OFFICE AND ARE INTENDED TO BE USED FOR ANGULAR DETERMINATION ONLY

NORTH



LEGEND

- IRON PIN FOUND
- ⊘ 2" MAG NAIL SPIKE SET
- △ RAILROAD SPIKE SET
- ▲ RAILROAD SPIKE FOUND
- ⊗ 5/8" IRON PIN SET WITH CAP STAMPED "CRAIG 8195"

Chad F. Craig
 SURVEY BY: CHAD F. CRAIG P.S. #8195
 for SEILER & CRAIG SURVEYING INC.
 52-1/2 NORTH MAIN STREET
 MANSFIELD, OHIO 44902
 (419) 525-3644
 FAX (419) 525-3696

NEW SURVEY
 OF EXISTING PARCEL
 RICHLAND COUNTY
 TAX MAP OFFICE
 EAK 9-21-09
 INITIAL DATE
 AA-308

SURVEY PLAT FOR	
PROPERTY TRANSFER	
PART LOT #19792 & PART LOT #19793 CITY OF MANSFIELD RICHLAND COUNTY, OHIO	
DATE: SEPT. 11, 2009	SCALE: 1"=30'
919SMAINST	

SEILER & CRAIG SURVEYING, INC.

Douglas C. Seiler, PS & Chad F. Craig, PS

52 1/2 North Main Street

Mansfield, Ohio 44902

419-525-3644 Fax: 419-525-3696

www.seilerandcraig.com

SURVEY DESCRIPTION

PART LOT #19792 & PART LOT #19793
CITY OF MANSFIELD,
RICHLAND COUNTY, OHIO

Situated in the City of Mansfield, County of Richland, State of Ohio and being known as Part Lot #19792 and Part Lot #19793 of the consecutively numbered lots in said city, and being more particularly described as follows:

Beginning for the same at an iron pin set at the northwest corner of Lot #19792, Thence, North 89 degrees 52 minutes 44 seconds East with the north line of said lot a distance of 118.74 feet to a point referenced by an iron pin found on a bearing of North 89 degrees 52 minutes 44 seconds East and at a distance of 2.67 feet;

Thence, South 01 degree 33 minutes 26 seconds East a distance of 82.65 feet to a 2 inch Mag Nail spike set on the south line of Lot #19793;

Thence, South 89 degrees 35 minutes 11 seconds West with said south line a distance of 118.77 feet to a 2 inch Mag Nail spike set at the southwest corner thereof;

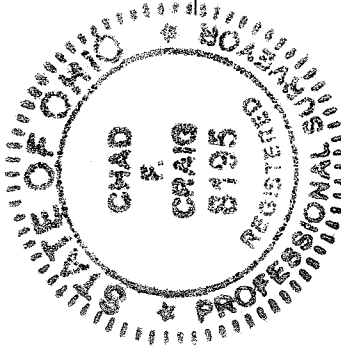
Thence, North 01 degree 31 minutes 31 seconds West a distance of 83.26 feet to the place of beginning, containing 9849 square feet of which 5938 square feet are in part Lot #19792 and 3911 square feet are in part Lot #19793 according to survey by Chad F. Craig P.S. #8195 for Seiler and Craig Surveying, Inc. on September 11, 2009.

Iron pins set are 5/8" rods with caps stamped "CRAIG 8195".

Bearings are based on survey O-215 on file at the Richland County Tax Map Office and are intended to be used for angular determination only.

NEW SURVEY
OF EXISTING PARCEL
RICHLAND COUNTY
TAX MAP OFFICE

EA 9-21-09
INITIAL DATE
AA-308



Chad F. Craig

Chad F. Craig P.S. #8195
for Seiler and Craig Surveying, Inc.