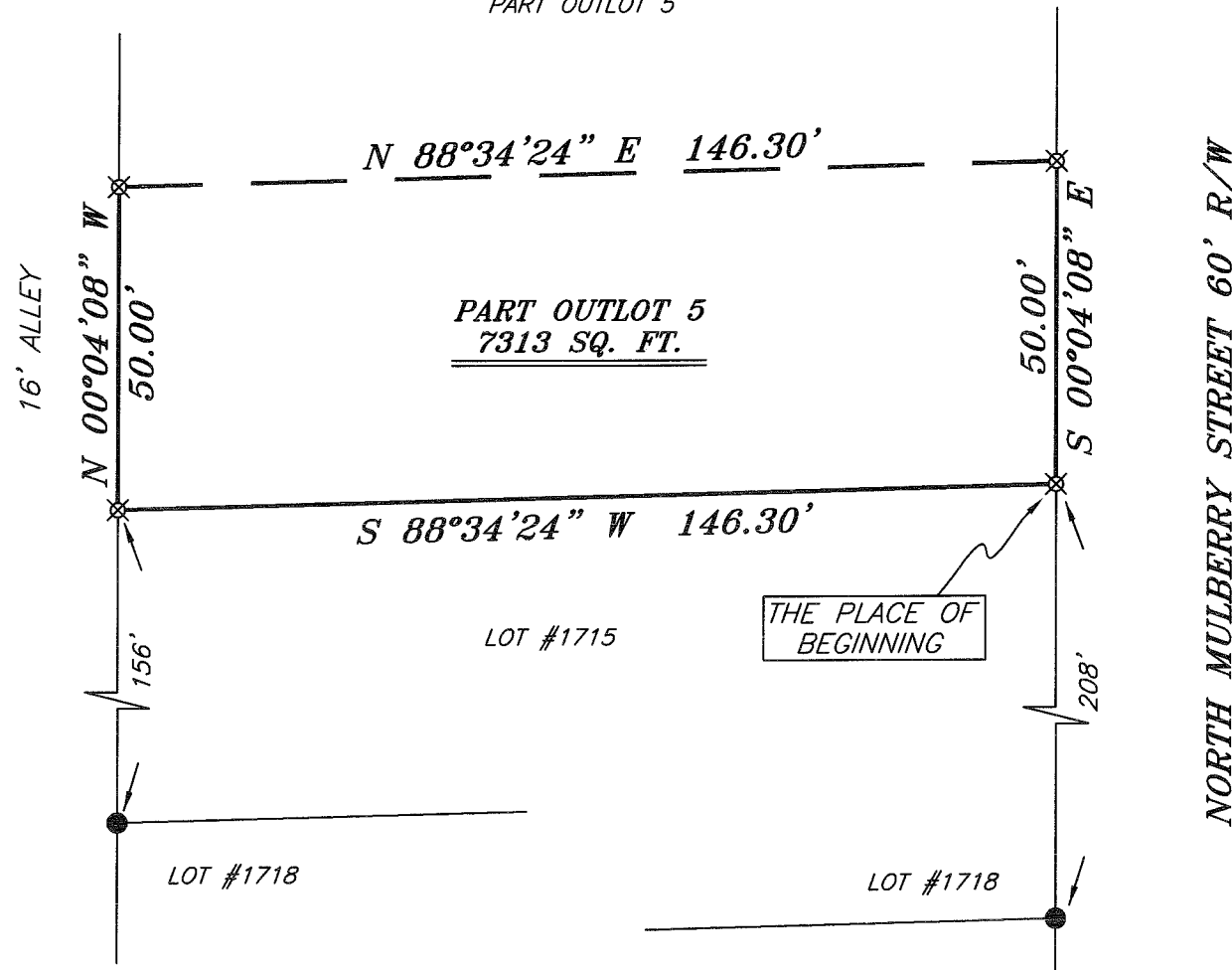


NORTH



BEARINGS ARE BASED ON AN ASSUMED MERIDIAN AND ARE INTENDED TO BE USED FOR ANGULAR DETERMINATION ONLY

PART OUTLOT 5



LEGEND

- IRON PIN FOUND
- ⊘ 2" MAG NAIL SPIKE SET
- △ RAILROAD SPIKE SET
- ▲ RAILROAD SPIKE FOUND
- ⊗ 5/8" IRON PIN SET WITH CAP STAMPED "CRAIG 8195"



Chad F. Craig

SURVEY BY: CHAD F. CRAIG P.S. #8195
 for SEILER & CRAIG SURVEYING, INC.
 52-1/2 NORTH MAIN STREET
 MANSFIELD, OHIO 44902
 (419) 525-3644
 FAX (419) 525-3696

NEW SURVEY
 OF EXISTING PARCEL
 RICHLAND COUNTY
 TAX MAP OFFICE

EAK 9-14-09
 INITIAL DATE

AA-304

SURVEY PLAT FOR	
PROPERTY TRANSFER	
PART OUTLOT 5 CITY OF MANSFIELD RICHLAND COUNTY, OHIO	
DATE: SEPT. 9, 2009	SCALE: 1"=30'
559MULBERRY	

SEILER & CRAIG SURVEYING, INC.

Douglas C. Seiler, PS & Chad F. Craig, PS

52 1/2 North Main Street
Mansfield, Ohio 44902
419-525-3644 Fax: 419-525-3696
www.seilerandcraig.com

SURVEY DESCRIPTION

PART OF OUTLOT #5
CITY OF MANSFIELD
RICHLAND COUNTY, OHIO

Situated in the City of Mansfield, County of Richland, State of Ohio and being known as a part of Outlot #5 and being more particularly described as follows:

Beginning for the same at an iron pin set marking the southeast corner of said outlot, Thence, South 88 degrees 34 minutes 24 seconds West a distance of 146.30 feet to an iron pin set;

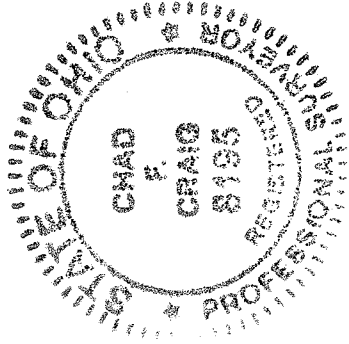
Thence, North 00 degrees 04 minutes 08 seconds West a distance of 50.00 feet to an iron pin set;

Thence, North 88 degrees 34 minutes 24 seconds East a distance of 146.30 feet to an iron pin set;

Thence, South 00 degrees 04 minutes 08 seconds East a distance of 50.00 feet to the place of beginning, containing 7313 square feet, according to survey by Chad F. Craig Professional Surveyor #8195 for Seiler & Craig Surveying, Inc. on September 9, 2009.

Iron pins set are 5/8" rods with caps stamped "CRAIG 8195"

Bearings are based on an assumed meridian and are intended to be used for angular determination only.



Chad F. Craig
Chad F. Craig P.S. #8195
for Seiler & Craig Surveying, Inc.

NEW SURVEY
OF EXISTING PARCEL
RICHLAND COUNTY
TAX MAP OFFICE

EAJ 9-14-09
INITIAL DATE

AA-304