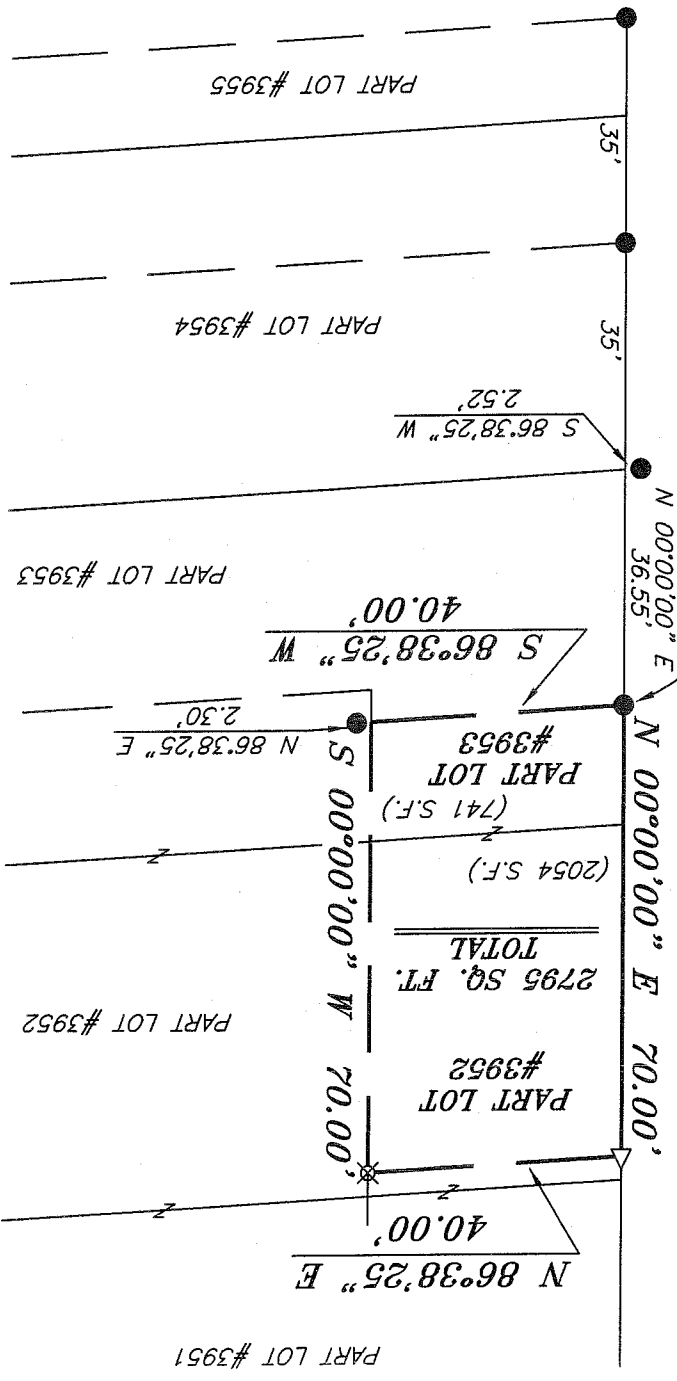
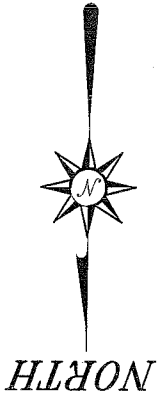


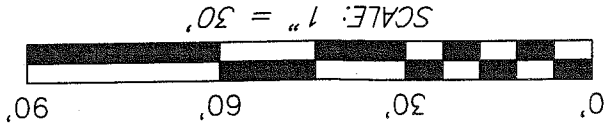
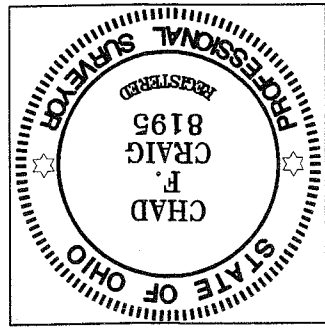
385HENRY
 DATE: JULY 13, 2009 SCALE: 1"=30
 RICHLAND COUNTY, OHIO
 CITY OF MANSFIELD
 PART LOT #3952 & PART LOT #3953
 TAYLOR
 SURVEY PLAT FOR

- LEGEND**
- IRON PIN FOUND
 - ⊗ 2" MAG NAIL SPIKE SET
 - ▽ RAILROAD SPIKE SET
 - ▲ RAILROAD SPIKE FOUND
 - ⊗ 5/8" IRON PIN SET WITH CAP
- STAMPED "SEILER AND CRAIG, INC."

BEARINGS ARE BASED ON SURVEY L-360 ON FILE AT THE RICHLAND COUNTY TAX MAP OFFICE AND ARE INTENDED TO BE USED FOR ANGULAR DETERMINATION ONLY



NEW SURVEY
 OF EXISTING PARCEL
 RICHLAND COUNTY
 TAX MAP OFFICE
 JUL 15 2009
 INITIAL DATE



Chad F. Craig
 SURVEY BY: CHAD F. CRAIG P.S. #8195
 for SEILER & CRAIG SURVEYING INC.
 52-1/2 NORTH MAIN STREET
 MANSFIELD, OHIO 44902
 (419) 525-3644
 FAX (419) 525-3696

AA-239

SEILER & CRAIG SURVEYING, INC.

Douglas C. Seiler, PS & Chad F. Craig, PS
52 1/2 North Main Street
Mansfield, Ohio 44902
419-525-3644 Fax 419-525-3696
www.seilerandcraig.com

SURVEY DESCRIPTION

PART LOT #3952 AND
PART LOT #3953
CITY OF MANSFIELD,
RICHLAND COUNTY, OHIO

Situated in the City of Mansfield, County of Richland, State of Ohio and being known as part of Lot #3952 and part of Lot #3953 of the consecutively numbered lots in said city, and being more particularly described as follows:

Commencing at the southwest corner of Lot #3953, said corner referenced by an iron pin found on a bearing of South 86 degrees 38 minutes 25 seconds West and at a distance of 2.52 feet; Thence, North 00 degrees 00 minutes 00 seconds East with the west line of said lot, a distance of 36.55 feet to an iron pin found, the place of beginning of the parcel herein described;

Thence, continuing North 00 degrees 00 minutes 00 seconds East with said west line and the northerly prolongation thereof, a distance of 70.00 feet to a railroad spike set on the west line of Lot #3952;

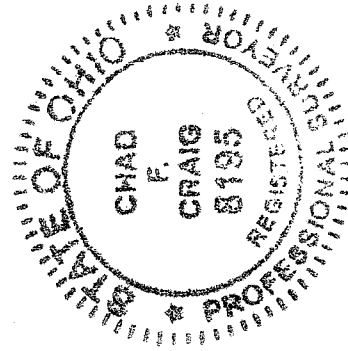
Thence North 86 degrees 38 minutes 25 seconds East a distance of 40.00 feet to an iron pin set;

Thence, South 00 degrees 00 minutes 00 seconds West a distance of 70.00 feet to a point, said point referenced by an iron pin found for reference on a bearing of North 86 degrees 38 minutes 25 seconds East and at a distance of 2.30 feet;

Thence, South 86 degrees 38 minutes 25 seconds West a distance of 40.00 feet to the place of beginning, containing a total of 2795 square feet of which 2054 square feet are located within Part Lot #3952 and 741 square feet are located within Part Lot #3953 according to survey by Chad F. Craig P.S. #8195 for Seiler and Craig Surveying, Inc. on July 13, 2009.

Iron pins set are 5/8" rods with caps stamped "SEILER AND CRAIG, INC".

Bearings are based on survey L-360 on file at the Richland County Tax Map Office and are intended to be used for angular determination only.



Chad F. Craig

Chad F. Craig P.S. #8195

for Seiler and Craig Surveying, Inc.

NEW SURVEY
OF EXISTING PARCEL
RICHLAND COUNTY
TAX MAP OFFICE

INITIAL DATE
EAC 7-15-09