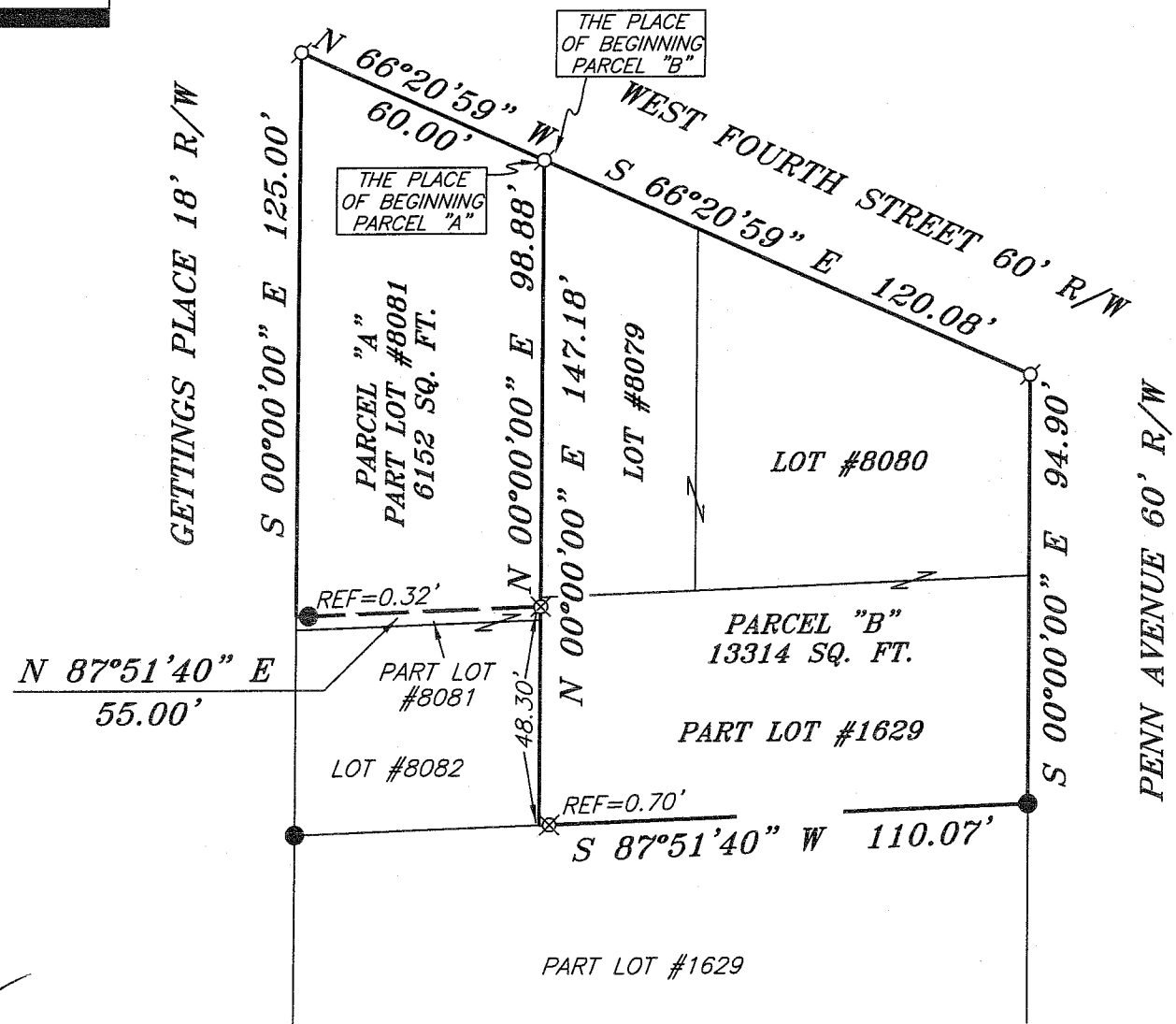


NORTH



BEARINGS ARE BASED ON AN ASSUMED MERIDIAN AND ARE INTENDED TO BE USED FOR ANGULAR DETERMINATION ONLY



LEGEND

- IRON PIN FOUND
- ⊗ 2" MAG NAIL SPIKE SET
- △ RAILROAD SPIKE SET
- ▲ RAILROAD SPIKE FOUND
- ⊗ 5/8" IRON PIN SET WITH CAP STAMPED "SEILER AND CRAIG, INC."



Chad F. Craig

SURVEY BY: CHAD F. CRAIG P.S. #8195
 for SEILER & CRAIG SURVEYING INC.
 52-1/2 NORTH MAIN STREET
 MANSFIELD, OHIO 44902
 (419) 525-3644
 FAX (419) 525-3696

SURVEY PLAT FOR	
WINNICK	
LOT #8079, LOT #8080, PART LOT #8081 & PART LOT #1629, CITY OF MANSFIELD RICHLAND COUNTY, OHIO	
DATE: JUNE 26, 2009	SCALE: 1"=40'
WINNICK2009	

NEW SURVEY
 OF EXISTING PARCEL
 RICHLAND COUNTY
 TAX MAP OFFICE
 EAK 7-9-09
 INITIAL DATE

AA-234

SEILER & CRAIG SURVEYING, INC.

Douglas C. Seiler, PS & Chad F. Craig, PS

52 1/2 North Main Street

Mansfield, Ohio 44902

419-525-3644 Fax: 419-525-3696

www.seilerandcraig.com

SURVEY DESCRIPTION

PARCEL "A"

PART OF LOT #8081
CITY OF MANSFIELD
RICHLAND COUNTY, OHIO

Situated in the City of Mansfield, County of Richland, State of Ohio and being a part of Lot #8081 of the consecutively numbered lots in said city and being more particularly described as follows:

Beginning for the same at a 2 inch Mag Nail spike set the northeast corner of Lot #8081 of the consecutively numbered lots in said city; Thence, North 66 degrees 20 minutes 59 seconds West with the north line of said lot, a distance of 60.00 feet to a 2 inch Mag Nail spike set on the northwest corner thereof;

Thence, South 00 degrees 00 minutes 00 seconds East with the west line of said lot a distance of 125.00 feet to a point, said point referenced by an iron pin found on a bearing of North 87 degrees 51 minutes 40 seconds East and at a distance of 0.32 feet;

Thence, North 87 degrees 51 minutes 40 seconds East, passing through said reference pin, a distance of 55.00 feet to an iron pin set on the east line of said lot;

Thence, North 00 degrees 00 minutes 00 seconds East with said east line, a distance of 98.88 feet to the place of beginning, containing 6152 square feet according to survey by Chad F. Craig P.S. #8195 for Seiler & Craig Surveying, Inc. on June 26, 2009.

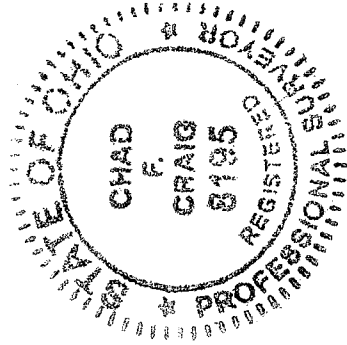
Iron pins set are 5/8" rods with caps stamped "SEILER AND CRAIG INC".

Bearings are based on an assumed meridian and are intended to be used for angular determination only.

NEW SURVEY
OF EXISTING PARCEL
RICHLAND COUNTY
TAX MAP OFFICE

EAJ
INITIAL

7-9-09
DATE



Chad F. Craig

Chad F. Craig P.S. #8195

for Seiler & Craig Surveying, Inc.

AA-234

SEILER & CRAIG SURVEYING, INC.

Douglas C. Seiler, PS & Chad F. Craig, PS

52 1/2 North Main Street

Mansfield, Ohio 44902

419-525-3644 Fax: 419-525-3696

www.seilerandcraig.com

SURVEY DESCRIPTION

PARCEL "B"

LOTS #8079, #8080, & PART LOT #1629
CITY OF MANSFIELD
RICHLAND COUNTY, OHIO

Situated in the City of Mansfield, County of Richland, State of Ohio and being Lots #8079, #8080, & Part Lot #1629 of the consecutively numbered lots in said city and being more particularly described as follows:

Beginning for the same at a 2 inch Mag Nail spike set and accepted as marking the northwest corner of Lot #8079 of the consecutively numbered lots in said city; Thence, South 66 degrees 20 minutes 59 seconds East with the north line of Lot #8079 and the easterly prolongation thereof, a distance of 120.08 feet to a 2 inch Mag Nail spike set on the northeast corner of Lot #8080;

Thence, South 00 degrees 00 minutes 00 seconds East with the east line of said lot and the southerly prolongation thereof, a distance of 94.90 feet to an iron pin found, said iron pin marking a point on the east line of Lot #1629;

Thence, South 87 degrees 51 minutes 40 seconds West passing through an iron pin set for reference at a distance of 109.37 feet, a total distance of 110.07 feet to a point, said point marking the southeast corner of Lot #8082;

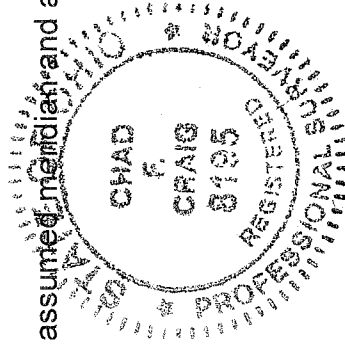
Thence, North 00 degrees 00 minutes 00 seconds East with the east line of said lot and the northerly prolongation thereof, passing through an iron pin set at a distance of 48.30 feet, a total distance of 147.18 feet to the place of beginning, containing 13,314 square feet according to survey by Chad F. Craig P.S. #8195 for Seiler & Craig Surveying, Inc. on June 26, 2009.

Iron pins set are 5/8" rods with caps stamped "SEILER AND CRAIG INC".

Bearings are based on an assumed meridian and are intended to be used for angular determination only.

NEW SURVEY
OF EXISTING PARCEL
RICHLAND COUNTY,
TAX MAP OFFICE

EAK 7-9-09
INITIAL DATE



Chad F. Craig

Chad F. Craig P.S.#8195

for Seiler & Craig Surveying, Inc.

AA-234