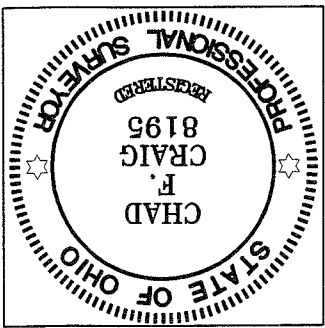


180CROUSE.DWG
 DATE: MAY 28, 2009 SCALE: 1"=20'
 RICHLAND COUNTY, OHIO
 CITY OF MANSFIELD
 PART LOT #1554
 PROPERTY TRANSFER
 SURVEY PLAT FOR

- LEGEND**
- IRON PIN FOUND
 - ◊ MAG NAIL SPIKE SET
 - ▼ RAILROAD SPIKE FOUND
 - ⊗ 5/8" IRON PIN SET WITH CAP STAMPED "SEILER AND CRAIG, INC."

SURVEY BY: CHAD F. CRAIG P.S. #6869
 for SEILER & CRAIG SURVEYING INC.
 52-1/2 NORTH MAIN STREET
 MANSFIELD, OHIO 44902
 (419) 525-3644
 FAX (419) 525-3696

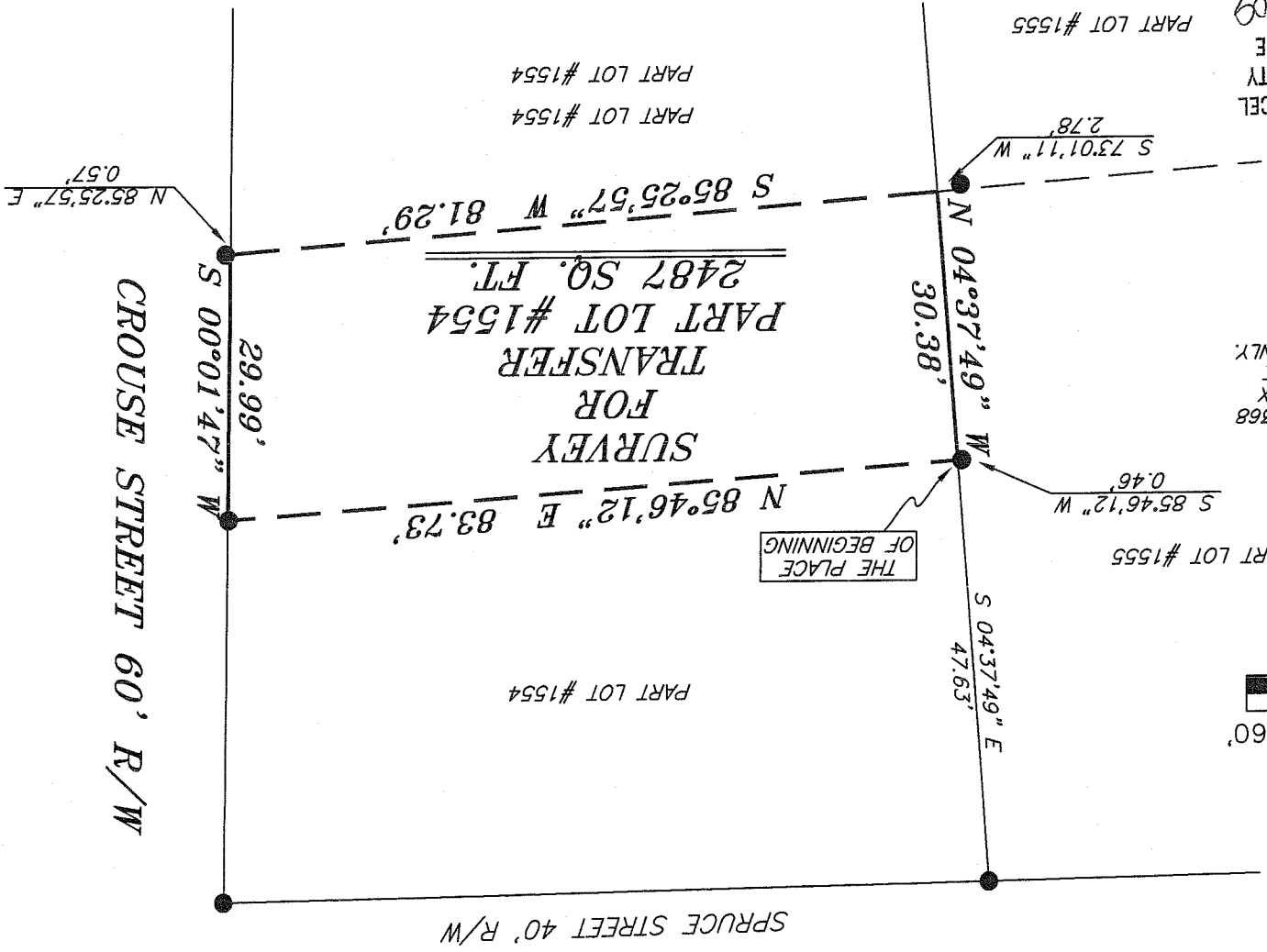
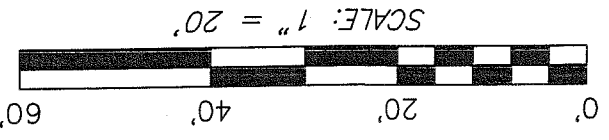
Chad F. Craig



INITIAL	DATE
MB	6-4-09

TAX MAP OFFICE
 RICHLAND COUNTY

BEARINGS ARE BASED ON SURVEY M-368
 ON FILE AT THE RICHLAND COUNTY TAX
 MAP OFFICE AND ARE INTENDED TO BE
 USED FOR ANGULAR DETERMINATION ONLY.



SEILER & CRAIG SURVEYING, INC.

Douglas C. Seiler, PS & Chad F. Craig, PS

52 1/2 North Main Street

Mansfield, Ohio 44902

419-525-3644 Fax: 419-525-3696

www.seilerandcraig.com

SURVEY DESCRIPTION

PART LOT #1554
CITY OF MANSFIELD,
RICHLAND COUNTY, OHIO

Situated in the City of Mansfield, County of Richland, State of Ohio and being known as part Lot #1554 of the consecutively numbered lots in said city, and being more particularly described as follows:

Commencing at an iron pin found and accepted as marking the northwest corner of said lot; Thence, South 04 degrees 37 minutes 49 seconds East with the west line of said lot, a distance of 47.63 feet to a point, said point being referenced by an iron pin found on a bearing of South 85 degrees 46 minutes 12 seconds West and at a distance of 0.46 feet, said point being the place of beginning of the parcel herein described;

Thence, North 85 degrees 46 minutes 12 seconds East a distance of 83.73 feet to an iron pin found on the east line of said lot;

Thence, South 00 degrees 01 minute 47 seconds West with said east line, a distance of 29.99 feet to a point, said point being referenced by an iron pin found on a bearing of North 85 degrees 25 minutes 57 seconds East and at a distance of 0.57 feet;

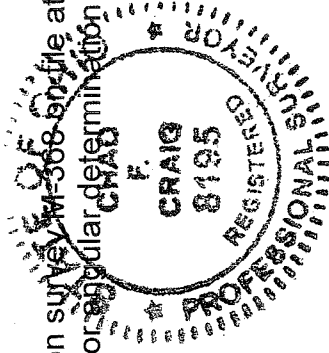
Thence, South 85 degrees 25 minutes 57 seconds West a distance of 81.29 feet to a point on the west line of said lot, said point referenced by an iron pin found on a bearing of South 73 degrees 01 minute 11 seconds West and at a distance of 2.78 feet;

Thence, North 04 degrees 37 minutes 49 seconds West with said west line, a distance of 30.38 feet to the place of beginning, containing 2,487 square feet according to survey by Chad F. Craig P.S. #8195 for Seiler and Craig Surveying, Inc. on May 28, 2009.

Iron pins set are 5/8" rods with caps stamped "SEILER AND CRAIG, INC".

Bearings are based on survey ~~MI-368~~ on file at the Richland County Tax Map Office and are intended to be used for ~~any~~ ^{regular} determination only.

NEW SURVEY
OF EXISTING PARCEL
RICHLAND COUNTY
TAX MAP OFFICE
mlb INITIAL
6-4-09 DATE



Chad F. Craig

Chad F. Craig P.S. #8195

for Seiler and Craig Surveying, Inc.