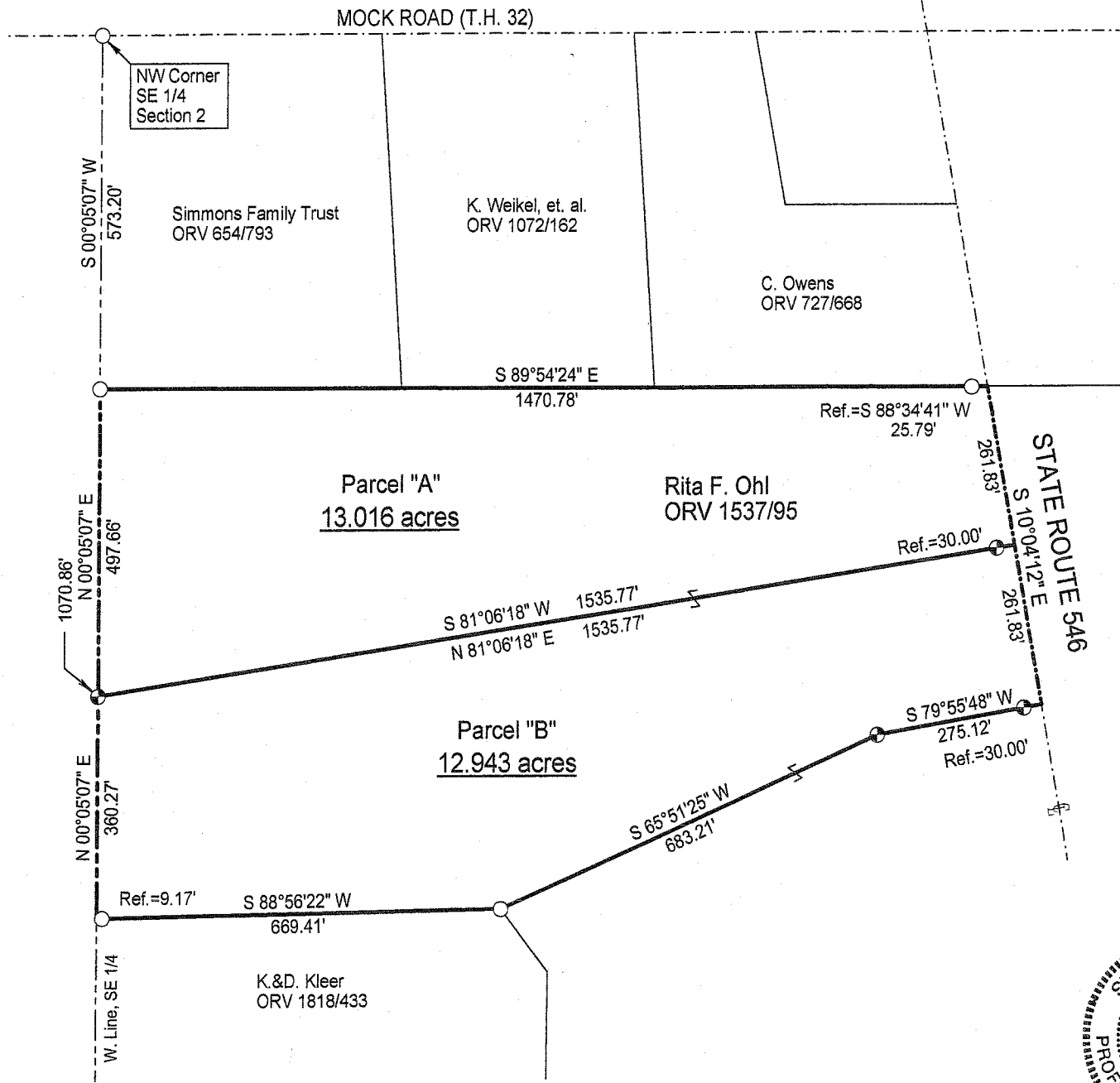


SURVEY PLAT

Part Southeast Quarter - Section 2
 Perry Township, T-19, R-19
 Richland County, Ohio



Scale : 1" = 200'

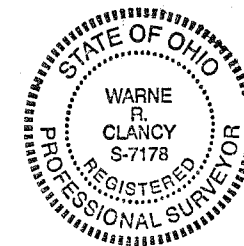


Bearings are based on Survey Z-67.

NEW SPLIT
 RICHLAND COUNTY
 TAX MAP OFFICE
 MLB 5-14-09
 INITIAL DATE

LEGEND

- ⊙ Iron pin set with cap stamped "CLANCY 7178"
- Iron pin found



Warne R. Clancy
 Warne R. Clancy P.S. #7178

DATE: 5/1/09
 JOB NO.: W041309

AA-193

SURVEY DESCRIPTION

**Part Southeast Quarter – Section 2
Perry Township, T-19, R-19
Richland County, Ohio**

Situated in the Township of Perry, County of Richland, State of Ohio, and being a part of the Southeast Quarter of Section 2 of Township 19 of Range 19, more particularly described as follows:

Commencing for the same at an iron pin found marking the northwest corner of said southeast quarter; Thence, South 00 degrees 05 minutes 07 seconds West with the west line of said quarter, a distance of 573.20 feet to an iron pin found marking the southwest corner of a parcel owned by the Simmons Family Trust (ORV 654/793), the Place of Beginning;

Thence, South 89 degrees 54 minutes 24 seconds East with the south line of said parcel and easterly projection thereof, a distance of 1470.78 feet to a point on the centerline of State Route 546, as referenced by an iron pin found South 88 degrees 34 minutes 41 seconds West, a distance of 25.79 feet;

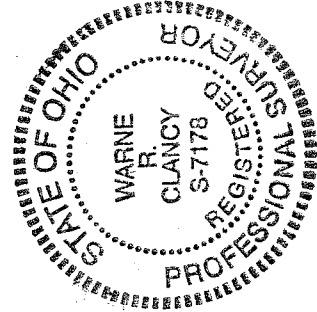
Thence, South 10 degrees 04 minutes 12 seconds East with said centerline, a distance of 261.83 feet to a point thereon;

Thence, South 81 degrees 06 minutes 18 seconds West, passing an iron pin set for reference at 30.00 feet, a distance of 1535.77 feet to an iron pin set on the said west quarter section line;

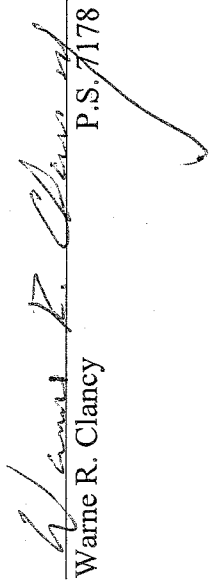
Thence, North 00 degrees 05 minutes 07 seconds East with said west line, a distance of 497.66 feet to the Place of Beginning, containing 13.016 acres according to survey by Warne R. Clancy, Professional Surveyor #7178, on April 13, 2009.

Iron pins set are #5 rebars with caps stamped "CLANCY 7178".

Bearings are based on Survey Z-67.



Parcel "A" – 13.016 ac.


Warne R. Clancy
P.S. 7178

NEW SPLIT
RICHLAND COUNTY
TAX MAP OFFICE
MLB 5/14/09
INITIAL DATE

PA 143

SURVEY DESCRIPTION

Part Southeast Quarter – Section 2
Perry Township, T-19, R-19
Richland County, Ohio

Situated in the Township of Perry, County of Richland, State of Ohio, and being a part of the Southeast Quarter of Section 2 of Township 19 of Range 19, more particularly described as follows:

Commencing for the same at an iron pin found marking the northwest corner of said southeast quarter; Thence, South 00 degrees 05 minutes 07 seconds West with the west line of said quarter, a distance of 1070.86 feet to an iron set thereon, the Place of Beginning;

Thence, North 81 degrees 06 minutes 18 seconds East, passing an iron pin set for reference at 1505.77 feet, a distance of 1535.77 feet to a point on the centerline of State Route 546;

Thence, South 10 degrees 04 minutes 12 seconds East with said centerline, a distance of 261.83 feet to a point thereon;

Thence, South 79 degrees 55 minutes 48 seconds West, passing an iron pin set for reference at 30.00 feet, a distance of 275.12 feet to an iron pin set;

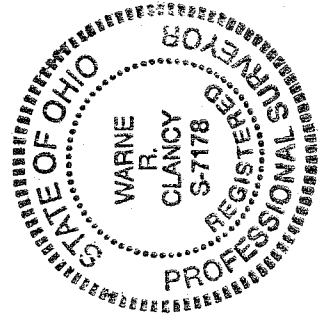
Thence, South 65 degrees 51 minutes 25 seconds West, a distance of 683.21 feet to an iron pin found marking the northeast corner of a parcel owned by K. & D. Kleer (ORV 1818/433);

Thence, South 88 degrees 56 minutes 22 seconds West with the north line of said parcel, passing an iron pin found for reference at 660.24 feet, a distance of 669.41 feet to a point on the said west quarter section line;

Thence, North 00 degrees 05 minutes 07 seconds East with said west line, a distance of 360.27 feet to the Place of Beginning, containing 12.943 acres according to survey by Warne R. Clancy, Professional Surveyor #7178, on April 13, 2009.

Iron pins set are #5 rebars with caps stamped "CLANCY 7178".

Bearings are based on Survey Z-67.



Parcel "B" – 12.943 ac.

Warne R. Clancy
Warne R. Clancy
P.S. 7178

NEW SPLIT
RICHLAND COUNTY,
TAX MAP OFFICE
M16 6/14/09
INITIAL DATE

AA113