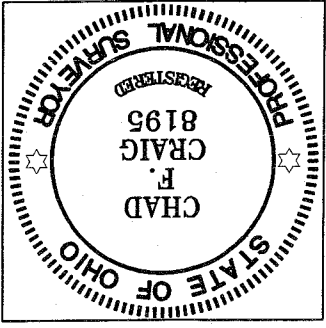


SURVEY BY: CHAD F. CRAIG P.S. #8195
 for SELLER & CRAIG SURVEYING INC.
 52-1/2 NORTH MAIN STREET
 MANSFIELD, OHIO 44902
 (419) 525-3644
 FAX (419) 525-3696

Chad F. Craig

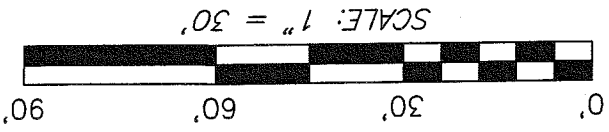


NEW SURVEY
 OF EXISTING PARCEL
 RICHLAND COUNTY
 TAX MAP OFFICE
 INITIAL *MLB*
 DATE *4-1-09*

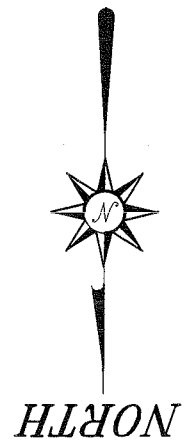
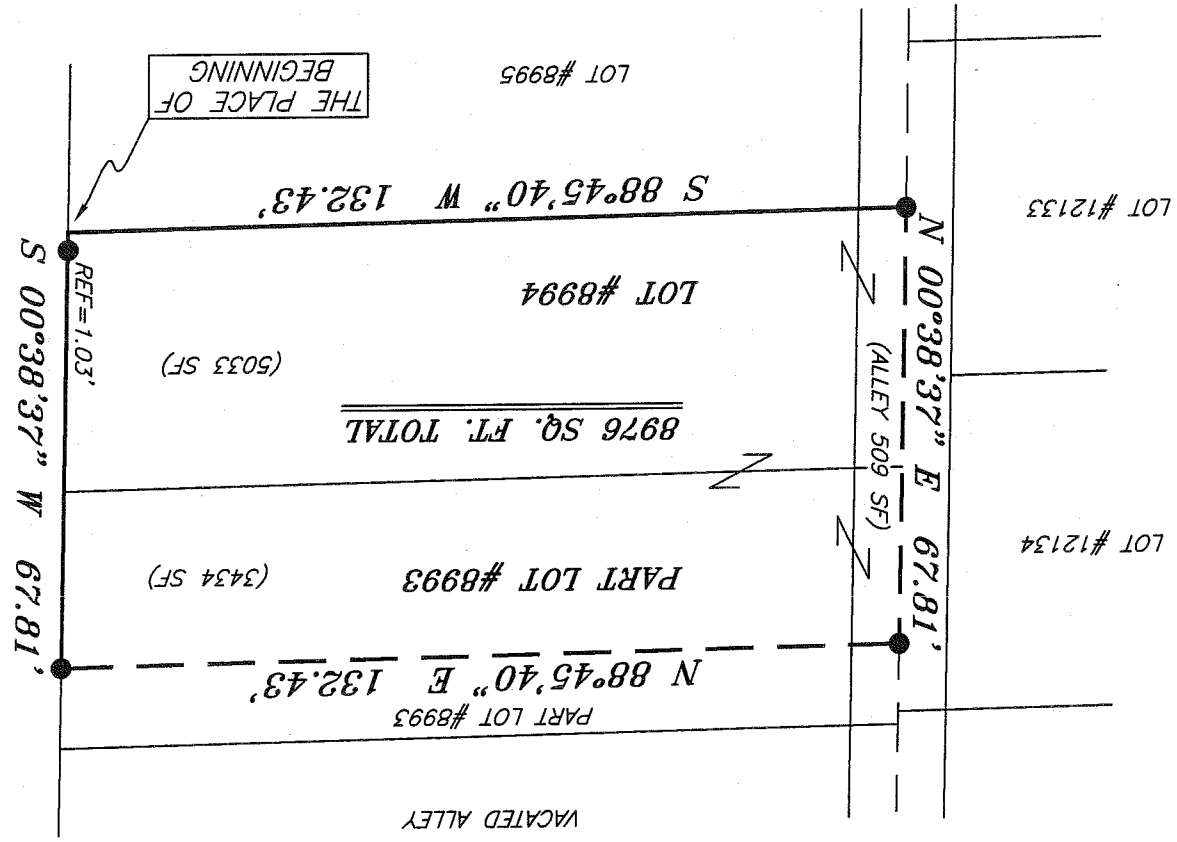
BEARINGS ARE BASED ON SURVEY I-197 ON FILE AT THE
 RICHLAND COUNTY TAX MAP OFFICE AND ARE INTENDED
 TO BE USED FOR ANGULAR DETERMINATION ONLY

SURVEY PLAT FOR
 PROPERTY TRANSFER
 PART LOT #8993, LOT #8994 & PART
 VACATED ALLEY, CITY OF MANSFIELD
 RICHLAND COUNTY, OHIO
 DATE: MARCH 31, 2009 SCALE: 1"=30'
 3722FAIRLAWN

- LEGEND**
- IRON PIN FOUND
 - 2" MAG NAIL SPIKE SET
 - △ RAILROAD SPIKE SET
 - ▼ RAILROAD SPIKE FOUND
 - ⊗ 5/8" IRON PIN SET WITH CAP
- STAMPED "SELLER AND CRAIG, INC."



FAIRLAWN AVENUE 80' R/W



ATA 164

SEILER & CRAIG SURVEYING, INC.

Douglas C. Seiler, PS & Chad F. Craig, PS

52 1/2 North Main Street

Mansfield, Ohio 44902

419-525-3644 Fax: 419-525-3696

www.seilerandcraig.com

SURVEY DESCRIPTION

PART LOT #8993, LOT # 8994
AND PART VACATED ALLEY
CITY OF MANSFIELD,
RICHLAND COUNTY, OHIO

Situated in the City of Mansfield, County of Richland, State of Ohio and being known as part of Lot #8993 and Lot #8994 the consecutively numbered lots in said city and part of a vacated alley, and being more particularly described as follows:

Beginning for the same at the southeast corner of Lot #8994, said corner referenced by an iron pin found on a bearing of North 00 degrees 38 minutes 37 seconds East and at a distance of 1.03 feet; Thence, South 88 degrees 45 minutes 40 seconds West with the south line of said lot, a distance of 132.43 feet to an iron pin found;

Thence, North 00 degrees 38 minutes 37 seconds East a distance of 67.81 feet to an iron pin found;

Thence, North 88 degrees 45 minutes 40 seconds East a distance of 132.43 feet to an iron pin found on the east line of Lot #8993;

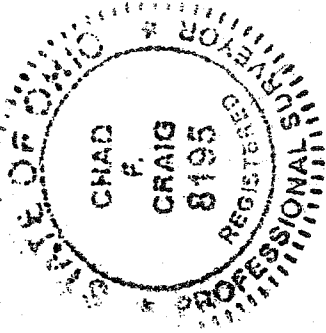
Thence, South 00 degrees 38 minutes 37 seconds West with said east line and the southerly prolongation thereof, a distance of 67.81 feet to the place of beginning, containing a total of 8,976 square feet of which 3434 square feet are located within part Lot #8993, 5033 square feet are located within Lot #8994 and 509 square feet are located within part of a vacated alley according to survey by Chad F. Craig P.S. #8195 for Seiler and Craig Surveying, Inc. on March 31, 2009.

Iron pins set are 5/8" rods with caps stamped "SEILER AND CRAIG, INC".

Bearings are based on survey I-197 on file at the Richland County Tax Map office and are intended to be used for angular determination only.

NEW SURVEY
OF EXISTING PARCEL
RICHLAND COUNTY
TAX MAP OFFICE

mlb INITIAL
4-1-09 DATE



Chad F. Craig

Chad F. Craig P.S. #8195

for Seiler and Craig Surveying, Inc.

AA1604