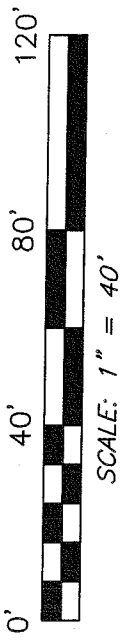
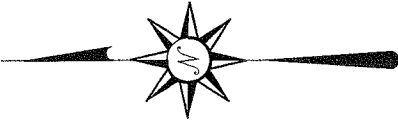
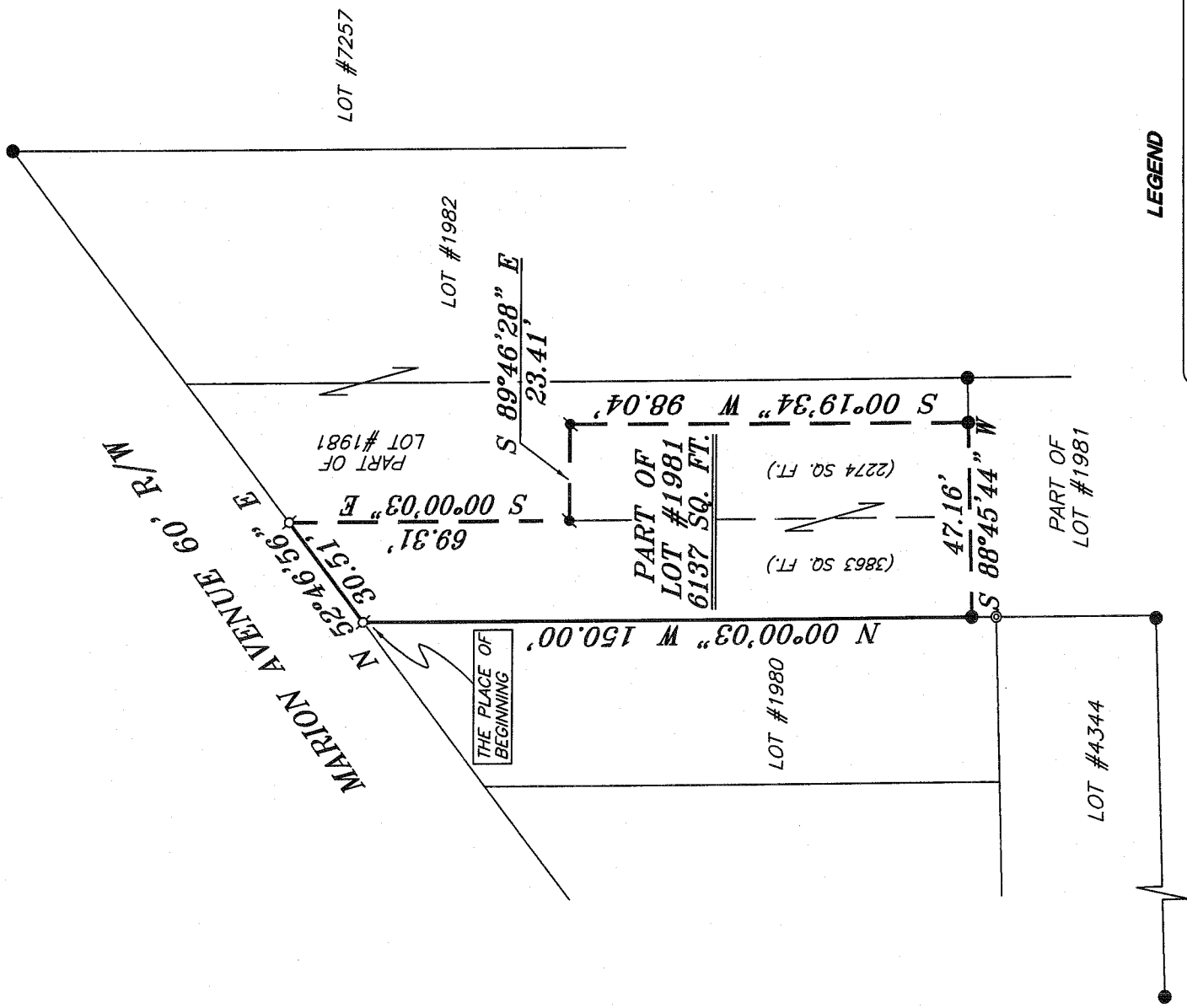


NOT TO SCALE



BEARINGS ARE BASED ON AN ASSUMED MERIDIAN AND ARE INTENDED TO BE USED FOR ANGULAR DETERMINATION ONLY.



LEGEND

- ⊙ DRILL HOLE, FOUND
- ⊕ 2" MAG NAIL SPIKE, SET
- IRON PIN FOUND
- ⊗ 2" MAG NAIL SPIKE, FOUND
- ⊗ 5/8" IRON PIN WITH CAP STAMPED "SEILER AND CRAIG INC."; SET

NEW SURVEY
OF EXISTING PARCEL
RICHLAND COUNTY
TAX MAP OFFICE

mb 32709
INITIAL DATE

Chad F. Pollock

SURVEY BY: CHAD F. CRAIG P.S. #8195
for SEILER & CRAIG SURVEYING INC.
52-1/2 NORTH MAIN STREET
MANSFIELD, OHIO 44902
(419) 525-3644
FAX (419) 525-3696

SURVEY PLAT FOR
JACK POLLOCK
PART OF LOT #1981
CITY OF MANSFIELD
RICHLAND COUNTY, OHIO
Date: MARCH 20, 2009
Scale: 1" = 40'
FOX2009.dwg

AA-161

SEILER & CRAIG SURVEYING, INC.

Douglas C. Seiler, PS & Chad F. Craig, PS

52 1/2 North Main Street

Mansfield, Ohio 44902

419-525-3644 Fax: 419-525-3696

www.seilerandcraig.com

SURVEY DESCRIPTION

PART OF LOT # 1981
CITY OF MANSFIELD,
RICHLAND COUNTY, OHIO

Situated in the City of Mansfield, County of Richland, State of Ohio and being known as Part of Lot #1981 of the consecutively numbered lots in said city and being more particularly described as follows:

Beginning for the same at a 2 inch Mag Nail spike set marking the northwest corner of Lot #1981, Thence, North 52 degrees 46 minutes 56 seconds East with the north line of said lot and the south right of way of Marion Avenue, a distance of 30.51 feet to a 2 inch Mag Nail spike set;

Thence, South 00 degree 00 minute 03 seconds East a distance of 69.31 feet to a 2 inch Mag Nail spike found;

Thence, South 89 degrees 46 minutes 28 seconds East a distance of 23.41 feet to a 2 inch Mag Nail spike found;

Thence, South 00 degree 19 minutes 34 seconds West a distance of 98.04 feet to an iron pin found;

Thence, South 88 degrees 45 minutes 44 seconds West a distance of 47.16 feet to an iron pin found, said iron pin marking a point on the west line of said lot;

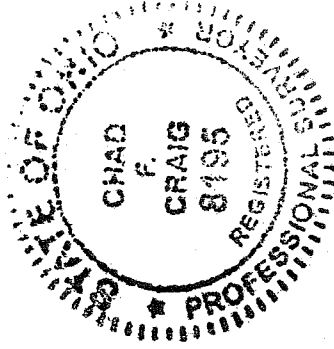
Thence, North 00 degree 00 minute 03 seconds West a distance of 150.00 feet to the place of beginning, containing 6137 square feet according to survey by Chad F. Craig Professional Surveyor #8195 for Seiler & Craig Surveying, Inc. on March 20, 2009.

Iron pins set are 5/8" rods with caps stamped "SEILER AND CRAIG, INC."

Bearings are based on an assumed meridian and are intended to be used for angular determination only.

NEW SURVEY
OF EXISTING PARCEL
RICHLAND COUNTY
TAX MAP OFFICE

INITIAL M/C DATE 3/20/09



Chad F. Craig

Chad F. Craig P.S. #8195
for Seiler & Craig Surveying, Inc.

AA-161