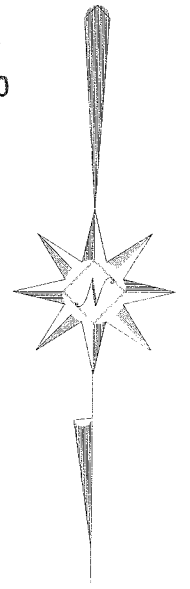
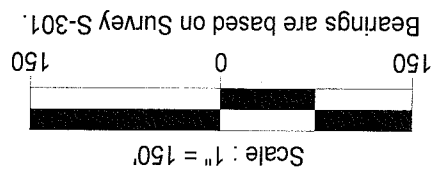
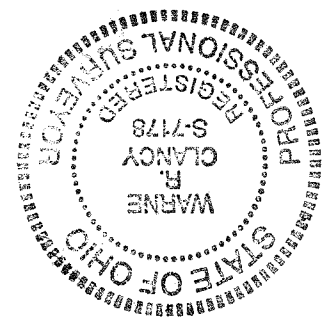
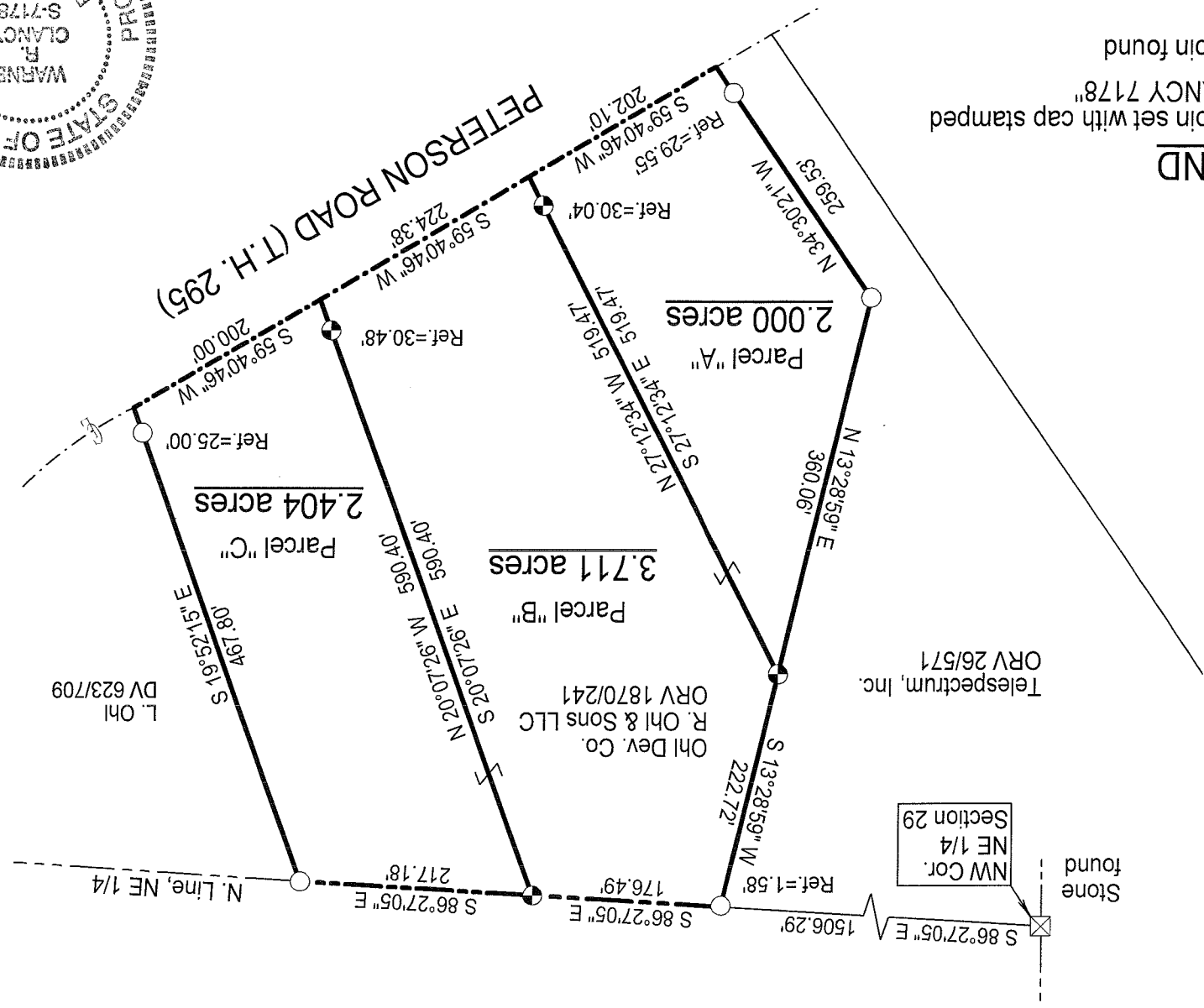


### LEGEND

- Iron pin set with cap stamped "CLANCY 7178"
- Iron pin found



Part Northeast Quarter - Section 29  
 Mifflin Township, T-23, R-17  
 Richland County, Ohio

## SURVEY PLAT

NEW SURVEY  
 RICHLAND COUNTY  
 TAX MAP OFFICE  
 MJB 3-24-09  
 INITIAL DATE

NEW SPLIT  
 RICHLAND COUNTY  
 TAX MAP OFFICE  
 MJB 3-24-09  
 INITIAL DATE

*Warne R. Clancy*  
 Warne R. Clancy  
 P.S. #7178  
 3/24/09  
 Mifflin Twp Taxing Insp.

SURVEY DESCRIPTION

**Part Northeast Quarter – Section 29  
Mifflin Township, T-23, R-17  
Richland County, Ohio**

Situated in the Township of Mifflin, County of Richland, State of Ohio, and being a part of the Northeast Quarter of Section 29 of Township 23 of Range 17, more particularly described as follows:

Commencing for the same at a stone found marking the northwest corner of said northeast quarter; Thence, South 86 degrees 27 minutes 05 seconds East with the north line of said quarter, a distance of 1506.29 feet to the northeast corner of a parcel owned by Telespectrum, Inc. (ORV 26/571); Thence, South 13 degrees 28 minutes 59 seconds West with the east line of said parcel, passing an iron pin found for reference at 1.58 feet, a distance of 222.72 to an iron pin set, the Place of Beginning;

Thence, South 27 degrees 12 minutes 34 East, passing an iron pin set for reference at 489.43 feet, a distance of 519.47 feet to a point on the centerline of Peterson Road (T.H. 295);

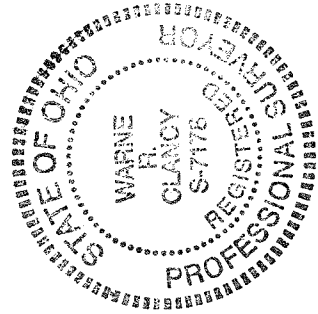
Thence, South 59 degrees 40 minutes 46 seconds West with said centerline, a distance of 202.10 feet to the southeast corner of the above referenced Telespectrum parcel;

Thence, North 34 degrees 30 minutes 21 seconds West with the east line of said parcel, passing an iron pin found for reference at 29.55 feet, a distance of 259.53 feet to an iron pin found thereon;

Thence, continuing with said east line North 13 degrees 28 minutes 59 seconds East, a distance of 360.06 feet to the Place of Beginning, containing 2.000 acres according to survey by Warne R. Clancy, Professional Surveyor #7178, on May 20, 2008.

Then iron pin set is a #5 rebar with a cap stamped "CLANCY 7178".

Bearings are based on Survey S-301.



NEW SPLIT  
RICHLAND COUNTY  
TAX MAP OFFICE  
MRC 3/24/09  
INITIAL DATE

Parcel "A" – 2.000 ac.

*Warne R. Clancy*  
Warne R. Clancy P.S. 7178

*Robert J. Jank* 3/24/09

**SURVEY DESCRIPTION**

**Part Northeast Quarter – Section 29  
Mifflin Township, T-23, R-17  
Richland County, Ohio**

Situated in the Township of Mifflin, County of Richland, State of Ohio, and being a part of the Northeast Quarter of Section 29 of Township 23 of Range 17, more particularly described as follows:

Commencing for the same at a stone found marking the northwest corner of said northeast quarter; Thence, South 86 degrees 27 minutes 05 seconds East with the north line of said quarter, a distance of 1506.29 feet to the northeast corner of a parcel owned by Telespectrum, Inc. (ORV 26/571), referenced by an iron pin found South 13 degrees 28 minutes 59 seconds West, a distance of 1.58 feet, the Place of Beginning;

Thence, continuing with said north line South 86 degrees 27 minutes 05 seconds East, a distance of 176.49 feet to an iron pin set thereon;

Thence, South 20 degrees 07 minutes 26 seconds East, passing an iron pin set for reference at 559.92 feet, a distance of 590.40 feet to a point on the centerline of Peterson Road (T.H. 295);

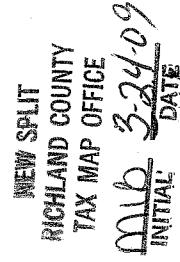
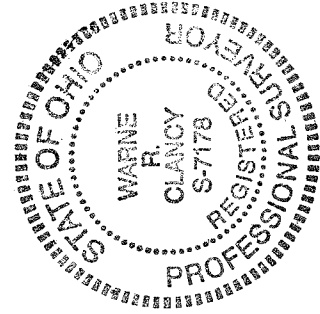
Thence, South 59 degrees 40 minutes 46 seconds West with said centerline, a distance of 224.38 feet to a point thereon;

Thence, North 27 degrees 12 minutes 34 seconds West, passing an iron pin set for reference at 30.04 feet, a distance of 519.47 feet to an iron pin set;

Thence, North 13 degrees 28 minutes 59 seconds East, a distance of 222.72 feet to the Place of Beginning, containing 3.711 acres according to survey by Warne R. Clancy, Professional Surveyor #7178, on November 24, 2008.

Then iron pin set is a #5 rebar with a cap stamped "CLANCY 7178".

Bearings are based on Survey S-301.



Parcel "B" – 3.711 ac.

*Warne R. Clancy*  
Warne R. Clancy P.S. 7178

*Robert J. Jankovich* 3/24/09

**SURVEY DESCRIPTION**

**Part Northeast Quarter – Section 29  
Mifflin Township, T-23, R-17  
Richland County, Ohio**

Situated in the Township of Mifflin, County of Richland, State of Ohio, and being a part of the Northeast Quarter of Section 29 of Township 23 of Range 17, more particularly described as follows:

Commencing for the same at a stone found marking the northwest corner of said northeast quarter; Thence, South 86 degrees 27 minutes 05 seconds East with the north line of said quarter, a distance of 1506.29 feet to the northeast corner of a parcel owned by Telespectrum, Inc. (ORV 26/571), referenced by an iron pin found South 13 degrees 28 minutes 59 seconds West, a distance of 1.58 feet, Thence, continuing with said north line South 86 degrees 27 minutes 05 seconds East, a distance of 217.18 feet to an iron pin set thereon, the Place of Beginning;

Thence, continuing with said north line South 86 degrees 27 minutes 05 seconds East, a distance of 217.18 feet to an iron pin found marking the northwest corner of a parcel owned by L. Ohl (DV 623/709);

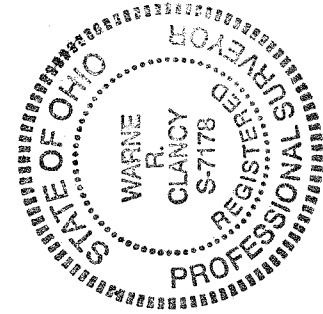
Thence, South 19 degrees 52 minutes 15 seconds East with the west line of said parcel, passing an iron pin set for reference at 442.80 feet, a distance of 467.80 feet to a point on the centerline of Peterson Road (T.H. 295);

Thence, South 59 degrees 40 minutes 46 seconds West with said centerline, a distance of 200.00 feet to a point thereon;

Thence, North 20 degrees 07 minutes 26 seconds West, passing an iron pin set for reference at 30.48 feet, a distance of 590.40 feet to the Place of Beginning, containing 2.404 acres according to survey by Warne R. Clancy, Professional Surveyor #7178, on November 24, 2008.

Then iron pin set is a #5 rebar with a cap stamped "CLANCY 7178".

Bearings are based on Survey S-301.



NEW SURVEY  
OF EXISTING PARCEL  
RICHLAND COUNTY  
TAX MAP OFFICE  
MWB 3/24/09  
INITIAL DATE

Parcel "C" – 2.404 ac.

*Warne R. Clancy*  
Warne R. Clancy P.S. 7178  
*Robert J. Gresh* 3/24/09