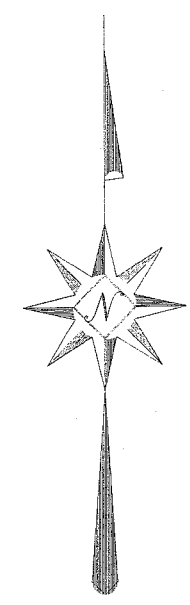
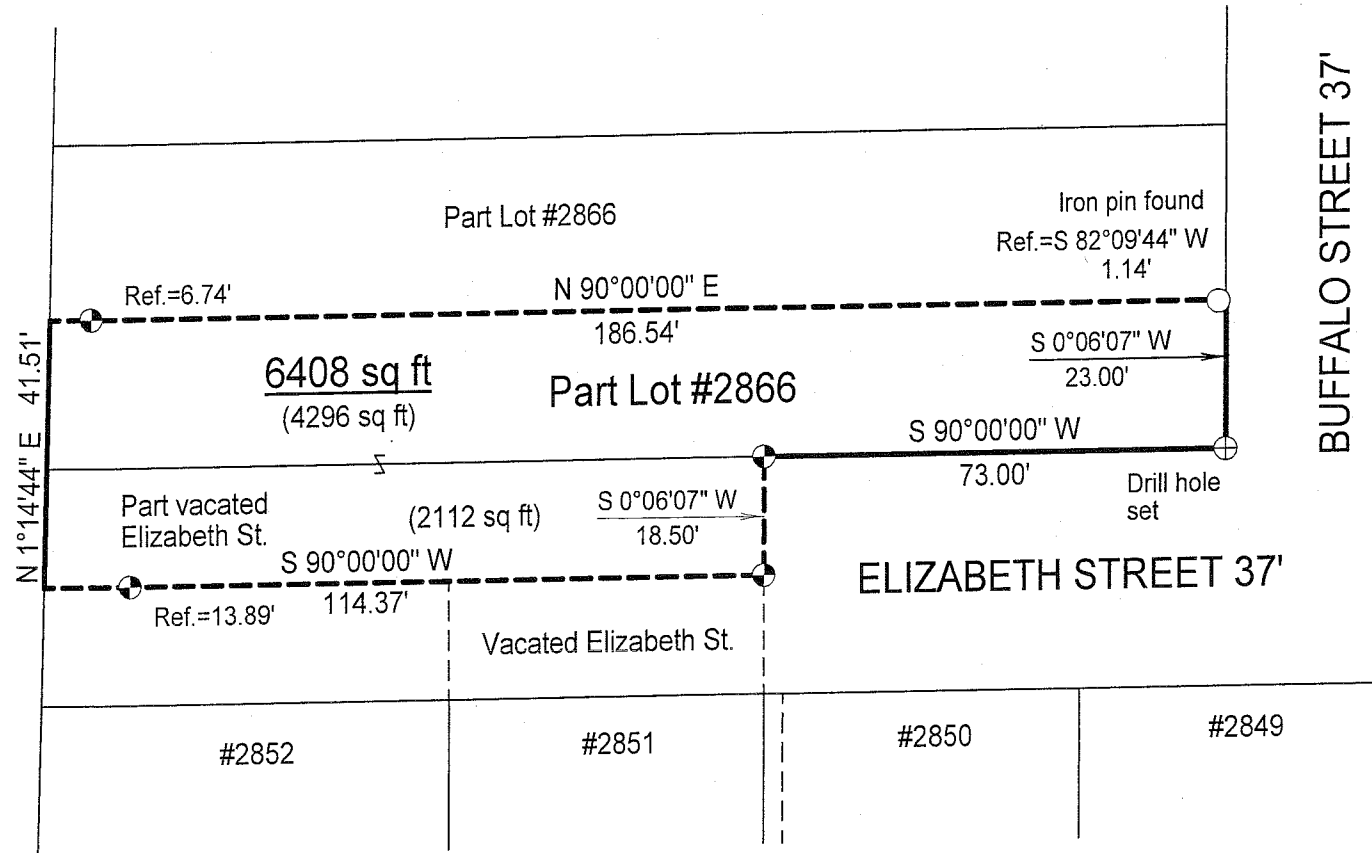


# SURVEY PLAT

Part Lot #2866 and Part vacated Elizabeth Street  
 City of Mansfield  
 Richland County, Ohio



Scale: 1" = 20'



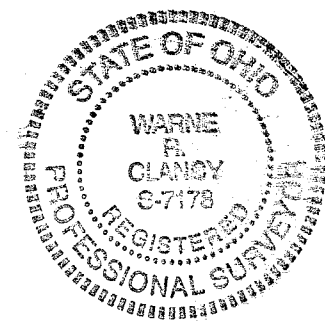
Bearings are based on Survey J-391.

## LEGEND

⊕ Iron pin set with cap stamped "CLANCY 7178"

NEW SURVEY  
 OF EXISTING PARCEL  
 RICHLAND COUNTY  
 TAX MAP OFFICE

MIB 11-13-08  
 INITIAL DATE



*Warne R. Clancy*  
 Warne R. Clancy P.S. #7178

DATE: 11/11/08  
 JOB NO.: W103008

AA-69

**SURVEY DESCRIPTION**

**Part Lot #2866 and Part vacated Elizabeth Street  
City of Mansfield  
Richland County, Ohio**

Situated in the City of Mansfield, County of Richland, State of Ohio, and being a part of Lot #2866 of the consecutively numbered lots of said City, and also being a part of vacated Elizabeth Street, more particularly described as follows:

Beginning for the same at a Drill hole set marking the southeast corner of said lot #2866, the same being the intersection of the west right-of-way line of Buffalo Street (37') with the north line of Elizabeth Street (37');

Thence, South 90 degrees 00 minutes 00 seconds West with said north right-of-way line, a distance of 73.00 feet to an iron pin set thereon;

Thence, South 00 degrees 06 minutes 07 seconds West, a distance of 18.50 feet to an iron pin set;

Thence, South 90 degrees 00 minutes 00 seconds West, passing an iron pin set for reference at 100.48 feet, a distance of 114.37 feet to a point on the west right-of-way line of Elizabeth Street;

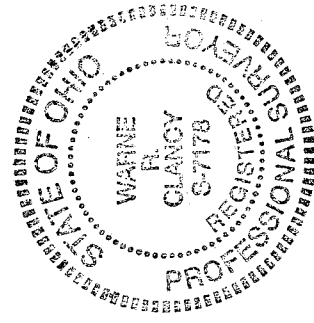
Thence, North 01 degrees 14 minutes 44 seconds East with said west line, a distance of 41.51 feet to a point on the west line of said lot #2866;

Thence, North 90 degrees 00 minutes 00 seconds East, a distance of 186.54 feet to a point on the said west Buffalo Street right-of-way line, referenced by an iron pin found South 82 degrees 09 minutes 44 seconds West, a distance of 1.14 feet;

Thence, South 00 degrees 06 minutes 07 seconds West with said right-of-way line, a distance of 23.00 feet to the Place of Beginning, containing 6,408 square feet, of which 4,296 lie in the said part of Lot #2866, and 2,112 in the said vacated part of Elizabeth Street according to survey by Warne R. Clancy, Professional Surveyor #7178, on October 30, 2008.

Iron pins set are #5 rebars with caps stamped "CLANCY 7178".

Bearings are based on Survey J-391.



NEW SURVEY  
OF EXISTING PARCEL  
RICHLAND COUNTY  
TAX MAP OFFICE

MLB  
INITIAL

11-13-08  
DATE

*Warne R. Clancy*  
Warne R. Clancy  
P.S. 7178

4444