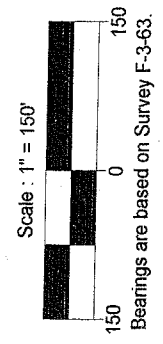
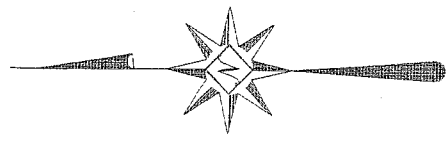
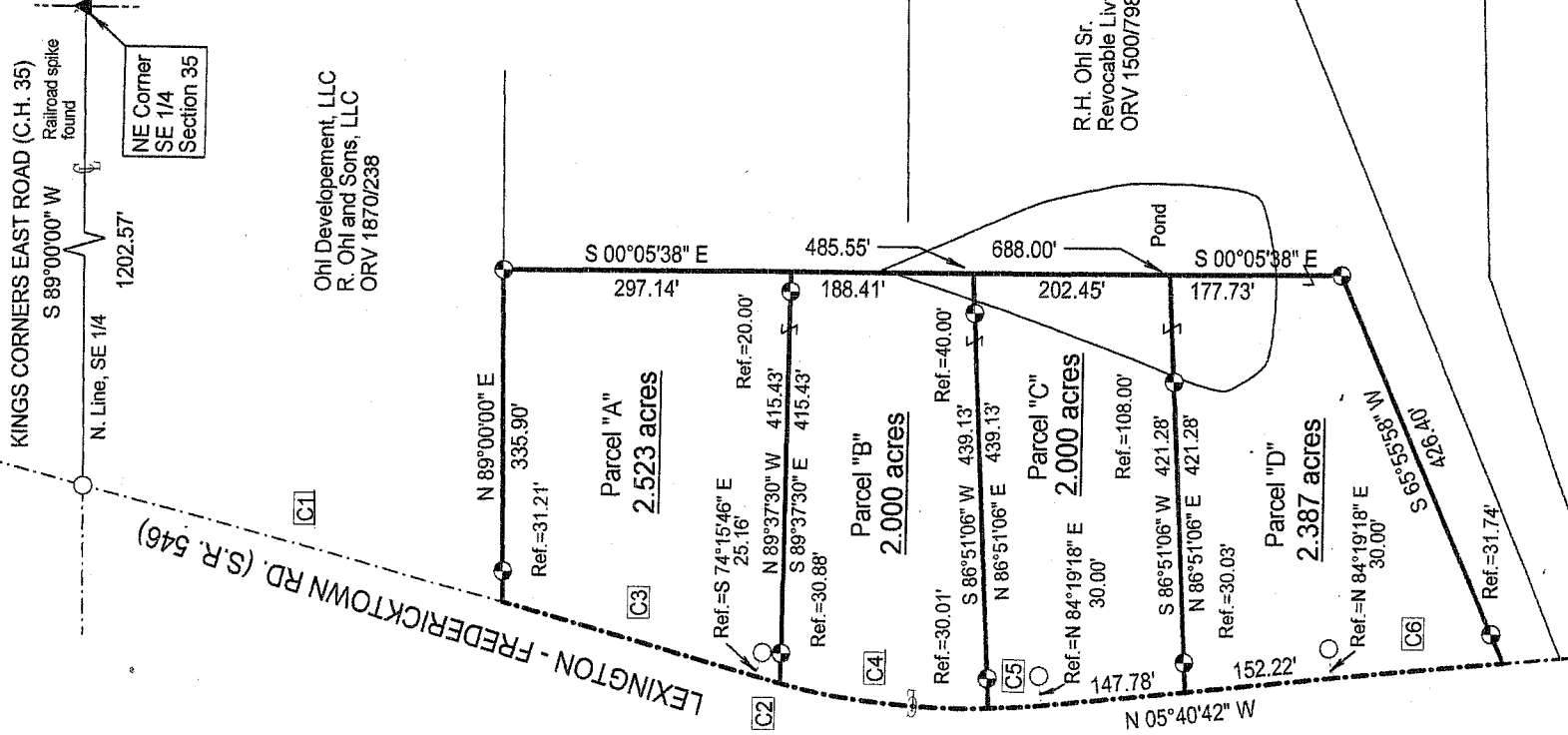


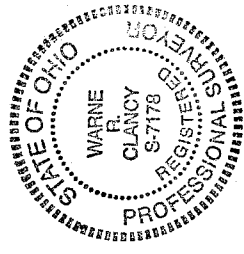
# SURVEY PLAT

Part Southeast Quarter - Section 35  
Troy Township, T-20, R-19  
Richland County, Ohio



### LEGEND

- Iron pin set with cap stamped "CLANCY 7178"
- Iron pin found



*Warne R. Clancy*  
Warne R. Clancy  
P.S. #7178

NEW SURVEY OF EXISTING PARCEL RICHLAND COUNTY TAX MAP OFFICE  
 INITIAL: MLB DATE: 11-12-08

NEW SPLIT RICHLAND COUNTY TAX MAP OFFICE  
 INITIAL: MLB DATE: 11-12-08

Curve Table					
Id	Delta	Radius	Arc Length	Chord	Ch Bear
C1	01°11'09"	21833.55'	451.89'	451.89'	S 14°25'44" W
C2	01°54'42"	798.00'	26.62'	26.62'	N 14°46'53" E
C3	00°42'55"	21833.55'	272.58'	272.58'	N 15°22'46" E
C4	15°35'18"	798.00'	217.11'	216.44'	N 06°01'53" E
C5	03°54'56"	798.00'	54.54'	54.52'	N 03°43'14" W
C6	00°40'45"	15000.00'	177.78'	177.78'	N 05°20'20" W

*Michael D'Amico*  
Troy zoning  
11-10-08

DATE: 10/29/08  
JOB NO.: W102808

SURVEY DESCRIPTION

**Part Southeast Quarter – Section 35  
Troy Township, T-20, R-19  
Richland County, Ohio**

Situated in the Township of Troy, County of Richland, State of Ohio, and being a part of the Southeast Quarter of Section 35 of Township 20 of Range 19, more particularly described as follows:

Commencing for the same at a Railroad spike found marking the northeast corner of said southeast quarter; Thence, South 89 degrees 00 minutes 00 seconds West with the north line of said quarter, the same being the centerline of Kings Corners East Road (C.H. 35), a distance of 1202.57 feet to an iron pin found marking their intersection with the centerline of the Lexington – Fredericktown Road (S.R. 546); Thence, southwesterly with said centerline along a curve to the right, defined by a 01 degree 11 minute 09 second central angle, a 21,833.55 foot radius, a 451.89 foot arc, and a 451.89 foot chord bearing South 14 degrees 25 minutes 44 seconds West, to a point thereon, the Place of Beginning;

Thence, North 89 degrees 00 minutes 00 seconds East, passing an iron pin set for reference at 31.21 feet, a distance of 335.90 feet to an iron pin set;

Thence, South 00 degrees 05 minutes 38 seconds East, a distance of 297.14 feet to a point;

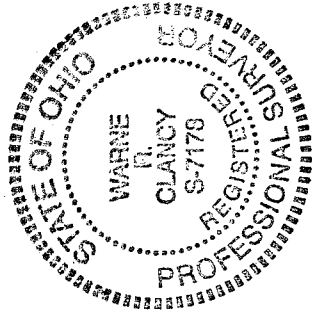
Thence, North 89 degrees 37 minutes 30 seconds West, passing iron pins set for reference at 20.00 feet and 384.55 feet, a distance of 415.43 feet to a point on the said State Route 546 centerline;

Thence, northeasterly with said centerline along a curve to the right, defined by a 01 degree 54 minute 42 second central angle, a 798.00 foot radius, a 26.62 foot arc, and a 26.62 foot chord bearing North 14 degrees 46 minutes 53 seconds East, to a point of reverse curvature thereon, referenced by an iron pin found South 74 degrees 15 minutes 46 seconds East, a distance of 25.16 feet;

Thence, continuing northeasterly with said centerline along a curve to the left, defined by a 00 degree 42 minute 55 second central angle, a 21,833.55 foot radius, a 272.58 foot arc, and a 272.58 chord bearing North 15 degrees 22 minutes 46 seconds East, to the Place of Beginning, containing 2.523 acres according to survey by Warne R. Clancy, Professional Surveyor #7178, on October 28, 2008.

Iron pins set are #5 rebars with caps stamped "CLANCY 7178".

Bearings are based on Survey F-3-63.



*Michael Deemer*  
*Troy Zarnung*  
*11-30-08*

NEW SPLIT  
RICHLAND COUNTY  
TAX MAP OFFICE  
11/30/08  
INITIAL DATE

Parcel "A" – 2.523 ac.

*Warne R. Clancy*  
Warne R. Clancy  
P.S.-7178

SURVEY DESCRIPTION

**Part Southeast Quarter – Section 35  
Troy Township, T-20, R-19  
Richland County, Ohio**

Situated in the Township of Troy, County of Richland, State of Ohio, and being a part of the Southeast Quarter of Section 35 of Township 20 of Range 19, more particularly described as follows:

Commencing for the same at a Railroad spike found marking the northeast corner of said southeast quarter; Thence, South 89 degrees 00 minutes 00 seconds West with the north line of said quarter, the same being the centerline of Kings Corners East Road (C.H. 35), a distance of 1202.57 feet to an iron pin found marking their intersection with the centerline of the Lexington – Fredericktown Road (S.R. 546); Thence, southwesterly with said centerline along a curve to the right, defined by a 01 degree 11 minute 09 second central angle, a 21,833.55 foot radius, a 451.89 foot arc, and a 451.89 foot chord bearing South 14 degrees 25 minutes 44 seconds West, to a point thereon; Thence, North 89 degrees 00 minutes 00 seconds East, passing an iron pin set for reference at 31.21 feet, a distance of 335.90 feet to an iron pin set; Thence, South 00 degrees 05 minutes 38 seconds East, a distance of 297.14 feet to a point referenced by an iron pin set North 89 degrees 37 minutes 30 seconds West, a distance of 20.00 feet, the Place of Beginning;

Thence, continuing South 00 degrees 05 minutes 38 seconds East, a distance of 188.41 feet to a point;

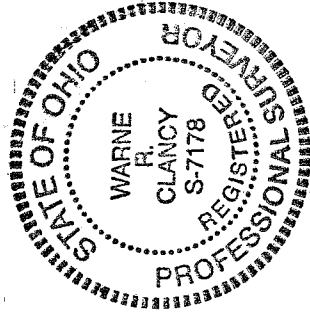
Thence, South 86 degrees 51 minutes 06 seconds West, passing iron pins set for reference at 40.00 feet and 409.12 feet, a distance of 439.13 feet to a point on the said State Route 546 centerline;

Thence, northeasterly with said centerline along a curve to the right, defined by a 15 degree 35 minute 18 second central angle, a 798.00 foot radius, a 217.11 foot arc, and a 216.44 foot chord bearing North 06 degrees 01 minutes 53 seconds East, to a point thereon;

Thence, South 89 degrees 37 minutes 30 seconds East, passing an iron pin set for reference at 30.88 feet, a distance of 415.43 feet to the Place of Beginning, containing 2.000 acres according to survey by Warne R. Clancy, Professional Surveyor #7178, on October 28, 2008.

Iron pins set are #5 rebars with caps stamped "CLANCY 7178".

Bearings are based on Survey F-3-63.



*Michael Deemer*  
*Troy Zaney*  
*11-10-08*

NEW SPLIT  
RICHLAND COUNTY  
TAX MAP OFFICE  
*MLB* *11-12-08*  
INITIAL DATE

Parcel "B" – 2.000 ac.

*Warne R. Clancy*  
Warne R. Clancy  
P.S. 7178

SURVEY DESCRIPTION

**Part Southeast Quarter – Section 35  
Troy Township, T-20, R-19  
Richland County, Ohio**

Situated in the Township of Troy, County of Richland, State of Ohio, and being a part of the Southeast Quarter of Section 35 of Township 20 of Range 19, more particularly described as follows:

Commencing for the same at a Railroad spike found marking the northeast corner of said southeast quarter; Thence, South 89 degrees 00 minutes 00 seconds West with the north line of said quarter, the same being the centerline of Kings Corners East Road (C.H. 35), a distance of 1202.57 feet to an iron pin found marking their intersection with the centerline of the Lexington – Fredericktown Road (S.R. 546); Thence, southwesterly with said centerline along a curve to the right, defined by a 01 degree 11 minute 09 second central angle, a 21,833.55 foot radius, a 451.89 foot arc, and a 451.89 foot chord bearing South 14 degrees 25 minutes 44 seconds West, to a point thereon; Thence, North 89 degrees 00 minutes 00 seconds East, passing an iron pin set for reference at 31.21 feet, a distance of 335.90 feet to an iron pin set; Thence, South 00 degrees 05 minutes 38 seconds East, a distance of 485.55 feet to a point, referenced by an iron pin set South 86 degrees 51 minutes 06 seconds West, a distance of 40.00 feet, the Place of Beginning;

Thence, continuing South 00 degrees 05 minutes 38 seconds East, a distance of 202.45 feet to a point;

Thence, South 86 degrees 51 minutes 06 seconds West, passing iron pins set for reference at 108.00 feet and 391.25 feet, a distance of 421.28 feet to a point on the said State Route 546 centerline;

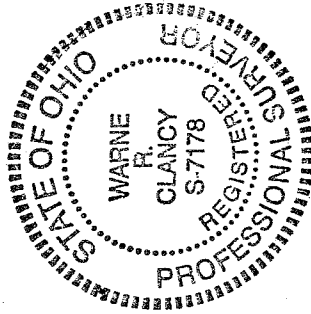
Thence, North 05 degrees 40 minutes 42 seconds West with said centerline, a distance of 147.78 feet to a point of curvature thereon, referenced by an iron pin found North 84 degrees 19 minutes 18 seconds East, a distance of 30.00 feet;

Thence, continuing northwesterly with said centerline along a curve to the right, defined by a 03 degree 54 minute 56 second central angle, a 798.00 foot radius, a 54.54 foot arc, and a 54.52 foot chord bearing North 03 degrees 43 minutes 14 seconds West, to a point thereon;

Thence, North 86 degrees 51 minutes 06 seconds East, passing an iron pin set for reference at 30.01 feet, a distance of 439.13 feet to the Place of Beginning, containing 2.000 acres according to survey by Warne R. Clancy, Professional Surveyor #7178, on October 28, 2008.

Iron pins set are #5 rebars with caps stamped "CLANCY 7178".

Bearings are based on Survey F-3-63.



Parcel "C" – 2.000 ac.

*Michael Reemer*  
*Troy 3 onery*  
*11-10-08*

NEW SPLIT  
RICHLAND COUNTY  
TAX MAP OFFICE  
MIB 11/21/08  
INITIAL DATE

*Warne R. Clancy*  
Warne R. Clancy  
P.S. 7178

SURVEY DESCRIPTION

**Part Southeast Quarter – Section 35  
Troy Township, T-20, R-19  
Richland County, Ohio**

Situated in the Township of Troy, County of Richland, State of Ohio, and being a part of the Southeast Quarter of Section 35 of Township 20 of Range 19, more particularly described as follows:

Commencing for the same at a Railroad spike found marking the northeast corner of said southeast quarter; Thence, South 89 degrees 00 minutes 00 seconds West with the north line of said quarter, the same being the centerline of Kings Corners East Road (C.H. 35), a distance of 1202.57 feet to an iron pin found marking their intersection with the centerline of the Lexington – Fredericktown Road (S.R. 546); Thence, southwesterly with said centerline along a curve to the right, defined by a 01 degree 11 minute 09 second central angle, a 21,833.55 foot radius, a 451.89 foot arc, and a 451.89 foot chord bearing South 14 degrees 25 minutes 44 seconds West, to a point thereon; Thence, North 89 degrees 00 minutes 00 seconds East, passing an iron pin set for reference at 31.21 feet, a distance of 335.90 feet to an iron pin set; Thence, South 00 degrees 05 minutes 38 seconds East, a distance of 688.00 feet to point, referenced by an iron pin set South 86 degrees 51 minutes 06 seconds West, a distance of 108.00 feet, the Place of Beginning;

Thence, continuing South 00 degrees 05 minutes 38 seconds East, a distance of 177.73 feet to an iron pin set;

Thence, South 65 degrees 55 minutes 58 seconds West, passing an iron pin set for reference at 394.66 feet, a distance of 426.40 feet to a point on the said State Route 546 centerline;

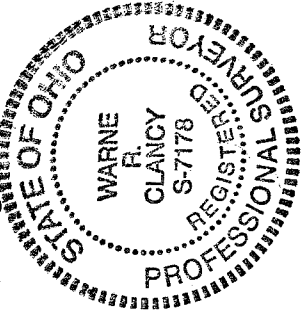
Thence, northwesterly with said centerline along a curve to the left, defined by a 00 degree 40 minute 45 second central angle, a 15,000.00 foot radius, an 177.78 foot arc, and an 177.78 foot chord bearing North 05 degrees 20 minutes 20 seconds West, to its point of tangency thereon, referenced by an iron pin found North 84 degrees 19 minutes 18 seconds East, a distance of 30.00 feet;

Thence, continuing with said centerline North 05 degrees 40 minutes 42 seconds West, a distance of 152.22 feet to a point thereon;

Thence, North 86 degrees 51 minutes 06 seconds East, passing an iron pin set for reference at 30.03 feet, a distance of 421.28 feet to the Place of Beginning, containing 2.387 acres according to survey by Waune R. Clancy, Professional Surveyor #7178, on October 28, 2008.

Iron pins set are #5 rebars with caps stamped "CLANCY 7178".

Bearings are based on Survey F-3-63.



Parcel "D" – 2.387 ac.

*Michael Deemer*  
*Way Zorany*  
*11-10-08*

NEW SURVEY  
OF EXISTING PARCEL  
RICHLAND COUNTY  
TAX MAP OFFICE  
INITIAL *MB* DATE *11-28-08*

*Waune R. Clancy*  
Waune R. Clancy  
P.S. 7178