

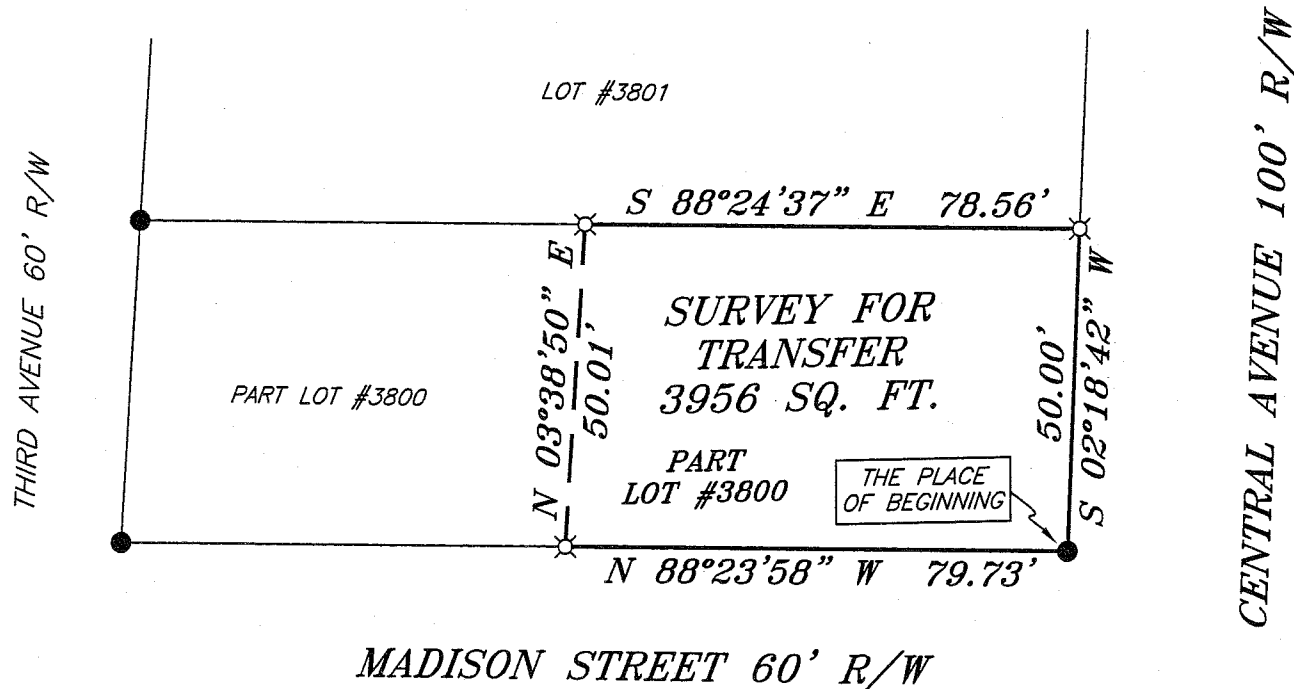


SCALE: 1" = 30'

NORTH



BEARINGS ARE BASED ON AN ASSUMED MERIDIAN AND ARE INTENDED TO BE USED FOR ANGULAR DETERMINATION ONLY.



AA-54

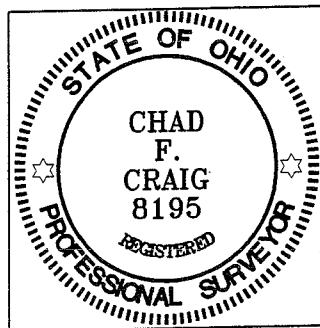
NEW SURVEY
OF EXISTING PARCEL
RICHLAND COUNTY
TAX MAP OFFICE

MLB 10-16-08
INITIAL DATE

MADISON STREET 60' R/W

Chad F. Craig

SURVEY BY: CHAD F. CRAIG P.S. #6869
for SEILER & CRAIG SURVEYING INC.
52-1/2 NORTH MAIN STREET
MANSFIELD, OHIO 44902
(419) 525-3644
FAX (419) 525-3696



LEGEND

- IRON PIN FOUND
- ⊗ MAG NAIL SPIKE SET
- ▲ RAILROAD SPIKE FOUND
- ⊗ 5/8" IRON PIN SET WITH CAP STAMPED "SEILER AND CRAIG, INC."

SURVEY PLAT FOR PROPERTY TRANSFER	
PART LOT #3800 CITY OF MANSFIELD RICHLAND COUNTY, OHIO	
DATE: OCTOBER 16, 2008	SCALE: 1"=30'
351CENTRAL.DWG	

SEILER & CRAIG SURVEYING, INC.

Douglas C. Seiler, PS & Chad F. Craig, PS

52 1/2 North Main Street

Mansfield, Ohio 44902

419-525-3644 Fax: 419-525-3696

www.seilerandcraig.com

SURVEY DESCRIPTION

PART LOT #3800
CITY OF MANSFIELD,
RICHLAND COUNTY, OHIO

Situated in the City of Mansfield, County of Richland, State of Ohio and being known as part of Lot #3800 of the consecutively numbered lots in said city, and being more particularly described as follows:

Beginning for the same at an iron pin found and accepted as marking the southeast corner of said lot; Thence, North 88 degrees 23 minutes 58 seconds West with the south line of said lot, a distance of 79.73 feet to an iron pin set;

Thence, North 03 degrees 38 minutes 50 seconds East a distance of 50.01 feet to an iron pin set on the north line of said lot;

Thence, South 88 degrees 24 minutes 37 seconds East with said north line, a distance of 78.56 feet to an iron pin set on the northeast corner thereof;

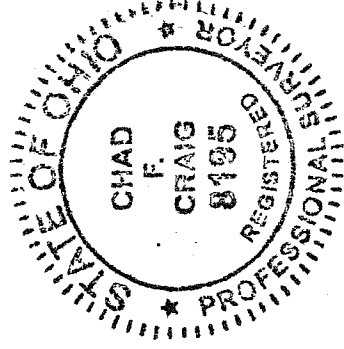
Thence, South 02 degrees 18 minutes 42 seconds West with the east line of said lot, a distance of 50.00 feet to the place of beginning, containing 3956 square feet according to survey by Chad F. Craig P.S. #8195 for Seiler and Craig Surveying, Inc. on October 16, 2008.

Iron pins set are 5/8" rods with caps stamped "SEILER AND CRAIG, INC".

Bearings are based on an assumed meridian and are intended to be used for angular determination only.

NEW SURVEY
OF EXISTING PARCEL
RICHLAND COUNTY
TAX MAP OFFICE

MS INITIAL
12-16-08 DATE



Chad F. Craig

Chad F. Craig P.S. #8195
for Seiler and Craig Surveying, Inc.

FILED