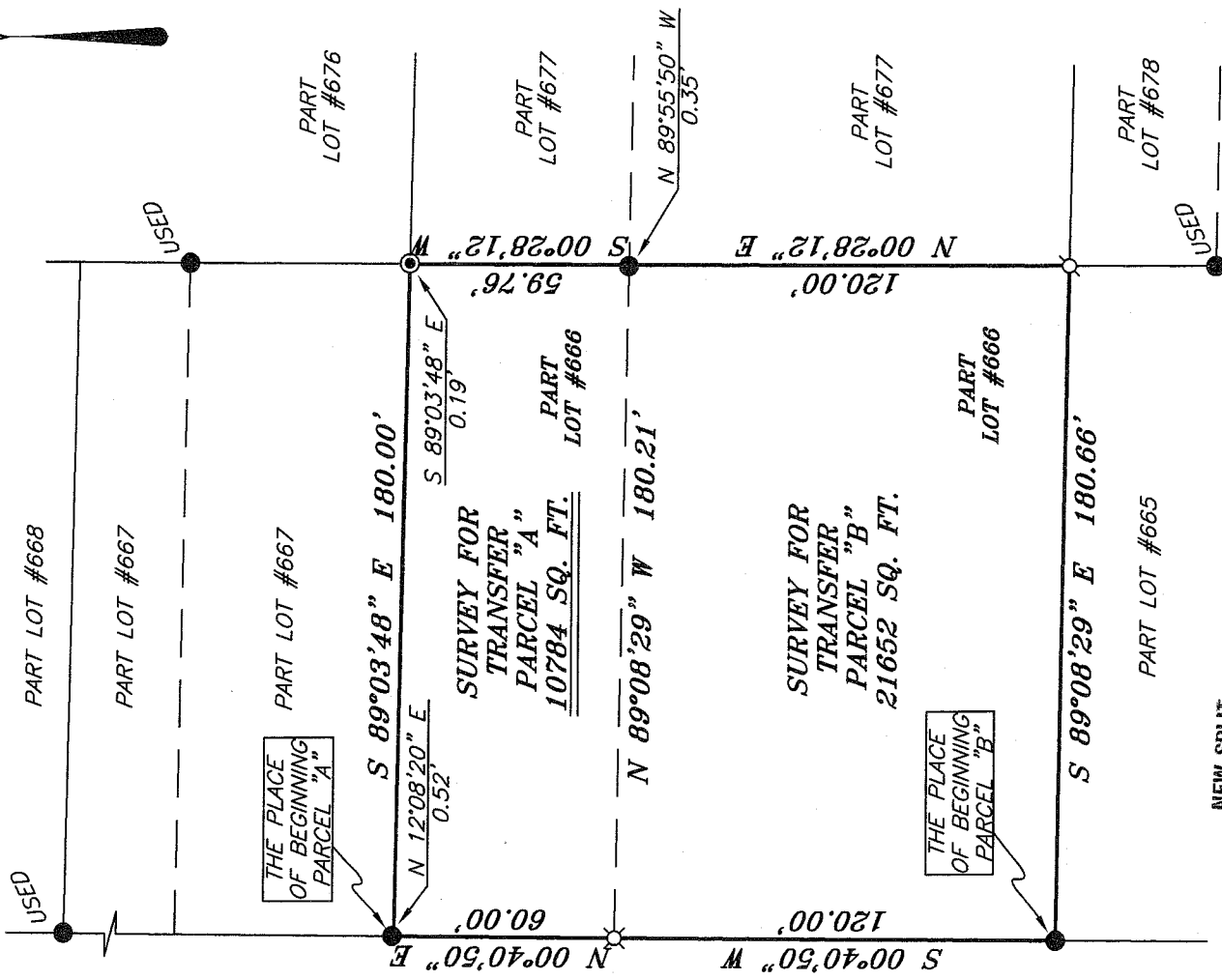
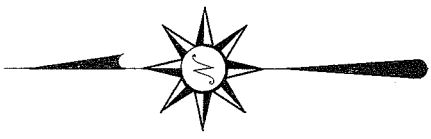




SCALE: 1" = 50'

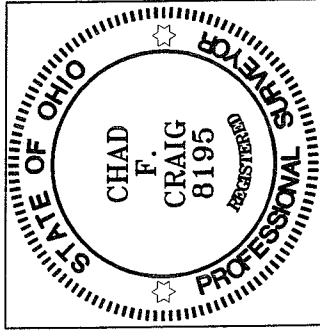
BEARINGS ARE BASED ON AN ASSUMED MERIDIAN AND ARE INTENDED TO BE USED FOR ANGULAR DETERMINATION ONLY.

NORTH



NEW SPLIT
RICHLAND COUNTY
TAX MAP OFFICE
EAK 9-19-08
INITIAL DATE

NEW SURVEY
OF EXISTING PARCEL
RICHLAND COUNTY
TAX MAP OFFICE
EAK 9-19-08
INITIAL DATE



CITY OF ONTARIO

APPROVED

DATE 9/19/08

ZONING INSPECTOR

Mallas Strickler

LEGEND

- IRON PIN FOUND
- ⊕ 2" MAG NAIL SPIKE SET
- ⊙ DRILL HOLE IN CONCRETE FOUND
- ⊗ 5/8" IRON PIN SET WITH CAP STAMPED "SEILER AND CRAIG, INC."

SURVEY BY: *Chad F. Craig*
CHAD F. CRAIG P.S. #8195
for SEILER & CRAIG SURVEYING INC.
52-1/2 NORTH MAIN STREET
MANSFIELD, OHIO 44902
(419) 525-3644
FAX (419) 525-3696

SURVEY PLAT FOR
PROPERTY TRANSFER

PART LOT #666
CITY OF ONTARIO
RICHLAND COUNTY, OHIO

DATE: SEPTEMBER 12, 2008 SCALE: 1"=50'

105MAPLE.DWG

SEILER & CRAIG SURVEYING, INC.

Douglas C. Seiler, PS & Chad F. Craig, PS

52 1/2 North Main Street

Mansfield, Ohio 44902

419-525-3644 Fax: 419-525-3696

www.seilerandcraig.com

**SURVEY DESCRIPTION
PARCEL "A"**

PART OF LOT # 666
CITY OF ONTARIO, OHIO
RICHLAND COUNTY, OHIO

Situated in the City of Ontario, County of Richland, State of Ohio and being known as a part of Lot #666 of the consecutively numbered lots in said city, and being more particularly described as follows:

Beginning for the same at the northwest corner of said lot, said corner being referenced by an iron pin found for reference on a bearing of North 12 degrees 08 minutes 20 seconds East and at a distance of 0.52 feet; Thence, South 89 degrees 03 minutes 48 seconds East with the north line of said lot, a distance of 180.00 feet to the northeast corner thereof, said corner referenced by a drill hole in concrete found on a bearing of South 89 degrees 03 minutes 48 seconds East and at a distance of 0.19 feet;

Thence, South 00 degrees 28 minutes 12 seconds West with the east line of said lot, a distance of 59.76 feet to a point, said point referenced by an iron pin found on a bearing of North 89 degrees 55 minutes 50 seconds West and at a distance of 0.35 feet;

Thence, North 89 degrees 08 minutes 29 seconds West a distance of 180.21 feet to an iron pin set on the west line of said lot;

Thence, North 00 degrees 40 minutes 50 seconds East with the west line of said lot, a distance of 60.00 feet to the place of beginning, containing 10784 square feet according to survey by Chad F. Craig P.S. #8195 for Seiler and Craig Surveying, Inc. on September 12, 2008.

NEW SPLIT

RICHLAND COUNTY
TAX MAP, OFFICE

DAY INITIAL DATE
9-19-08

Iron pins set are 5/8" rods with caps stamped "SEILER AND CRAIG, INC".

Bearings are based on an assumed meridian and are intended to be used for angular determination only.

The grantee, his heirs and assigns, do hereby covenant and agree that the parcel of land described in this instrument or any portion thereof does not constitute a principal building site.

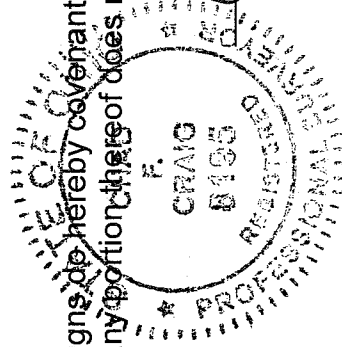
CITY OF ONTARIO

APPROVED

DATE 9/19/08

ZONING INSPECTOR

Dollar Strickland



Chad F. Craig

Chad F. Craig P.S. #8195

for Seiler and Craig Surveying, Inc.

SEILER & CRAIG SURVEYING, INC.

Douglas C. Seiler, PS & Chad F. Craig, PS
52 1/2 North Main Street
Mansfield, Ohio 44902
419-525-3644 Fax: 419-525-3696
www.seilerandcraig.com

**SURVEY DESCRIPTION
PARCEL "B"**

PART OF LOT # 666
CITY OF ONTARIO, OHIO
RICHLAND COUNTY, OHIO

Situated in the City of Ontario, County of Richland, State of Ohio and being known as a part of Lot #666 of the consecutively numbered lots in said city, and being more particularly described as follows:

Beginning for the same at an iron pin found and accepted as marking the southwest corner of said lot; Thence, South 89 degrees 08 minutes 29 seconds East with the south line of said lot, a distance of 180.66 feet to a 2" Mag Nail spike set on the east line of said lot in the base of a Silver Maple tree;

Thence, North 00 degrees 28 minutes 12 seconds East with said east line, a distance of 120.00 feet to a point, said point referenced by an iron pin found on a bearing of North 89 degrees 55 minutes 50 seconds West and at a distance of 0.35 feet;

Thence, North 89 degrees 08 minutes 29 seconds West a distance of 180.21 feet to an iron pin set on the west line of said lot;

Thence, South 00 degrees 40 minutes 50 seconds West with said west line, a distance of 120.00 feet to place of beginning, containing 21652 sq. feet according to survey by Chad F. Craig P.S. #8195 for Seiler and Craig Surveying, Inc. on September 12, 2008.

Iron pins set are 5/8" rods with caps stamped "SEILER AND CRAIG, INC".

Bearings are based on an assumed meridian and are intended to be used for angular determination only.

NEW SURVEY
OF EXISTING PARCEL
RICHLAND COUNTY
TAX MAP OFFICE

Chad F. Craig

EAFC
INITIAL

9-19-08
DATE

CITY OF ONTARIO

APPROVED

DATE 9/19/08

ZONING INSPECTOR

Dallas Strickler

Chad F. Craig P.S. #8195
for Seiler and Craig Surveying, Inc.