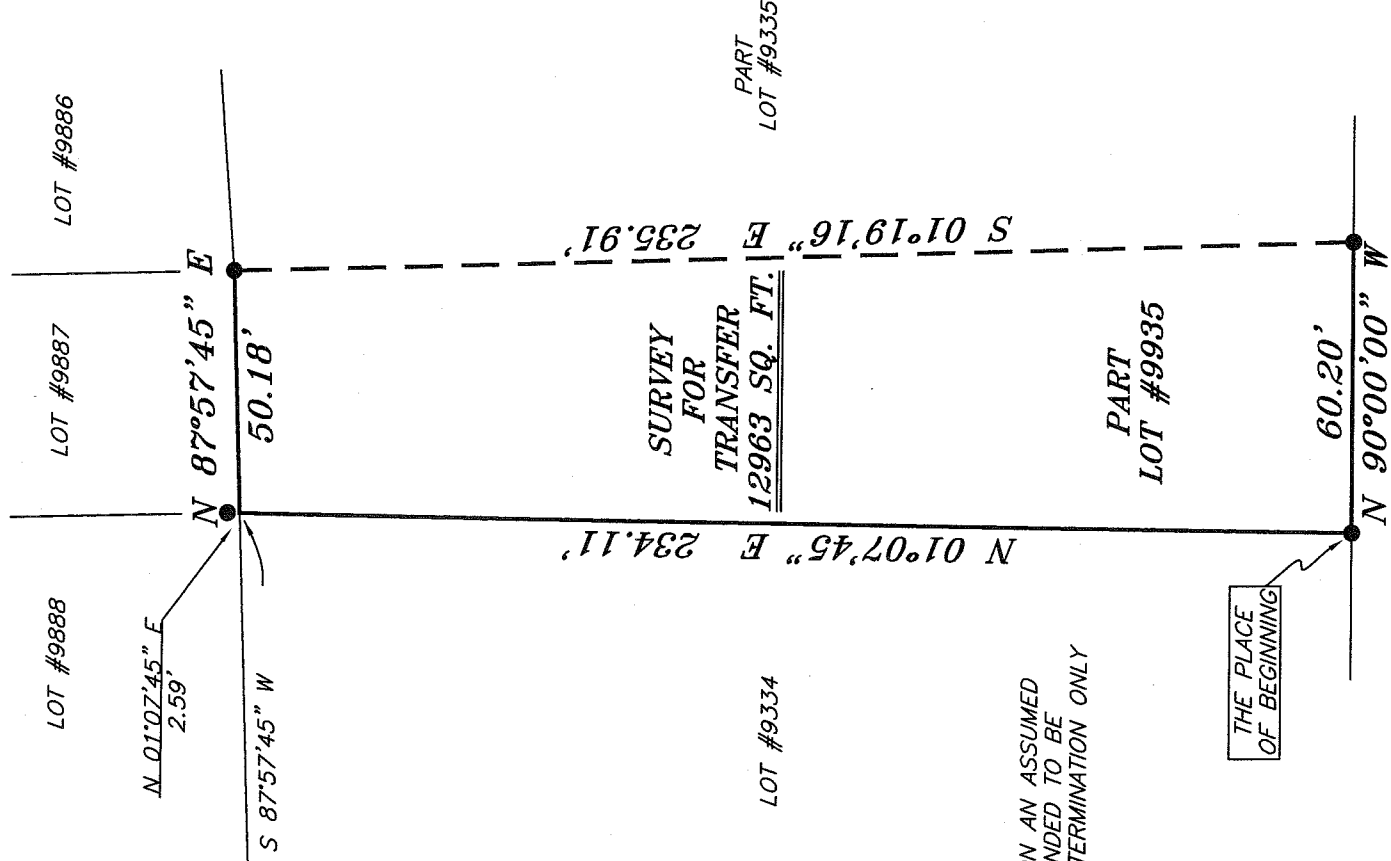
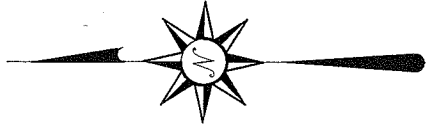
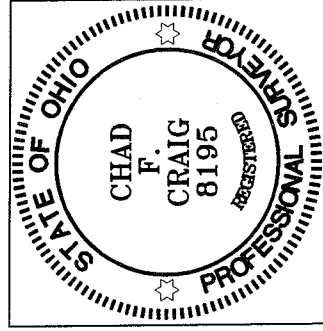


NORTH



BEARINGS ARE BASED ON AN ASSUMED MERIDIAN AND ARE INTENDED TO BE USED FOR ANGULAR DETERMINATION ONLY



NEW SURVEY
OF EXISTING PARCEL
RICHLAND COUNTY
TAX MAP OFFICE

MLB 9-5-08
INITIAL DATE

LEGEND

- IRON PIN FOUND
- ⊘ MAG NAIL SPIKE SET
- ▲ RAILROAD SPIKE FOUND
- ⊗ 5/8" IRON PIN SET WITH CAP STAMPED "SEILER AND CRAIG, INC."

Chad F. Craig

SURVEY BY: CHAD F. CRAIG P.S. #8195
for SEILER & CRAIG SURVEYING INC.
52-1/2 NORTH MAIN STREET
MANSFIELD, OHIO 44902
(419) 525-3644
FAX (419) 525-3696

SURVEY PLAT FOR
PROPERTY TRANSFER

PART LOT #9935
CITY OF MANSFIELD
RICHLAND COUNTY, OHIO

DATE: AUGUST 26, 2008 SCALE: 1"=40'

348SHPRD

AA-9

SEILER & CRAIG SURVEYING, INC.

Douglas C. Seiler, PS & Chad F. Craig, PS

52 1/2 North Main Street

Mansfield, Ohio 44902

419-525-3644 Fax: 419-525-3696

www.seilerandcraig.com

SURVEY DESCRIPTION

PART OF LOT # 9935
CITY OF MANSFIELD, OHIO

Situated in the City of Mansfield, County of Richland, State of Ohio and being known as a part of Lot #9935 of the consecutively numbered lots in said city, and being more particularly described as follows:

Beginning for the same at an iron pin found and accepted as marking the southwest corner of said lot; Thence, North 01 degree 07 minutes 45 seconds East with the west line of said lot, a distance of 234.11 feet to the northwest corner of said lot, said corner being referenced by an iron pin found on a bearing of North 01 degree 07 minutes 45 seconds East and at a distance of 2.59 feet;

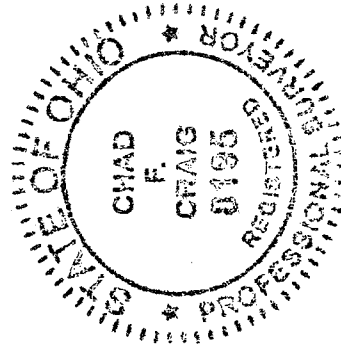
Thence, North 87 degrees 57 minutes 45 seconds East with the north line of said lot, a distance of 50.18 feet to an iron pin found;

Thence, South 01 degree 19 minutes 16 seconds East a distance of 235.91 feet to an iron pin found on the south line of said lot;

Thence, North 90 degrees 00 minutes 00 seconds West with said south line, a distance of 60.20 feet to the place of beginning, containing 12963 square feet according to survey by Chad F. Craig P.S. #8195 for Seiler and Craig Surveying, Inc. on August 26, 2008.

Iron pins set are 5/8" rods with caps stamped "SEILER AND CRAIG, INC".

Bearings are based on an assumed meridian and are intended to be used for angular determination only.



NEW SURVEY
OF EXISTING PARCEL
RICHLAND COUNTY
TAX MAP OFFICE

MLB 9-5-08
INITIAL DATE

Chad F. Craig

Chad F. Craig P.S. #8195
for Seiler and Craig Surveying, Inc.

AA-9