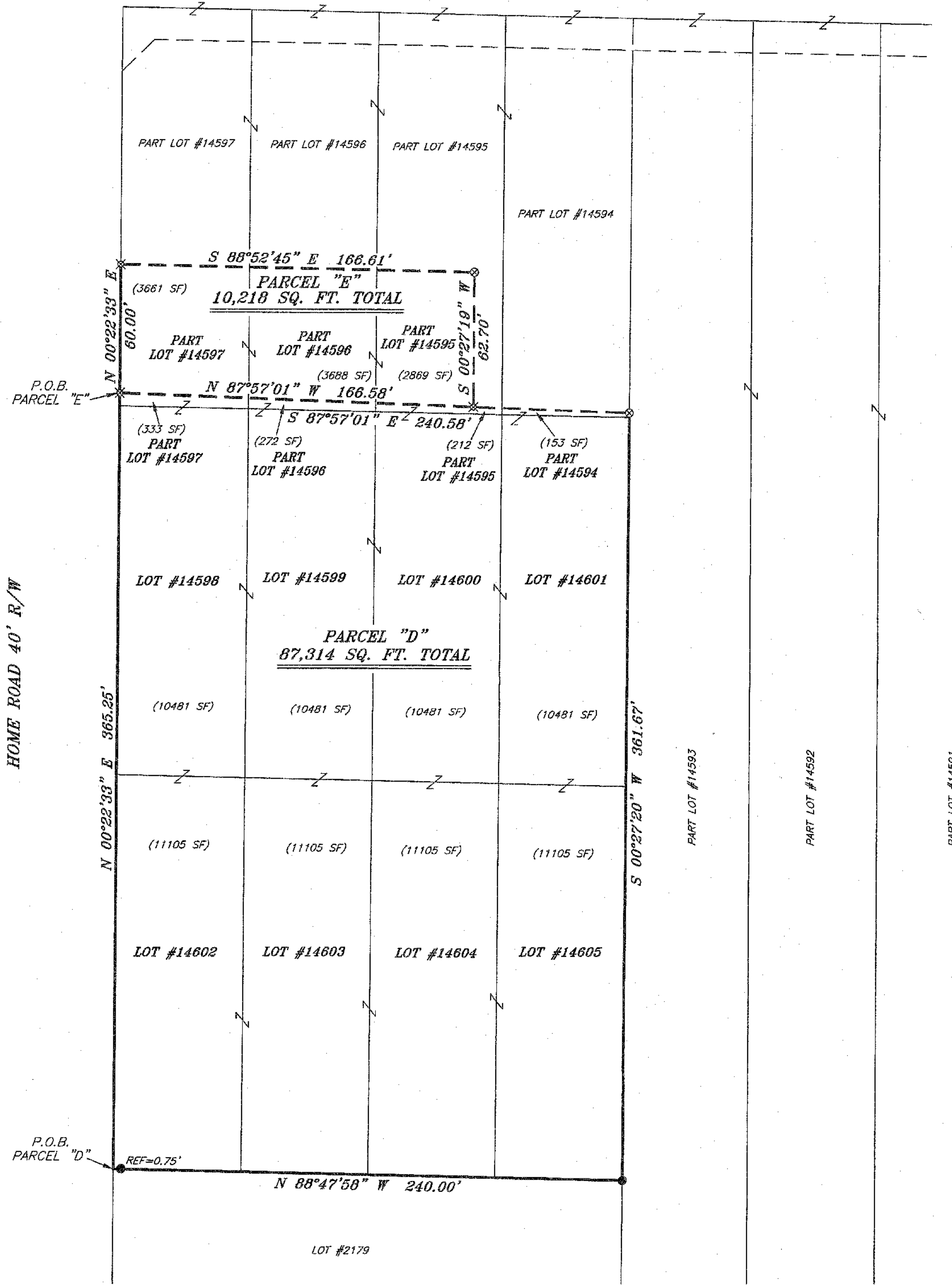


BASIS OF BEARING IS STATE PLANE
GRID NORTH NAD 83 (2011), GEOID
12A, OHIO NORTH ZONE.

NORTH



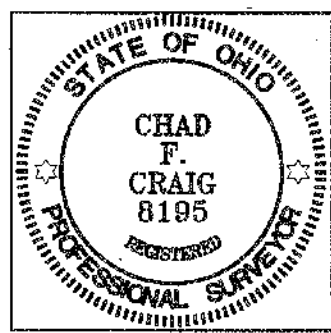
PARK AVENUE WEST



HOME ROAD 40' R/W

LEGEND

- IRON PIN FOUND
- ⊕ 2" MAG NAIL SPIKE SET
- ⊙ 3" SURVEY MARKER SET
- △ RAILROAD SPIKE SET
- ▲ RAILROAD SPIKE FOUND
- ⊗ 5/8" IRON PIN SET WITH CAP STAMPED "CRAIG 8195"



NEW SURVEY
OF EXISTING PARCEL
RICHLAND COUNTY
TAX MAP OFFICE

FAW 4-16-16
INITIAL DATE
F4-22-2

Chad F. Craig
SURVEY BY: CHAD F. CRAIG P.S. #8195
FOR SEILER & CRAIG SURVEYING INC.
270 PARK AVENUE WEST
MANSFIELD, OHIO 44902
(419) 825-3644
EMAIL: SEILERANDCRAIG@SEILERANDCRAIG.COM

SURVEY PLAT FOR PROPERTY TRANSFER	
LOTS #14598, #14599, #145600, #145601, #145602, #145603, #145604, #145605 & PART LOTS #14594, #14595, #14596, #14597 CITY OF MANSFIELD RICHLAND COUNTY, OHIO	
DATE: MARCH 29, 2016	SCALE: 1"=40'
PAW_1493_MMG_D_E	