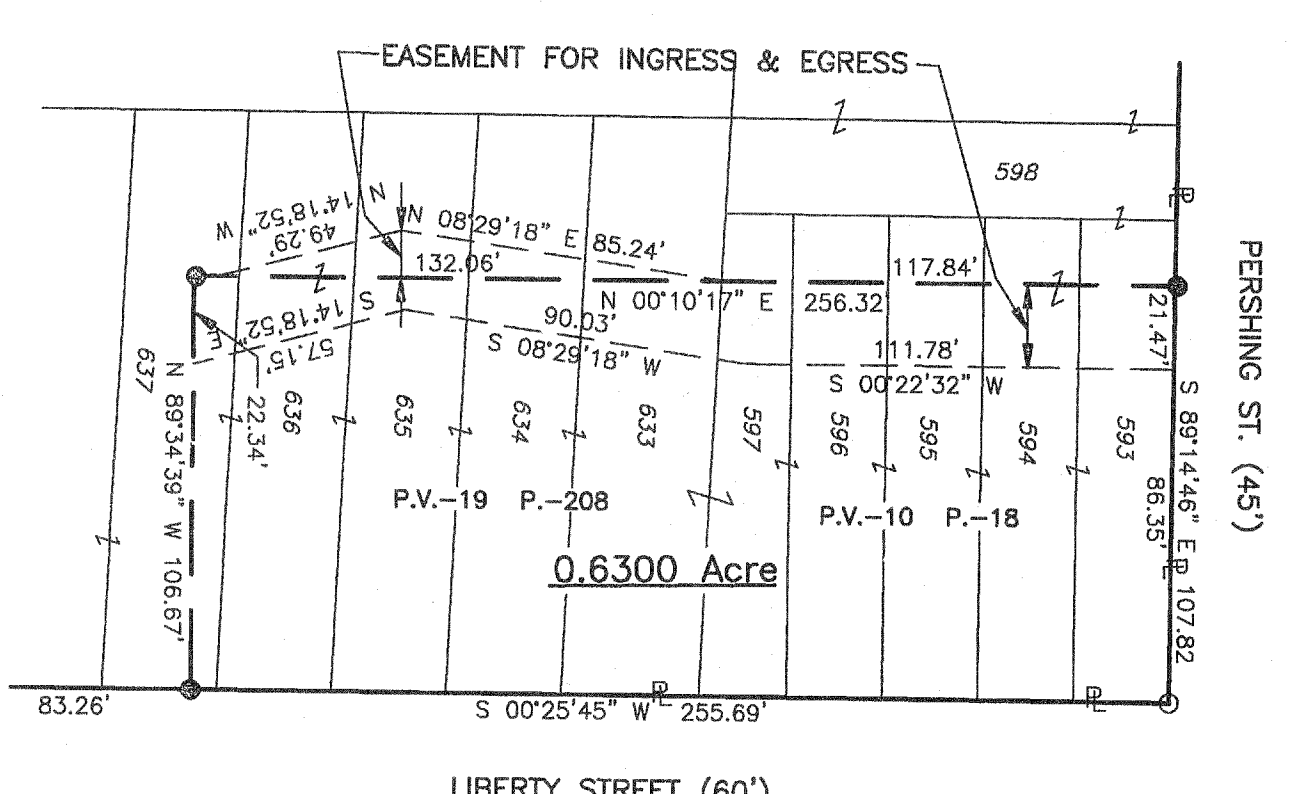
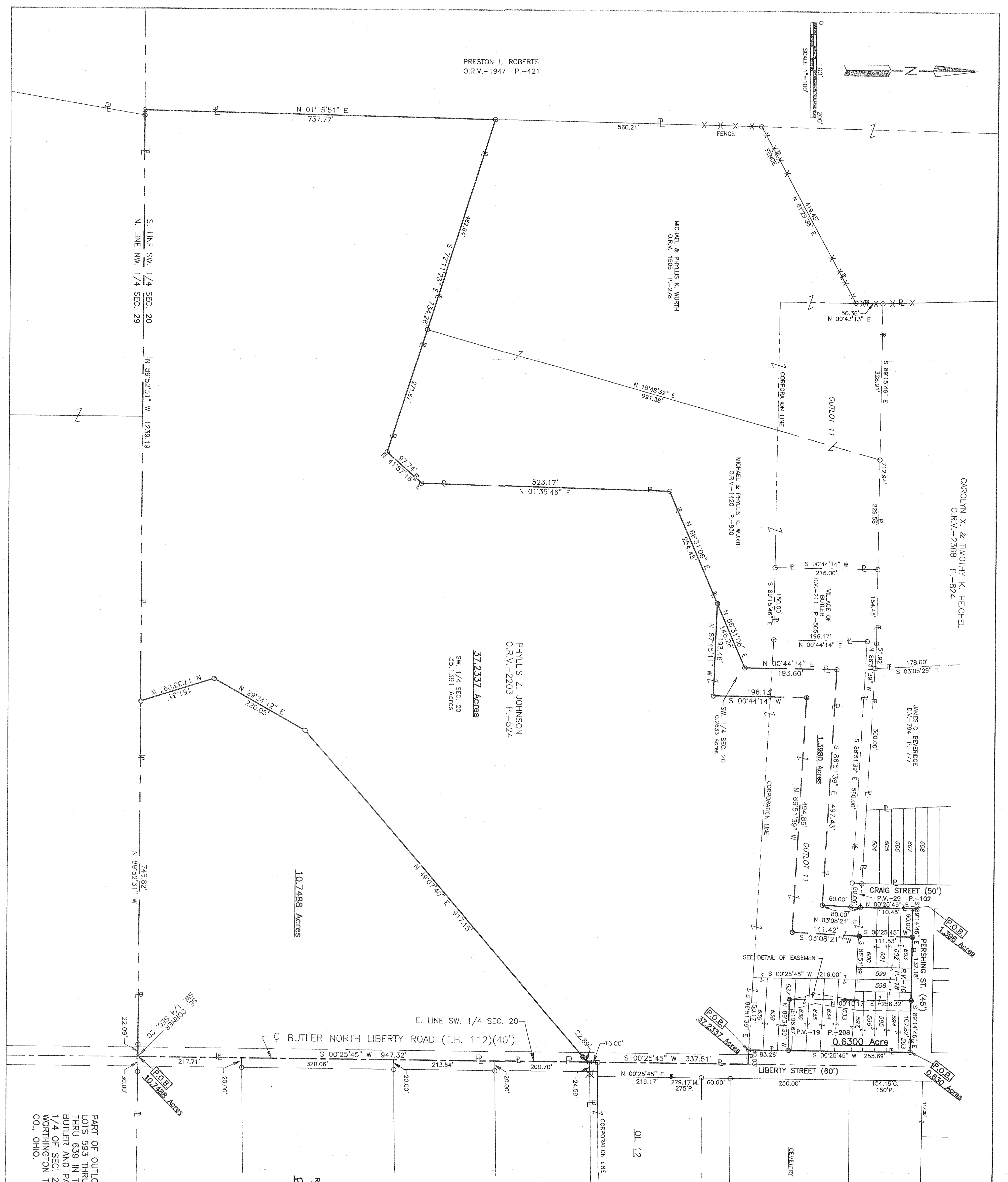


PRESTON L. ROBERTS  
O.R.V.-1947 P.-421



ACREAGE BREAKDOWN

LOT NO.	AREA	LOT NO.	AREA	LOT NO.	AREA
E. PT. 593	0.0618 Acres	W. PT. 600	0.0505 Acres	W. PT. 593	0.0089 Acres
E. PT. 594	0.0618 Acres	W. PT. 601	0.0344 Acres	W. PT. 594	0.0100 Acres
E. PT. 595	0.0617 Acres	W. PT. 602	0.0344 Acres	W. PT. 595	0.0100 Acres
E. PT. 596	0.0617 Acres	W. PT. 603	0.0344 Acres	W. PT. 596	0.0101 Acres
E. PT. 597	0.0510 Acres	PT. OUTLOT 11	0.2910 Acres	W. PT. 597	0.0073 Acres
E. PT. 603	0.0885 Acres			598	0.0673 Acres
E. PT. 604	0.0737 Acres			599	0.0667 Acres
E. PT. 605	0.0736 Acres			E. PT. 600	0.0586 Acres
E. PT. 606	0.0735 Acres			E. PT. 601	0.0373 Acres
E. PT. 607	0.0227 Acres			E. PT. 602	0.0373 Acres
				E. PT. 603	0.0354 Acres
				W. PT. 604	0.0286 Acres
				W. PT. 605	0.0297 Acres
				W. PT. 606	0.0288 Acres
				W. PT. 607	0.0806 Acres
				639	0.1033 Acres
				PT. OUTLOT 11	1.3311 Acres

NEW SPLIT  
RICHLAND COUNTY  
TAXMAP OFFICE  
DATE 1-15-15

NEW SURVEY  
OF EASEMENT  
RICHLAND COUNTY  
TAXMAP OFFICE  
DATE 1-15-15

LEGEND  
 METAL FENCE POST FOUND  
 IRON PIN FOUND  
 RAILROAD SPIKE FOUND  
 IRON PIN SET, 5/8" DIA. ROD WITH PLASTIC CAP STAMPED "STEVENS"

ROGER L. STEVENS  
7052  
REGISTERED SURVEYOR

Roger L. Stevens, P.S. #7052

Distances shown hereon are expressed in feet and decimal parts  
and bearings are to an assumed meridian and are used to express  
angles only.

CERTIFICATION: I hereby certify that the foregoing survey was prepared from actual  
field measurements, in accordance with Chapter 4733-37, Ohio Administration Code.

PART OF OUTLOT 11, ALL OF  
LOTS 593 THRU 603 & 633  
THRU 639 IN THE VILLAGE OF  
BUTLER AND PART OF THE SW.  
1/4 OF SEC. 20, T-21, R-17,  
WORTHINGTON TWP., RICHLAND  
CO., OHIO.

**SURVEY FOR  
PHYLLIS Z. JOHNSON**

DRAWN	CHECKED	SCALE	DATE
1544	1544	1" = 100'	4-21-15
JOB NO.	SHEET	OF	
1544	1	1	