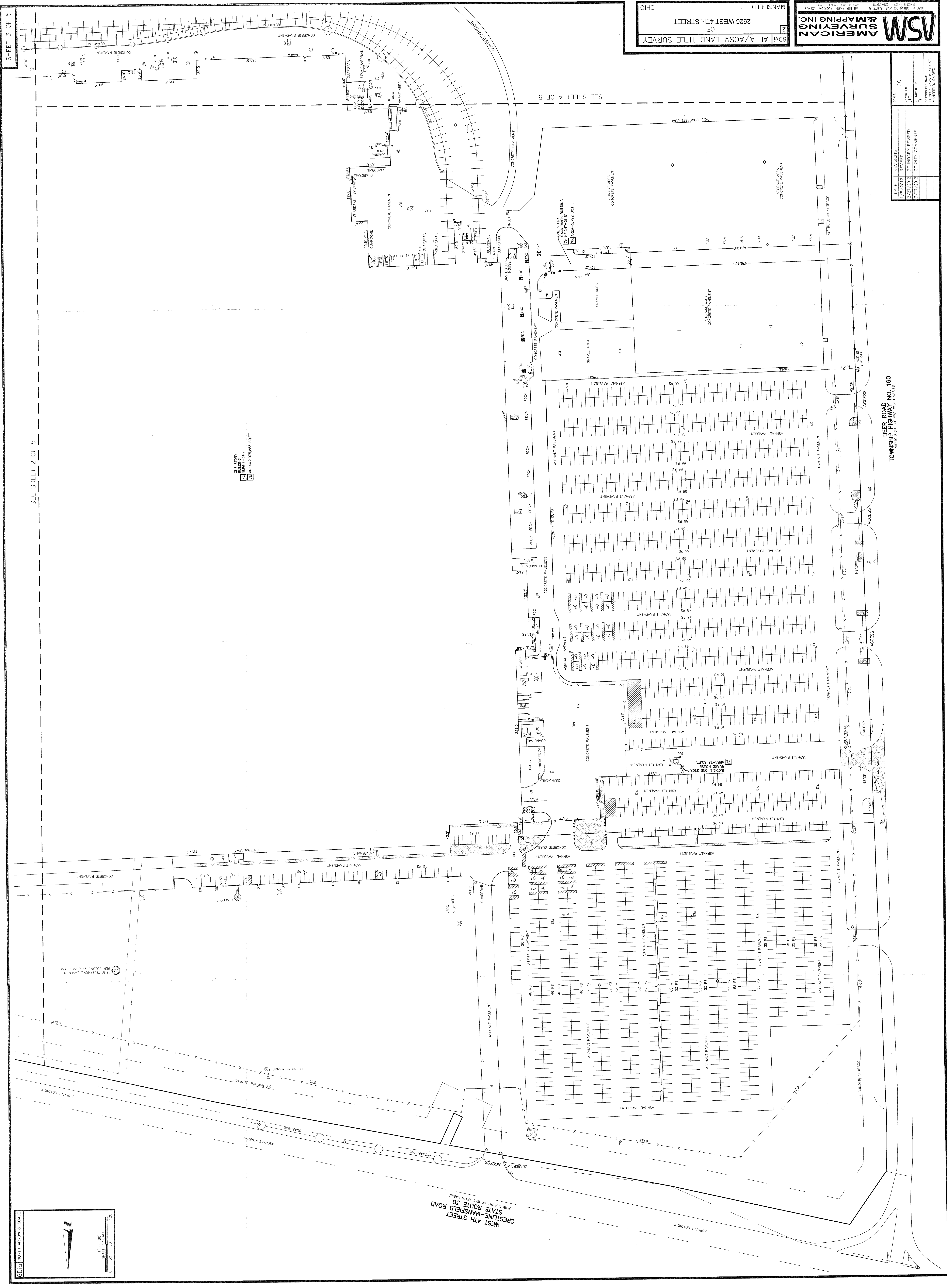


DATE	REVISIONS
1/25/2012	REVISION
2/27/2012	BOUNDARY REVISION
3/07/2012	COUNTY COMMENTS

APPROVED BY: [Signature]
 PROJECT FILE NAME: [Text]
 DRAWING NO.: [Text]
 SHEET NO.: [Text]



SHEET 3 OF 5

SEE SHEET 2 OF 5

SEE SHEET 4 OF 5

BEER ROAD NO. 160
 TOWNSHIP HIGHWAY
 160' RIGHT OF WAY WITH VARIES

WEST 4TH STREET
 STATE ROUTE 30
 PUBLIC RIGHT OF WAY WITH VARIES

