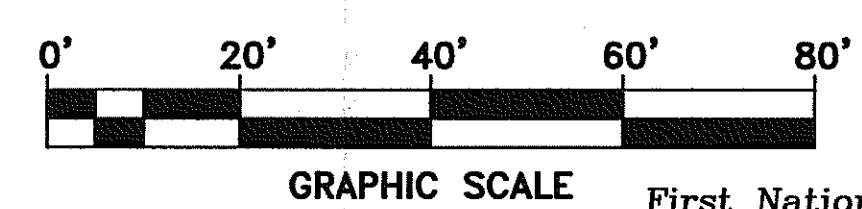
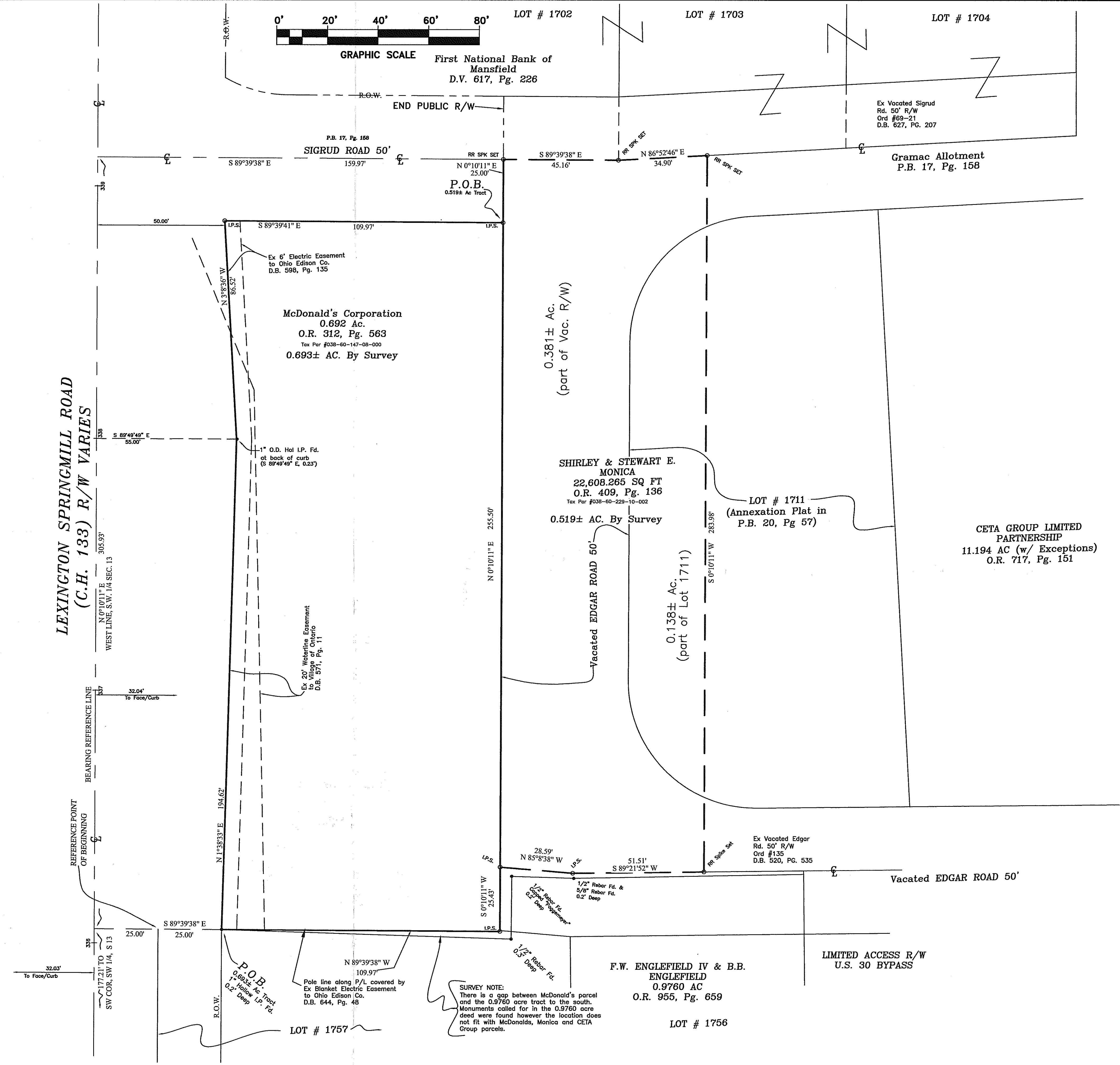


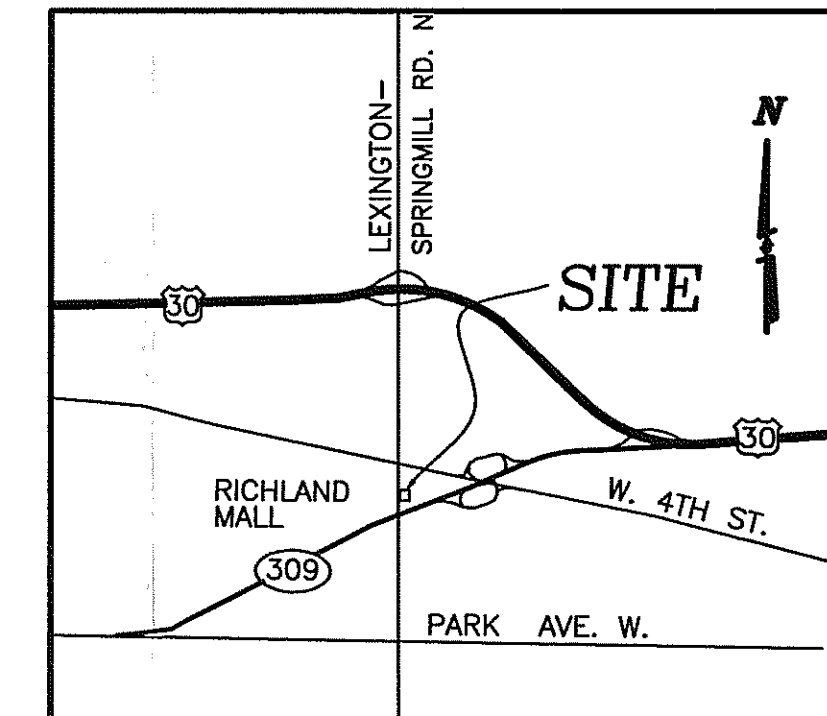
S:\PROJECTS 2006\3587-ALTA.dwg 2011 5:06pm



First National Bank of Mansfield
D.V. 617, Pg. 226



Situated in the State of Ohio, County of Richland, City of Ontario, (Springfield Township) being in the Southwest Quarter of Section 13, Township 21, Range 19, Congress Lands.



VICINITY MAP
NO SCALE

LEGEND

- San. — Sanitary Sewer
- St. — Storm Sewer
- W — Water Main
- G — Gas Line
- U/C — Underground Cables
- O/L — Overhead Lines
- Manhole
- ⊞ Storm Inlet
- ⊞ Fire Hydrant
- ⊞ Utility Pole
- Guy Wire
- x-x — Fence
- △ Sign
- Valve Box
- Gas Line Marker
- Telephone Closure
- I.P.S. ∞ Iron Pin Set

NOTES

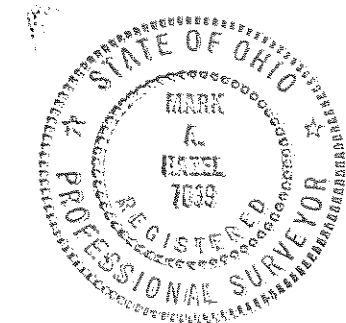
1. This drawing was prepared in reliance on Chicago Title Insurance Company, Order No. 38100128 dated October 25, 2010 (for the McDonald's tract only).
2. Utility locations on this survey are reported from field locations or information provided by utility representatives. This does not mean there could not be other utilities in the area.
3. According to F.E.M.A. Map Service Center, the City of Ontario, Ohio is a participant in the National Flood Insurance Program, Community No. 390478 has no maps published.
- 4) Add 1300 to all spot elevations shown to obtain NAVD88 DATUM.
- 5) Iron Pins Set (I.P.S.) are 5/8" rebar, 30" long with yellow plastic caps stamped "SITE ENG INC".
- 6) Bearings are used for the determination of angles only. For the purpose of this survey a bearing of N 0°10'11" E was used on the centerline of Lexington-Springmill Road as determined from a RTK-GPS observation using O.D.O.T. CORS/VRS Network.

TO: Chicago Title Insurance Company, McDonald's USA, LLC a Delaware Limited Liability Company, McDonald's Real Estate Company, a Delaware Corporation and McDonald's Corporation, a Delaware Corporation;

THIS IS TO CERTIFY THAT THIS MAP OR PLAT AND SURVEY ON WHICH IT IS BASED WERE MADE DURING NOVEMBER 2010 IN ACCORDANCE WITH "MINIMUM STANDARD DETAIL REQUIREMENTS FOR ALTA/ACSM LAND TITLE SURVEYS" JOINTLY ESTABLISHED AND ADOPTED BY ALTA AND NSPS IN 2005, AND INCLUDES ITEMS 1,2,3,4,5,6,7,8,9,10,11,12,13,14,15 and 16 OF TABLE A THEREOF. PURSUANT TO THE ACCURACY STANDARDS AS ADOPTED BY ALTA, AND NSPS, AND IN AFFECT ON THE DATE OF THIS CERTIFICATION, UNDERSIGNED FURTHER CERTIFIES THAT THE RELATIVE POSITIONAL ACCURACY OF THIS SURVEY DOES NOT EXCEED THAT WHICH IS SPECIFIED THEREIN.

SITE ENGINEERING, INC.

By *Mark A. Hengel* 2-4-11
Professional Surveyor No. 7039



NEW SURVEY OF EXISTING PARCEL RICHLAND COUNTY TAX MAP OFFICE
FAX 2-11-11 DATE 2-4-11 INITIAL F4-132

Any information or data on this drawing is not intended to be suitable for reuse by any person, firm or corporation or any others on extensions of this project or for any use on any other project. Any reuse without written verification and adoption by the Engineer, Architect or Surveyor for the specific purpose intended will be at the users sole risk and without liability or legal exposure to the Engineer, Architect or Surveyor.

REV.	DATE	DESCRIPTION	BY:
1	2-3-11	Richland County Review Comments	M.A.H.

SITE ENGINEERING
Incorporated
Civil Engineers & Surveyors
7453 East Main Street
Reynoldsburg, OH 43068
Phone: (614) 759-9900
Fax: (614) 759-9902
eMail: siteeng@ameritechnet.net

McDonald's
ONTARIO, OHIO LEXINGTON SPRINGMILL RD.
L/C: #30-714
PLAT OF SURVEY

DATE:	NOV. 2010
SCALE:	1"=20'
DRAWN BY:	S.E.I.
CHECKED BY:	M.A.H.
JOB NO.:	3587
SHEET:	1 / 1