


- LEGEND**
- IRON PIN FOUND
  - ▲ RR SPIKE FOUND
  - ♣ MAG NAIL SPIKE FOUND
  - ⊗ IRON PIN SET WITH CAP STAMPED "SEILER 6869"



Distances shown hereon are expressed in feet and decimal parts thereof.

Bearings recited herein are relative to survey "F-3-148" on file at the Richland County Tax Map Office and are for the purpose of determining directional variations.

CERTIFICATION: I hereby state that the foregoing survey was prepared from actual field measurements, in accordance with Chapter 4733-37, Ohio Administrative Code. Field measurements were conducted in 2002-2003 by Chad Craig, Jeff Banks, and Nathaniel Ramsey under the direction and supervision of Douglas C. Seiler Professional Surveyor #6869. Improvements shown herein are approximate location only and were placed using aerial imagery.

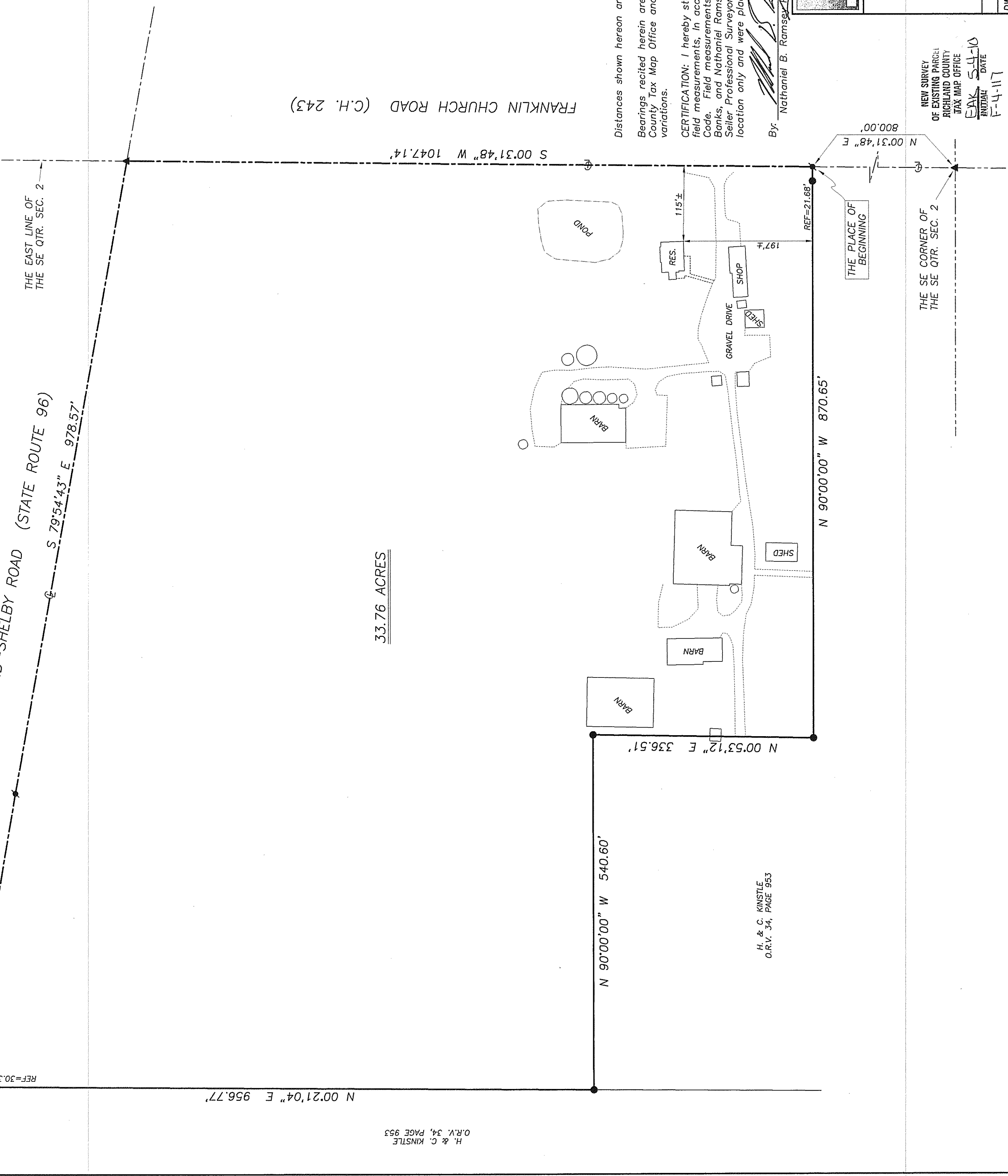
By:  Date: 5/1/2010  
 Nathaniel B. Ramsey, P.S. #8396

**SHAFER, JOENSTON LICHTENWALTER & ASSOCIATES, INC.**  
 Consulting Engineers & Surveyors  
 909 South Main Street Mansfield, Ohio 44907  
 TEL (419) 756-7302  
 FAX (419) 756-0867 EMAIL nramsey@sjl-inc.com

**SURVEY MADE AT THE REQUEST OF:**

**HOWARD KINSTLE**  
 PART OF THE SOUTHEAST  
 QUARTER OF SECTION 2, WELLS TOWNSHIP  
 T-22 N. R-18 W  
 RICHLAND COUNTY, OHIO

DWG NO:	KINSTLE3	JOB NO:	SM-1972	SHEET	1 OF 1
CHECKED		SCALE	1" = 100'	DATE	04//26/2010



33.76 ACRES

H. & C. KINSTLE  
 O.R.V. 34, PAGE 953

H. & C. KINSTLE  
 O.R.V. 34, PAGE 953

NEW SURVEY OF EXISTING PARCEL  
 RICHLAND COUNTY  
 TAX MAP OFFICE  
 E.A.V. 54-10  
 INITIAL DATE  
 F-4-117