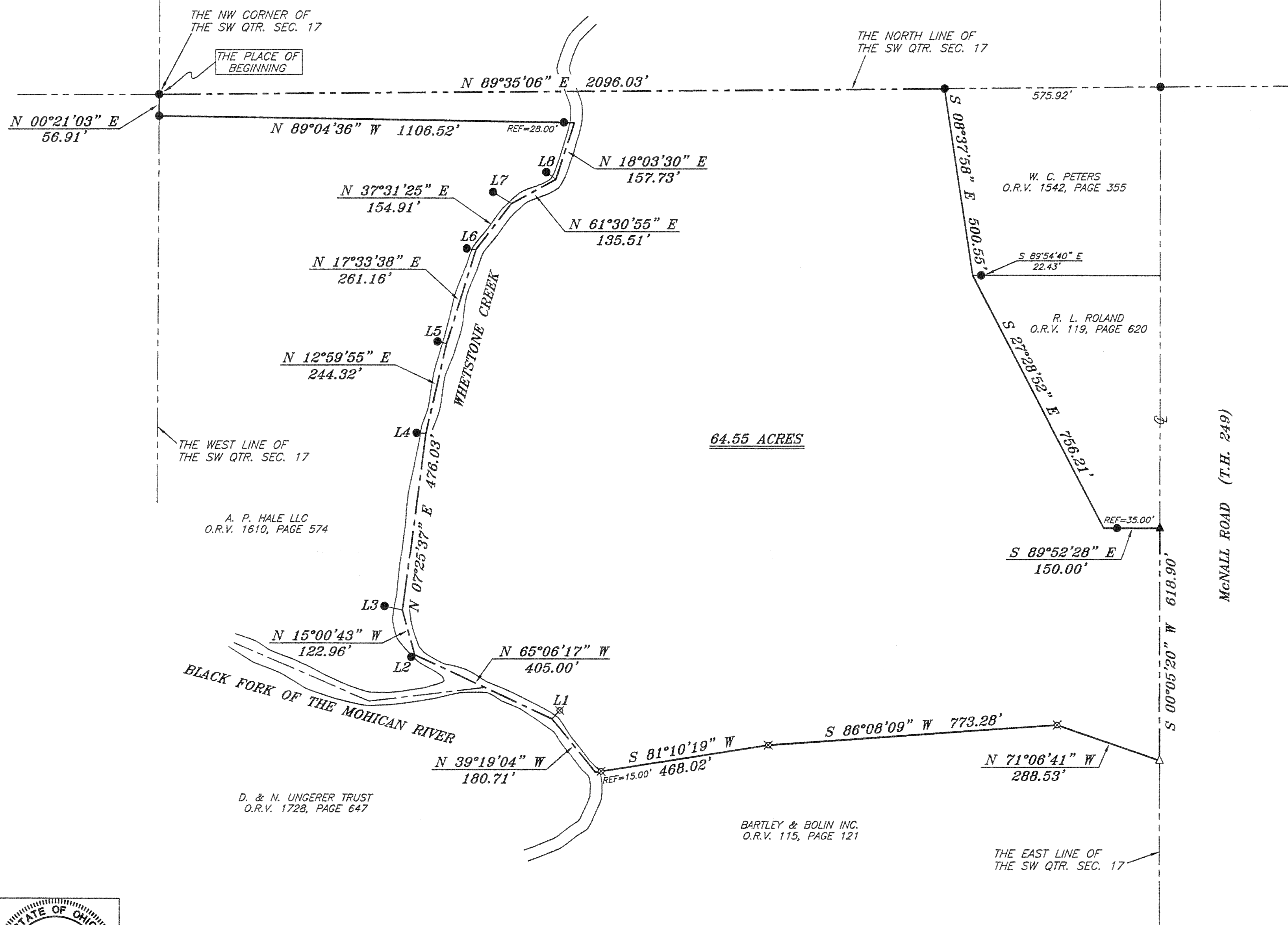
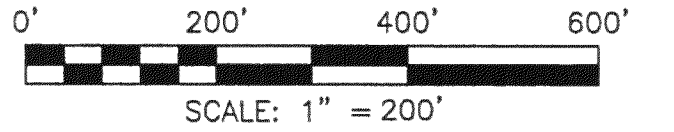


NORTH



BEARINGS ARE BASED ON AN ASSUMED MERIDIAN AND ARE INTENDED TO BE USED FOR ANGULAR DETERMINATION ONLY



64.55 ACRES

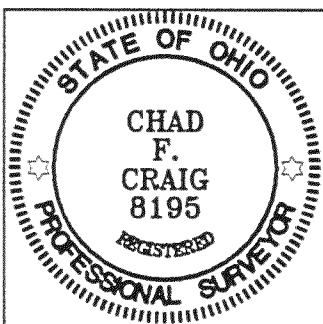
McNALL ROAD (T.H. 249)

LEGEND

- IRON PIN FOUND
- ⊕ 2" MAG NAIL SPIKE SET
- △ RAILROAD SPIKE SET
- ▲ RAILROAD SPIKE FOUND
- ⊗ 5/8" IRON PIN SET WITH CAP STAMPED "CRAIG 8195"

LINE	BEARING	DISTANCE
L1	N 41°17'04" E	30.00'
L2	S 55°54'32" W	10.84'
L3	N 77°23'28" W	49.07'
L4	N 86°54'19" W	25.00'
L5	N 76°01'17" W	24.59'
L6	N 82°58'20" W	25.00'
L7	N 57°55'10" W	57.49'
L8	N 53°46'06" W	32.00'

SURVEY PLAT FOR
 BARTLEY & BOLIN INC.
 PART SW QTR. SEC. 17, T-24, R-17
 WELLER TOWNSHIP
 RICHLAND COUNTY, OHIO
 DATE: SEPT. 28, 2009 SCALE: 1"=200'
 BARTLEYBOLIN09



Chad F. Craig
 SURVEY BY: CHAD F. CRAIG P.S. #8195
 for SEILER & CRAIG SURVEYING INC.
 52-1/2 NORTH MAIN STREET
 MANSFIELD, OHIO 44902
 (419) 525-3644
 FAX (419) 525-3696

Approved
 Weller Township
 4 Oct 2009
Edwin Kharbelle

NEW SPLIT
 RICHLAND COUNTY
 TAX MAP OFFICE
 EAR 10-6-09
 INITIAL DATE
 F.4-103