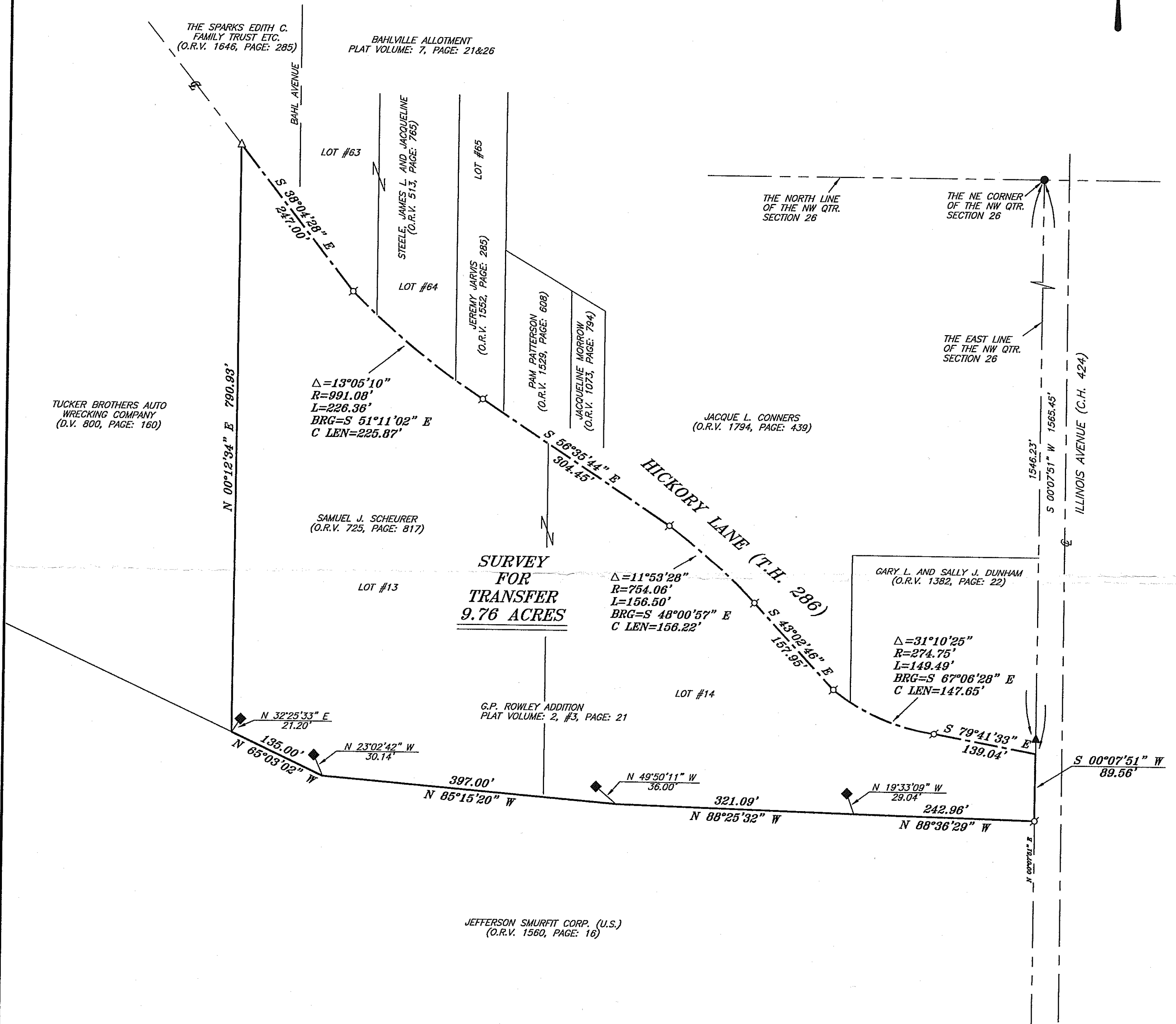
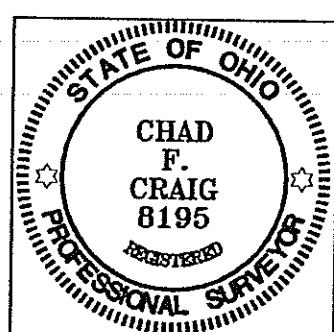


NORTH



BEARINGS ARE BASED ON SURVEY F-1-177
ON FILE AT THE RICHLAND COUNTY TAX
MAP OFFICE AND ARE INTENDED TO BE
USED FOR ANGULAR DETERMINATION ONLY.

NEW SURVEY
OF EXISTING PARCEL
RICHLAND COUNTY
TAX MAP OFFICE
INITIAL: MB DATE: 5-7-08



Chad F. Craig
SURVEY BY: CHAD F. CRAIG P.S. #8195
for SEILER & CRAIG SURVEYING INC.
32-1/2 NORTH MAIN STREET
MANSFIELD, OHIO 44902
(419) 525-3644
FAX (419) 525-3696

LEGEND

- IRON PIN FOUND
- ⊕ 2" MAG NAIL SPIKE SET
- △ RAILROAD SPIKE SET
- ▲ RAILROAD SPIKE FOUND
- ◆ METAL FENCE POST FOUND
- ⊗ 5/8" IRON PIN SET WITH CAP
STAMPED "SEILER AND CRAIG, INC."

SURVEY PLAT FOR PROPERTY TRANSFER	
PART NW QTR. SECTION 26, T-21, R-18 MADISON TOWNSHIP RICHLAND COUNTY, OHIO	
DATE: MAY 5, 2008	SCALE: 1"=100'
SCHEURER08.DWG	