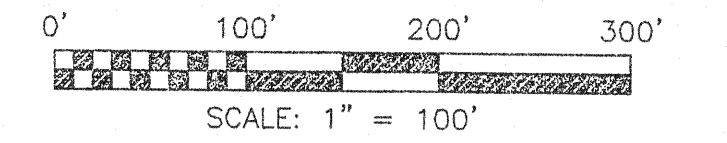
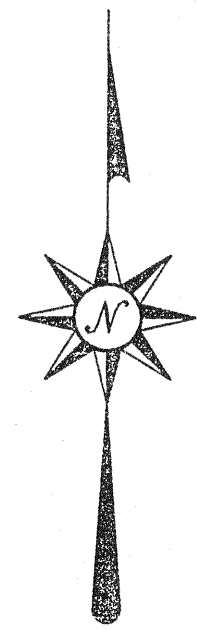
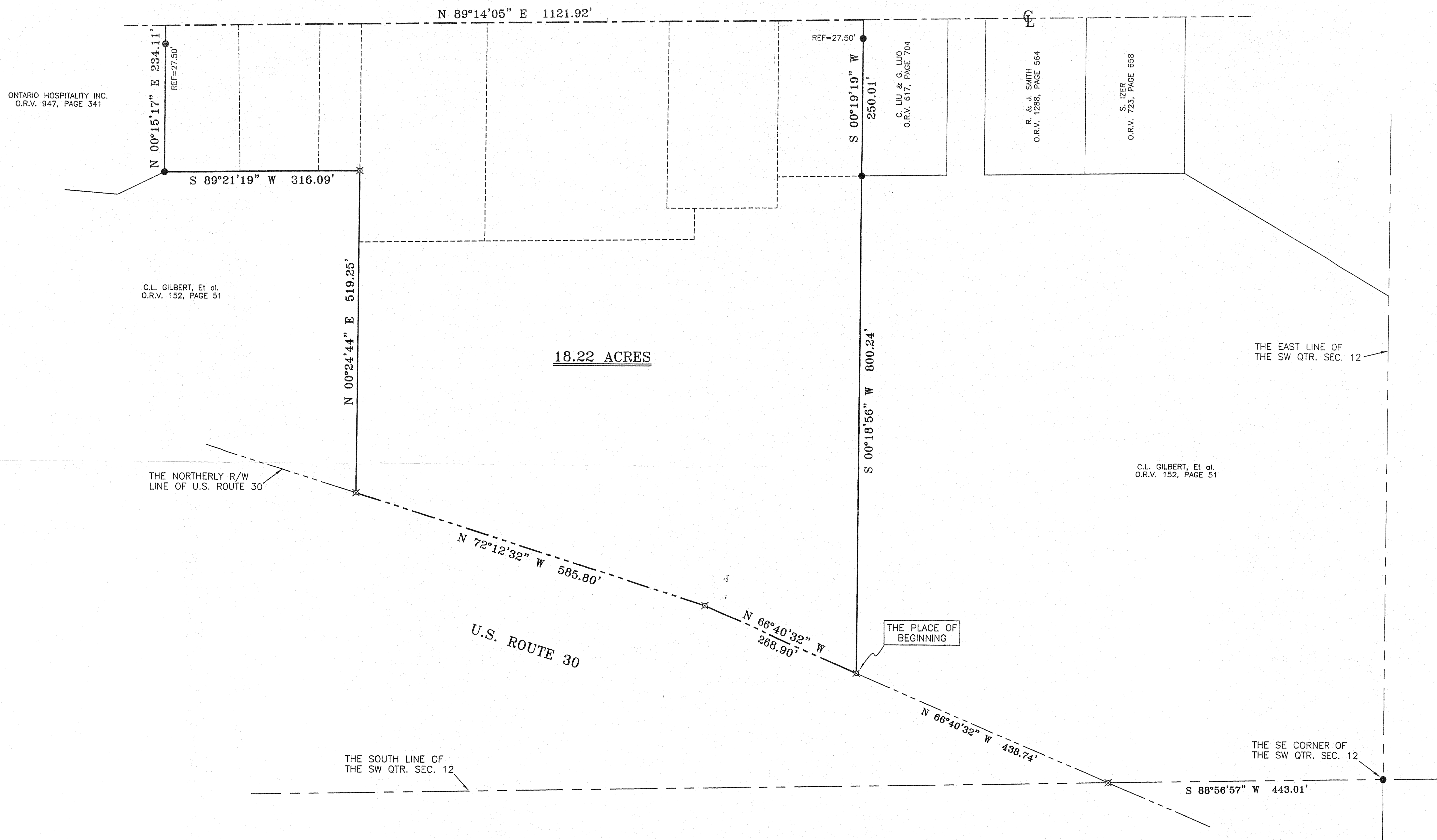


NORTH



WALKER LAKE ROAD (C.H. 164)



BEARINGS ARE BASED ON AN ASSUMED MERIDIAN

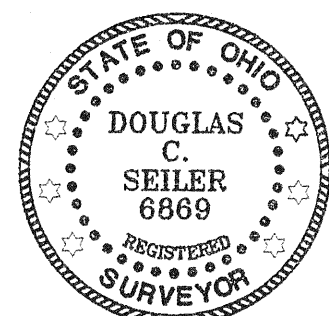
18.22 ACRES

U.S. ROUTE 30

LEGEND

- IRON PIN FOUND
- ▲ RR SPIKE FOUND
- ⊕ MAG NAIL SPIKE SET
- ⊗ IRON PIN SET WITH CAP STAMPED "SEILER AND CRAIG INC."

*Douglas C. Seiler*  
 SURVEYED BY: DOUGLAS C. SEILER PS #6869  
 FOR SEILER & CRAIG SURVEYING INC.  
 52-1/2 NORTH MAIN STREET  
 MANSFIELD, OHIO 44902  
 (419) 525-3644  
 FAX (419) 525-3696



NEW SURVEY  
 OF EXISTING PARCEL  
 RICHLAND COUNTY  
 TAX MAP OFFICE  
 FAX 1-19-07  
 INITIAL DATE

SURVEY PLAT FOR	
DONLEY	
PART SW QTR. SEC. 12, T-21, R-1	
CITY OF ONTARIO	
RICHLAND COUNTY, OHIO	
DATE: JANUARY 8, 2007	SCALE: 1"=100'
MENARDS06	