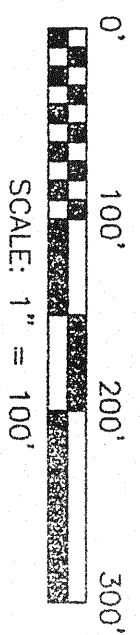
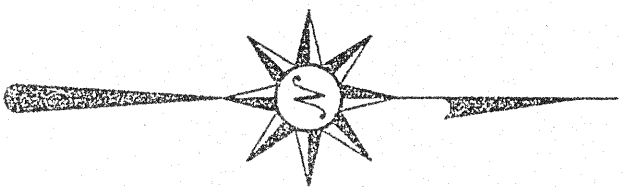


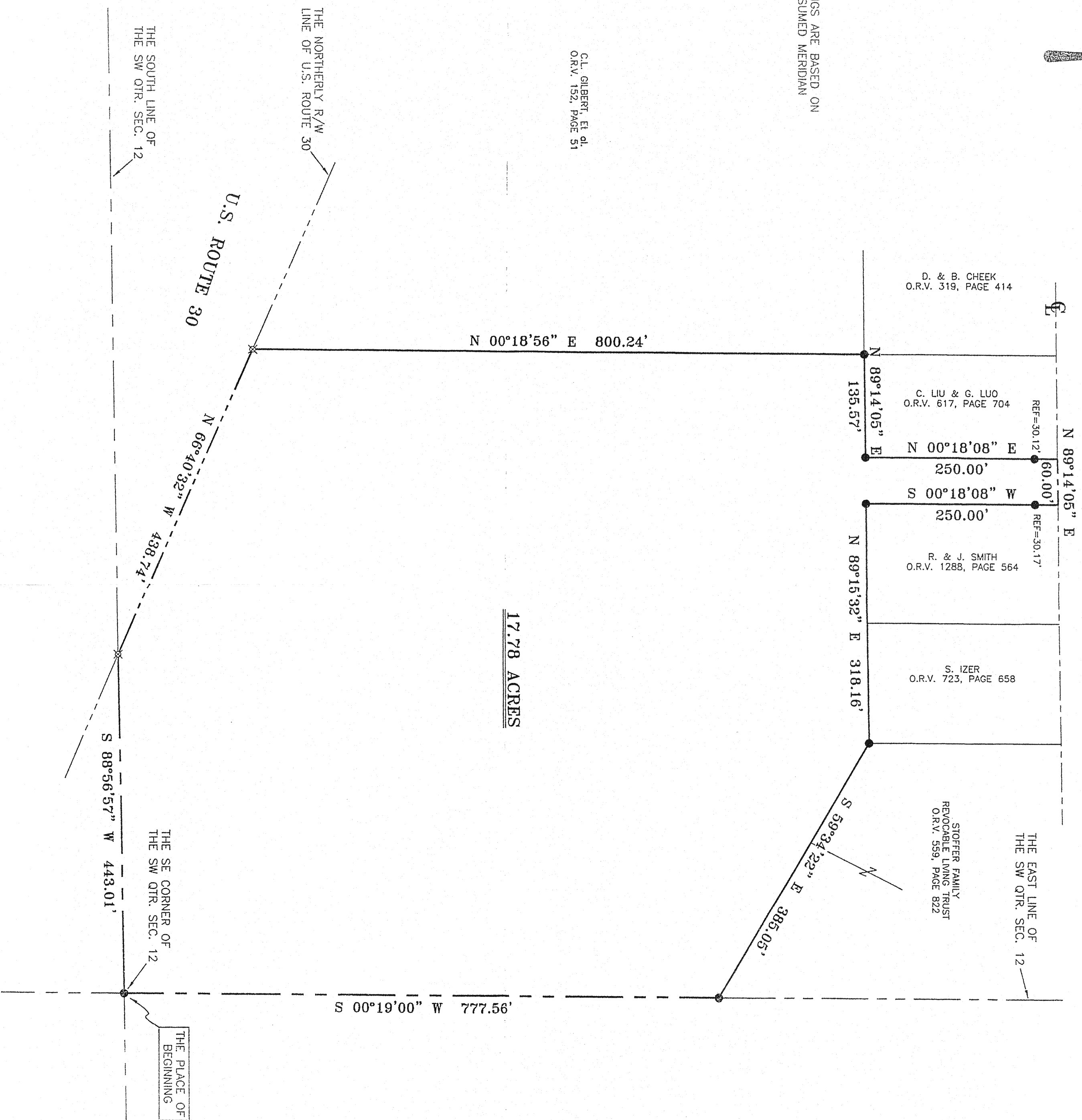
NOT TO SCALE



WALKER LAKE ROAD (C.H. 164)

BEARINGS ARE BASED ON AN ASSUMED MERIDIAN

C.L. GILBERT, ET AL  
O.R.V. 152, PAGE 51



LEGEND

- IRON PIN FOUND
- ▲ RR SPIKE FOUND
- ♠ MAG NAIL SPIKE SET
- ⊗ IRON PIN SET WITH CAP STAMPED "SELLER AND CRAIG INC."

NEW SPLIT  
HIGHLAND COUNTY  
TAX MAP OFFICE

INITIAL DATE

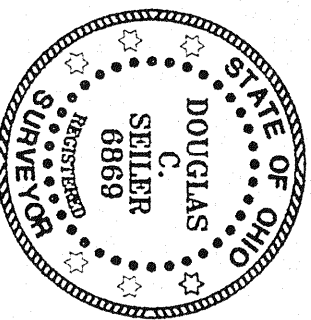
CITY OF ONTARIO  
APPROVED  
DATE Jan. 18, 2007

ZONING INSPECTOR  
*Michael Brudell*

SURVEY PLAT FOR  
**DONLEY**

PART SW QTR. SEC. 12, T-21, R-19  
CITY OF ONTARIO  
RICHLAND COUNTY, OHIO

DATE: JANUARY 8, 2007 SCALE: 1"=100'  
MEWARDS06



SURVEYED BY: *Douglas C. Seiler*  
DOUGLAS C. SEILER PS #68869  
FOR SELLER & CRAIG SURVEYING INC.  
52-1/2 NORTH MAIN STREET  
MANSFIELD, OHIO 44902  
(419) 525-3644  
FAX (419) 525-3696