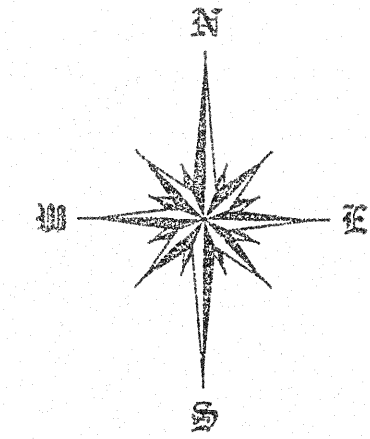
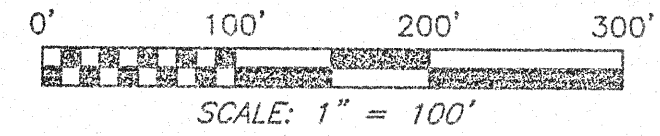
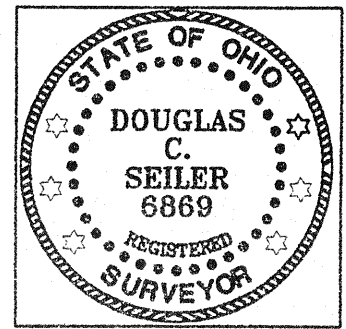
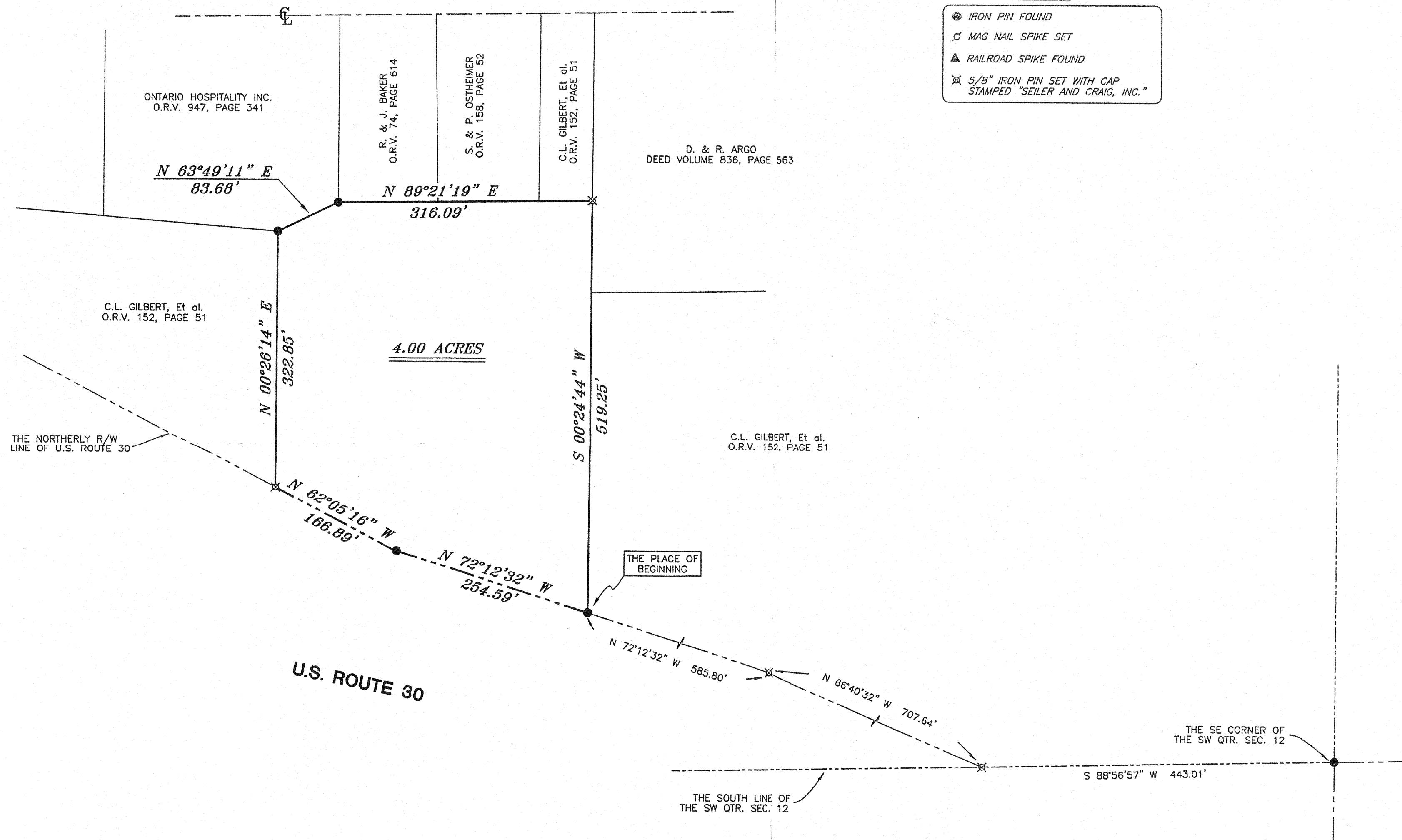


WALKER LAKE ROAD



Bearings are based on an assumed meridian and are intended to be used for angular determination only.

- LEGEND**
- IRON PIN FOUND
 - ⊕ MAG NAIL SPIKE SET
 - ▲ RAILROAD SPIKE FOUND
 - ⊗ 5/8" IRON PIN SET WITH CAP STAMPED "SEILER AND CRAIG, INC."



Douglas C. Seiler
 SURVEY BY: DOUGLAS C. SEILER PS. #6869
 for SEILER & CRAIG SURVEYING INC.
 52-1/2 NORTH MAIN STREET
 MANSFIELD, OHIO 44902
 (419) 525-3644
 FAX (419) 525-3696

CITY OF ONTARIO
 APPROVED
 DATE Jan. 18, 2007
 ZONING INSPECTOR
Dallas Stuchlik

NEW SPLIT
 RICHLAND COUNTY
 TAX MAP OFFICE
 INITIAL: EMK DATE: 1-19-07

SURVEY PLAT FOR FURNITURE ROW	
PART SW QTR. SEC. 12, T-21, R-19 RICHLAND COUNTY, OHIO	
DATE: NOVEMBER 21, 2006	SCALE: 1"=100'
MENARDS6.90	