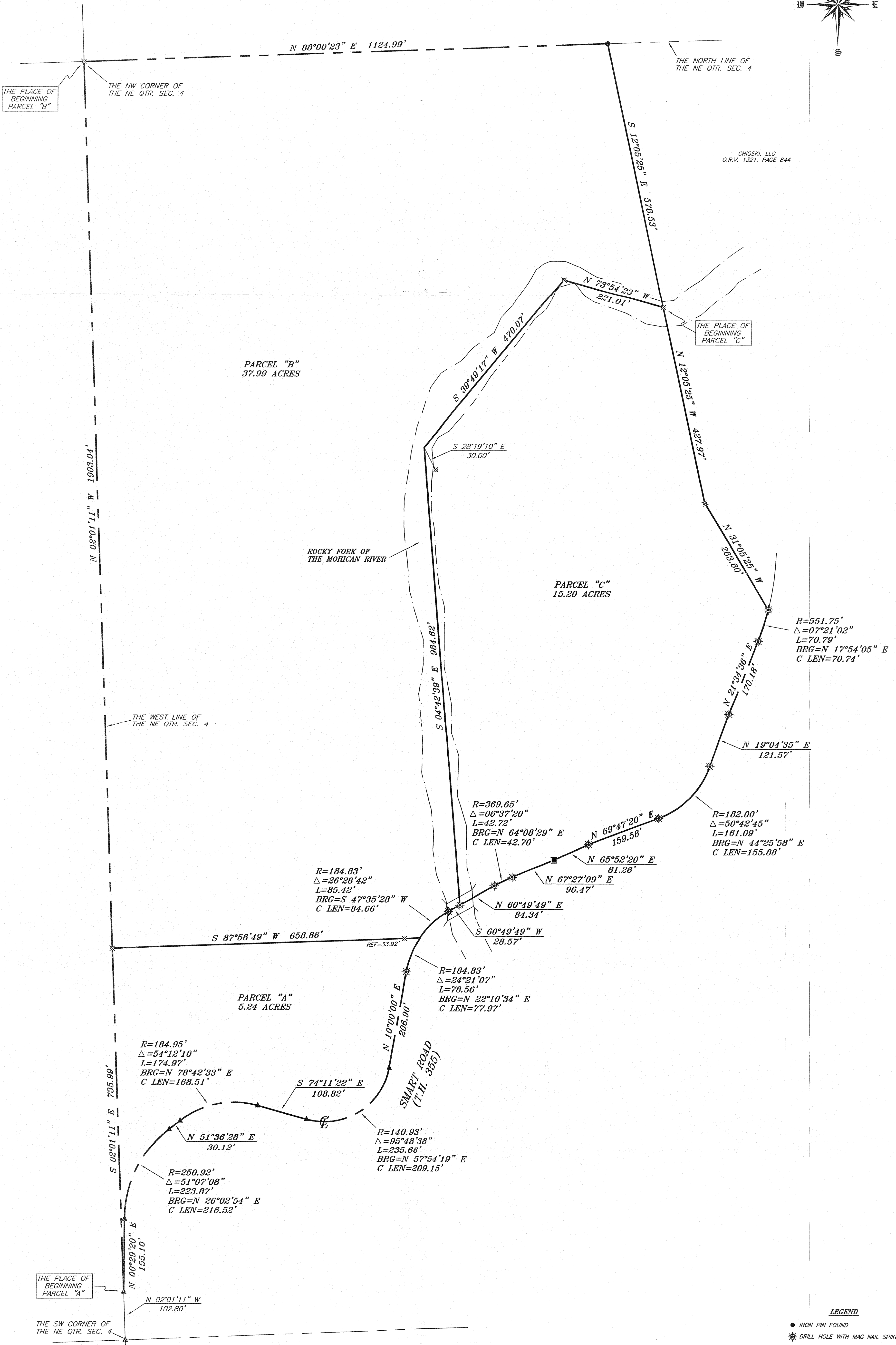
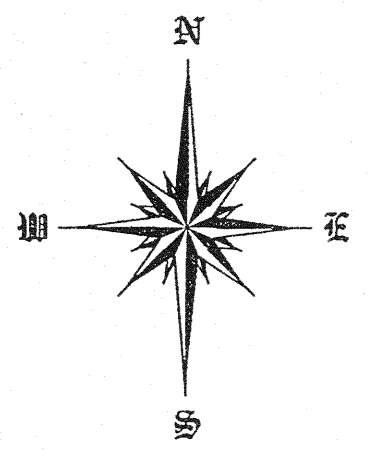
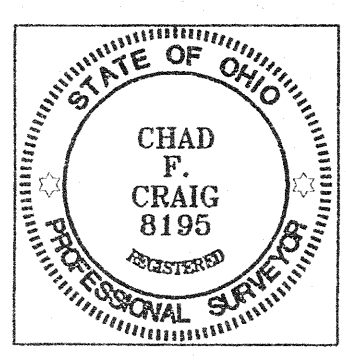


BEARINGS ARE BASED ON SURVEY T-5 ON FILE AT THE RICHLAND COUNTY TAX MAP OFFICE AND ARE INTENDED TO BE USED FOR ANGULAR DETERMINATION ONLY



CHOSKI, LLC  
O.R.V. 1321, PAGE 844



*mlc 12-02-04*  
*monroe township*  
*Richland County*

NEW SPLIT  
HIGHLAND COUNTY  
TAX MAP OFFICE  
INITIAL DATE

- LEGEND**
- IRON PIN FOUND
  - ⊗ DRILL HOLE WITH MAG NAIL SPIKE SET
  - IRON PIN IN MONUMENT BOX FOUND
  - ⊠ MAG NAIL SPIKE SET
  - ▲ RAILROAD SPIKE FOUND
  - ⊗ 5/8" IRON PIN SET WITH CAP STAMPED "SEILER AND CRAIG, INC."

CHAD F. CRAIG  
101 SEILER & CRAIG SURVEYING INC.  
52-1/2 NORTH MAIN STREET  
MANSFIELD, OHIO 44902  
(419) 524-7644

SURVEY PLAT FOR COOPER	
PART NE QTR. SEC. 4, T-22, R-17 MONROE TOWNSHIP RICHLAND COUNTY, OHIO	
DATE: NOVEMBER 16, 2006	SCALE: 1"=100'