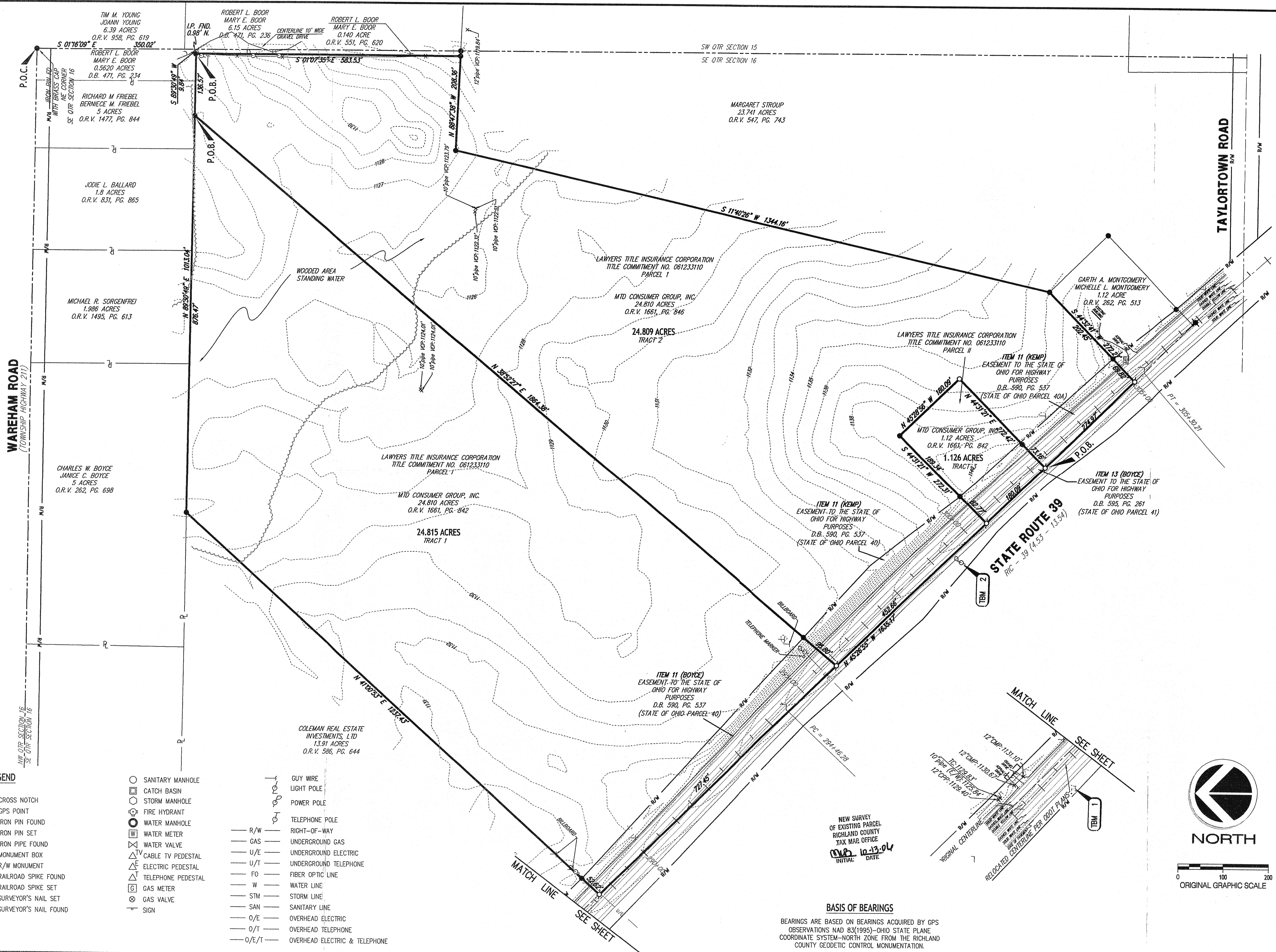


THE FACILITY GROUP

**MTD PRODUCTS
 FACILITY DESIGN GROUP
 BOUNDARY/TOPOGRAPHIC SURVEY
 SOUTHEAST QUARTER SECTION 16
 TOWNSHIP 22, RANGE 19
 CITY OF SHELBY
 RICHLAND COUNTY, OHIO**

PROJECT NO.: 06-50440-010
 DRAWN BY: M SMITH
 CHECKED BY: M SMITH
 DATE ISSUED: JUNE 28, 2006

**BOUNDARY AND
 TOPOGRAPHIC SURVEY**



LEGEND

×	CROSS NOTCH	○	SANITARY MANHOLE	—	GUY WIRE			
●	GPS POINT	□	CATCH BASIN	—	LIGHT POLE			
⊙	IRON PIN FOUND	⊗	STORM MANHOLE	—	POWER POLE			
⊙	IRON PIN SET	⊙	FIRE HYDRANT	—	TELEPHONE POLE			
⊙	IRON PIPE FOUND	⊙	WATER MANHOLE	—	R/W	RIGHT-OF-WAY		
⊙	MONUMENT BOX	⊙	WATER METER	—	—	GAS	UNDERGROUND GAS	
⊙	R/W MONUMENT	⊙	WATER VALVE	—	—	—	UNDERGROUND ELECTRIC	
⊙	RAILROAD SPIKE FOUND	⊙	CABLE TV PEDESTAL	—	—	—	UNDERGROUND TELEPHONE	
⊙	RAILROAD SPIKE SET	⊙	ELECTRIC PEDESTAL	—	—	—	FO	FIBER OPTIC LINE
⊙	SURVEYOR'S NAIL SET	⊙	TELEPHONE PEDESTAL	—	—	—	W	WATER LINE
⊙	SURVEYOR'S NAIL FOUND	⊙	GAS METER	—	—	—	STM	STORM LINE
		⊙	GAS VALVE	—	—	—	SAN	SANITARY LINE
		⊙	SIGN	—	—	—	O/E	OVERHEAD ELECTRIC
				—	—	—	O/T	OVERHEAD TELEPHONE
				—	—	—	O/E/T	OVERHEAD ELECTRIC & TELEPHONE

NEW SURVEY OF EXISTING PARCEL RICHLAND COUNTY TAX MAP OFFICE
 DATE: 10-13-04
 INITIAL: [Signature]

BASIS OF BEARINGS
 BEARINGS ARE BASED ON BEARINGS ACQUIRED BY GPS OBSERVATIONS NAD 83(1995)-OHIO STATE PLANE COORDINATE SYSTEM-NORTH ZONE FROM THE RICHLAND COUNTY GEODETIC CONTROL MONUMENTATION.

REVISED: SEPTEMBER 5, 2006 PER RICHLAND COUNTY ENGINEER COMMENTS