

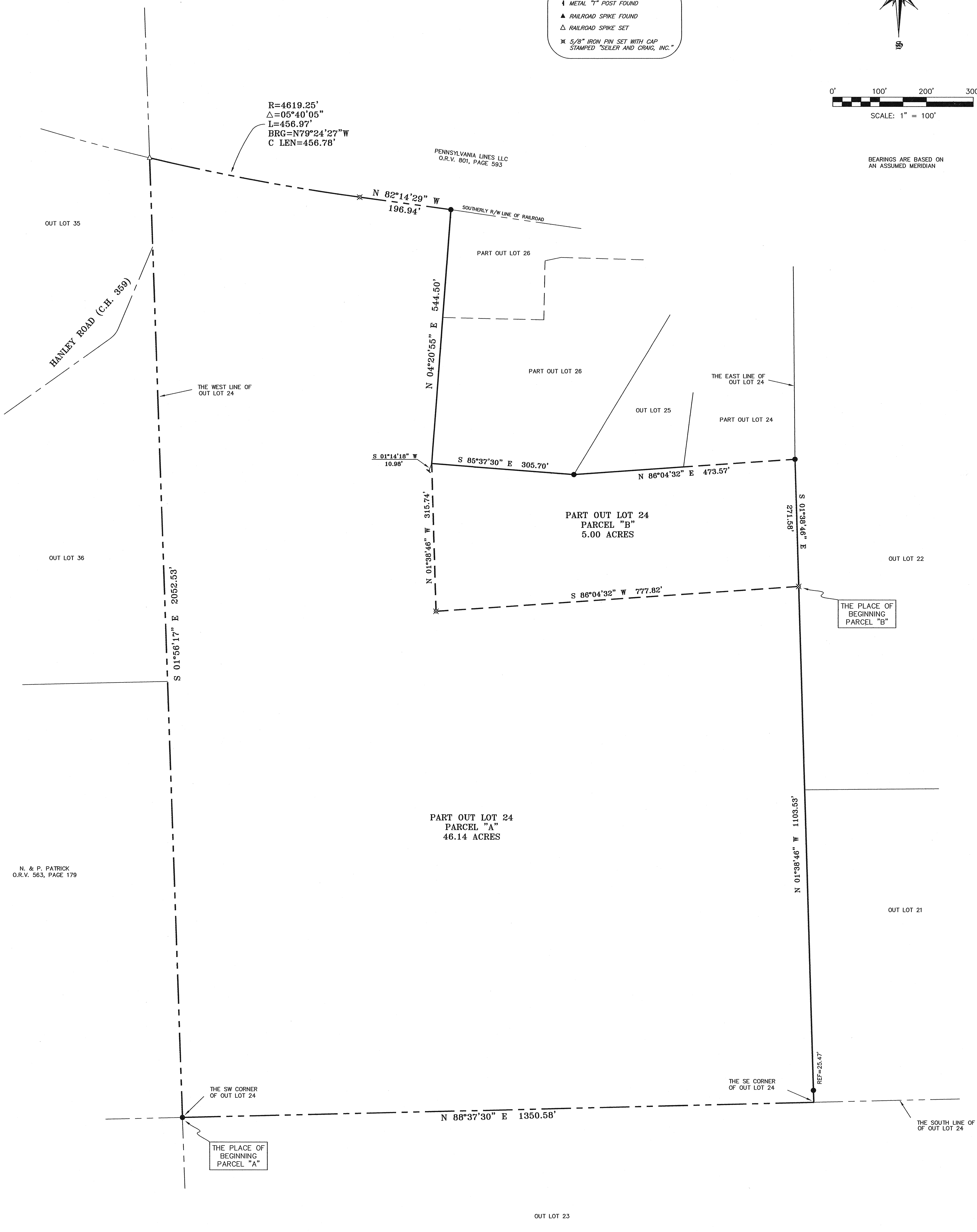
BEARINGS ARE BASED ON AN ASSUMED MERIDIAN

LEGEND

- IRON PIN FOUND
- ↓ METAL "T" POST FOUND
- ▲ RAILROAD SPIKE FOUND
- △ RAILROAD SPIKE SET
- ⊗ 5/8" IRON PIN SET WITH CAP STAMPED "SEILER AND CRAIG, INC."

R=4619.25'
 Δ=05°40'05"
 L=456.97'
 BRG=N79°24'27"W
 C LEN=456.78'

PENNSYLVANIA LINES LLC
 O.R.V. 801, PAGE 593



N. & P. PATRICK
 O.R.V. 563, PAGE 179

Chad F. Craig
 SURVEY BY: CHAD F. CRAIG P.S. #8195
 for SEILER & CRAIG SURVEYING INC.
 52-1/2 NORTH MAIN STREET
 HANDELSD, OHIO 44802
 (419) 525-3644
 FAX (419) 525-3696



NEW SPLIT
 RICHLAND COUNTY
 TAX MAP OFFICE
 INITIAL: FC DATE: 8-21-06

NEW SURVEY
 OF EXISTING PARCEL
 RICHLAND COUNTY
 TAX MAP OFFICE
 INITIAL: FC DATE: 8-21-06

SURVEY PLAT FOR	
DEVON MILLER	
PART OUT LOT 24	
VILLAGE OF LUCAS	
RICHLAND COUNTY, OHIO	
DATE: AUGUST 17, 2006	SCALE: 1"=100'
DEVON06	