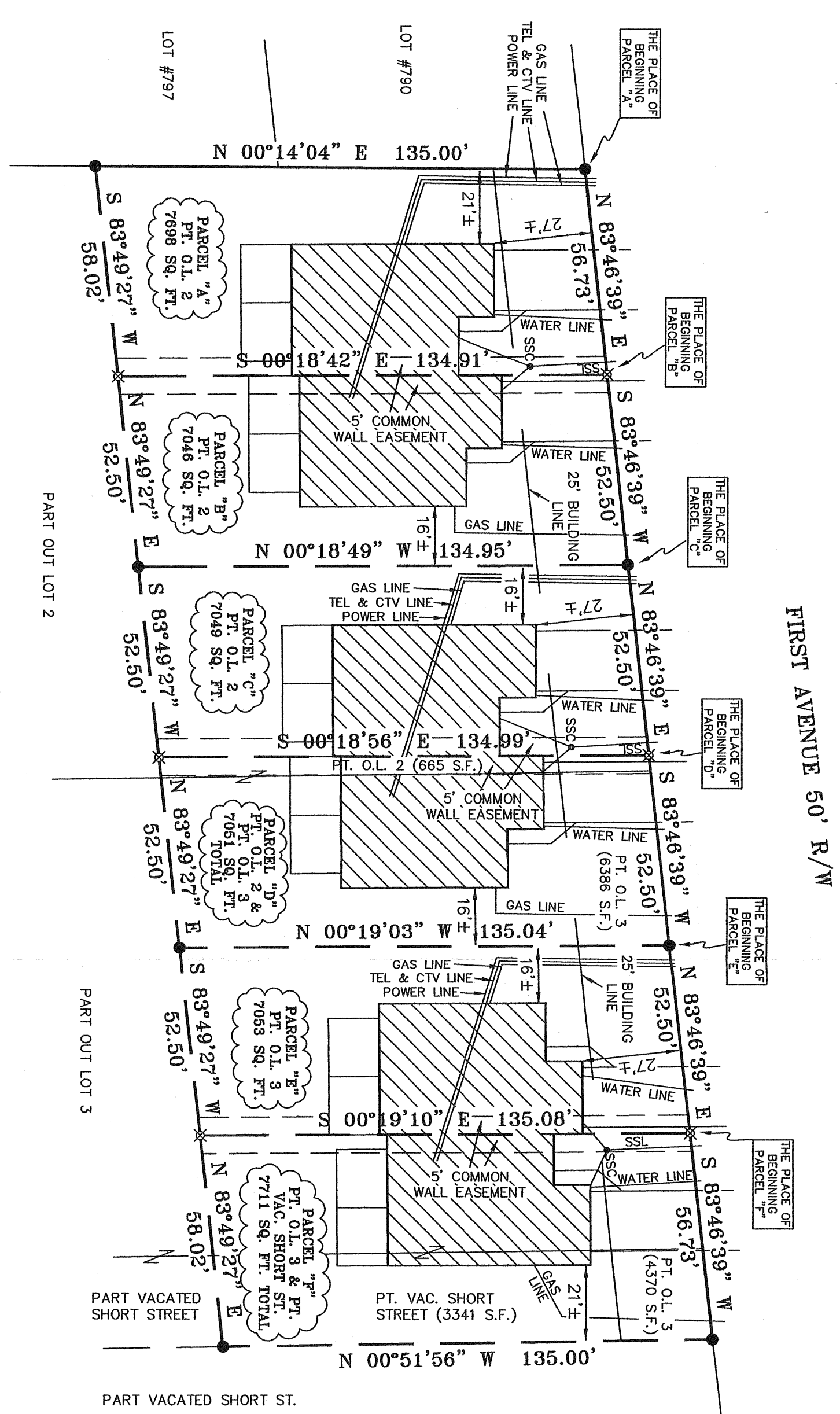
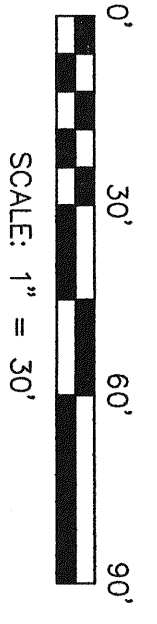
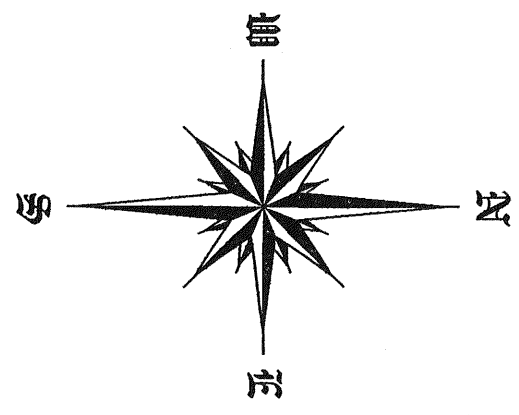


- LEGEND**
- IRON PIN FOUND
  - ⊗ 5/8" IRON PIN SET WITH CAP STAMPED "SEILER AND CRAIG, INC."
  - SSL SANITARY SEWER LINE
  - SSC SANITARY SEWER CLEAN OUT

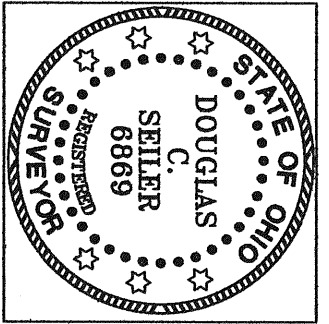


BEARINGS ARE BASED ON AN ASSUMED MERIDIAN AND ARE INTENDED TO BE USED FOR ANGULAR DETERMINATION ONLY.



NOTE: THE LOCATION OF THE TELEPHONE, GAS, POWER, CABLE TV, SANITARY SEWER, WATER LINES AND STRUCTURES AS SHOWN ON THIS PLAT ARE PROPOSED AND ARE TO BE INSTALLED BY THE GENERAL CONTRACTOR.

SURVEY BY: *[Signature]*  
 DOUGLAS G. SEILER P.S. #8869  
 FOR SEILER & CRAIG SURVEYING INC.  
 52-77 NORTH MAIN STREET  
 MANSTFIELD, OHIO 44902  
 (419) 525-3644  
 FAX (419) 525-3696



VILLAGE OF LEXINGTON  
**APPROVED**  
 Date: 08/14/2006  
 Initials: *[Signature]*

NEW SPLIT  
 HIGHLAND COUNTY  
 TAX MAP OFFICE  
 INITIAL: *[Signature]*  
 DATE: 8-31-06

NEW SURVEY  
 OF EXISTING PARCEL  
 HIGHLAND COUNTY  
 TAX MAP OFFICE  
 INITIAL: *[Signature]*  
 DATE: 8-31-06

SURVEY PLAT FOR	
JOHN HOFFMAN	
PART OUT LOT 2, PART OUT LOT 3 & PART VACATED SHORT STREET, VILLAGE OF LEXINGTON, RICHLAND COUNTY, OHIO	
DATE: AUGUST 14, 2006	SCALE: 1"=30'
JOHNHOFFLEX	