

COUNTY ENGINEER'S RECOMMENDATION:

I HEREBY CERTIFY THAT THE DESCRIPTION ON THE PETITION COINCIDES WITH THE DESCRIPTION ON THE PLAT.

Thomas E. Duk 2/23/04
 RICHLAND COUNTY ENGINEER DATE

COUNTY COMMISSIONER'S APPROVAL:

I HEREBY CERTIFY THAT THIS PLAT WAS DULY APPROVED BY THE BOARD OF COMMISSIONERS, RICHLAND COUNTY, OHIO ON THIS 12 DAY OF MARCH, 1998

Cohen 2-18-2004
 COUNTY CLERK

VILLAGE OF LUCAS, OHIO ACCEPTANCE:

THE COUNCIL OF THE VILLAGE OF LUCAS, OHIO, IN REGULAR SESSION THIS 19th DAY OF July, 2006 PASSED ORDINANCE NO. R-09-98 TO EXTEND THE CORPORATION LIMITS OF SAID VILLAGE AS INDICATED ON THIS PLAT. Patricia Constance

COUNTY RECORDER:

FILED FOR RECORD ON THIS 9th DAY OF August, 2006
 AT 9:17 AM RECORDED THIS 9th DAY OF August, 199-2006
 IN OFFICIAL RECORDS VOLUME 30, PAGE 73
Sarah M. Davis REC

PROPERTY DESCRIPTION

Situated in the Township of Monroe, County of Richland, State of Ohio and being a part of the Northeast Quarter of Section 8, Township 22 North, Range 17 West, more particularly described as follows:

Beginning for the same at an iron pin set marking the southeast corner of Lot #154 of the consecutively numbered lots in the Village of Lucas; Thence, South 89 degrees 45 minutes 22 seconds East a distance of 200.00 feet to an iron pin set;

Thence, North 00 degrees 01 minutes 16 seconds West a distance of 225.00 feet to an iron pin set;

Thence, North 89 degrees 50 minutes 31 seconds West a distance of 200.00 feet to an iron pin set marking the northeast corner of Lot #156 in said Village;

Thence, South 00 degrees 01 minute 16 seconds East with the east line of said lot and the southerly prolongation thereof, a distance of 224.70 feet to the place of beginning, containing 1.03 acres, according to survey by Douglas C. Seiler, Professional Surveyor #6869 on September 25, 1997.

Prior deed reference: ORV 221, page 834.

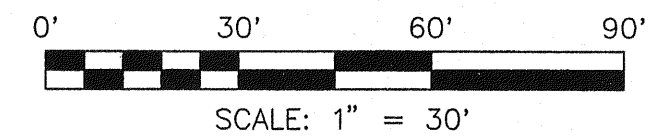
Permanent Parcel #018-14-129-06-000.

AUDITOR'S TRANSFER:

I HEREBY CERTIFY THAT THIS LAND WAS TRANSFERRED ON THIS 3rd DAY OF August, 2006

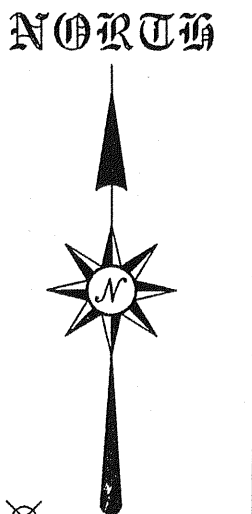
Patrick W. Drapary
 RICHLAND COUNTY AUDITOR

ANNEXATION PLAT
 VILLAGE OF LUCAS

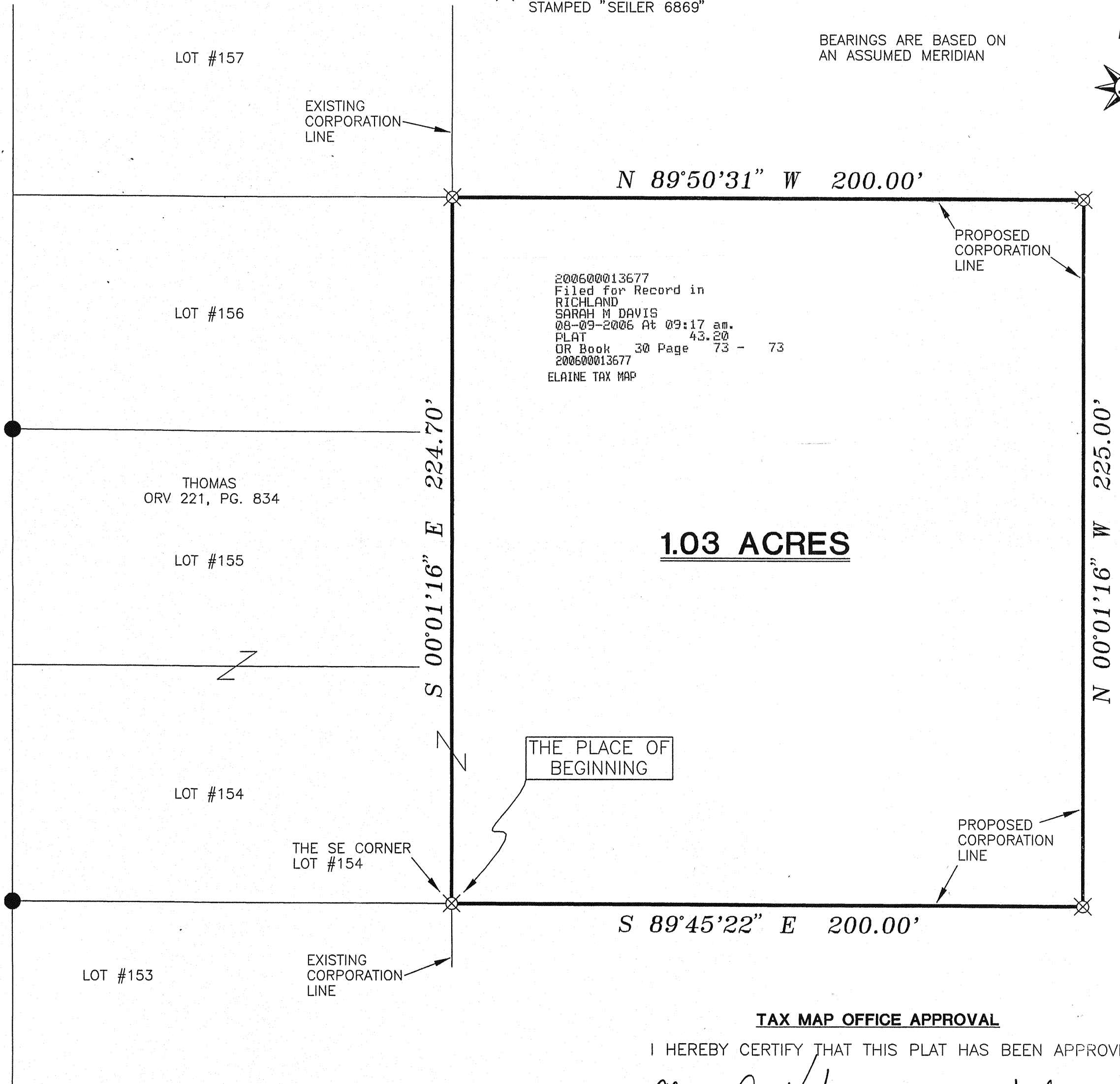


- IRON PIN FOUND
- ⊗ IRON PIN SET WITH CAP STAMPED "SEILER 6869"

BEARINGS ARE BASED ON AN ASSUMED MERIDIAN



BRIGHTWOOD AVENUE 60' R/W



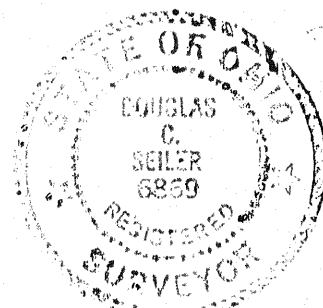
E. B. MCGREW
 O.R.V. 114, PAGE 210

TAX MAP OFFICE APPROVAL

I HEREBY CERTIFY THAT THIS PLAT HAS BEEN APPROVED.
Elaine A. Kiefer July 27, 2006
 DATE

SURVEYOR'S CERTIFICATION:

I HEREBY CERTIFY THAT THIS PLAT REPRESENTS THE PROPERTY TO BE ANNEXED BASED ON A BOUNDARY SURVEY OF THE SAME.



Douglas C. Seiler 1/12/98
 DOUGLAS C. SEILER
 PROFESSIONAL SURVEYOR #6869
 52 1/2 NORTH MAIN STREET
 MANSFIELD, OHIO 44902
 (419) 525-3644
 DATE

ANNEXATION PLAT FOR	
THOMAS	
PART NE QTR. SEC. 8, T-22, R-17 MONROE TOWNSHIP RICHLAND COUNTY, OHIO	
DATE: SEPTEMBER 25, 1997	SCALE: 1"=30'
C:\SC12\WORK\THOMAS\972880\JEB	