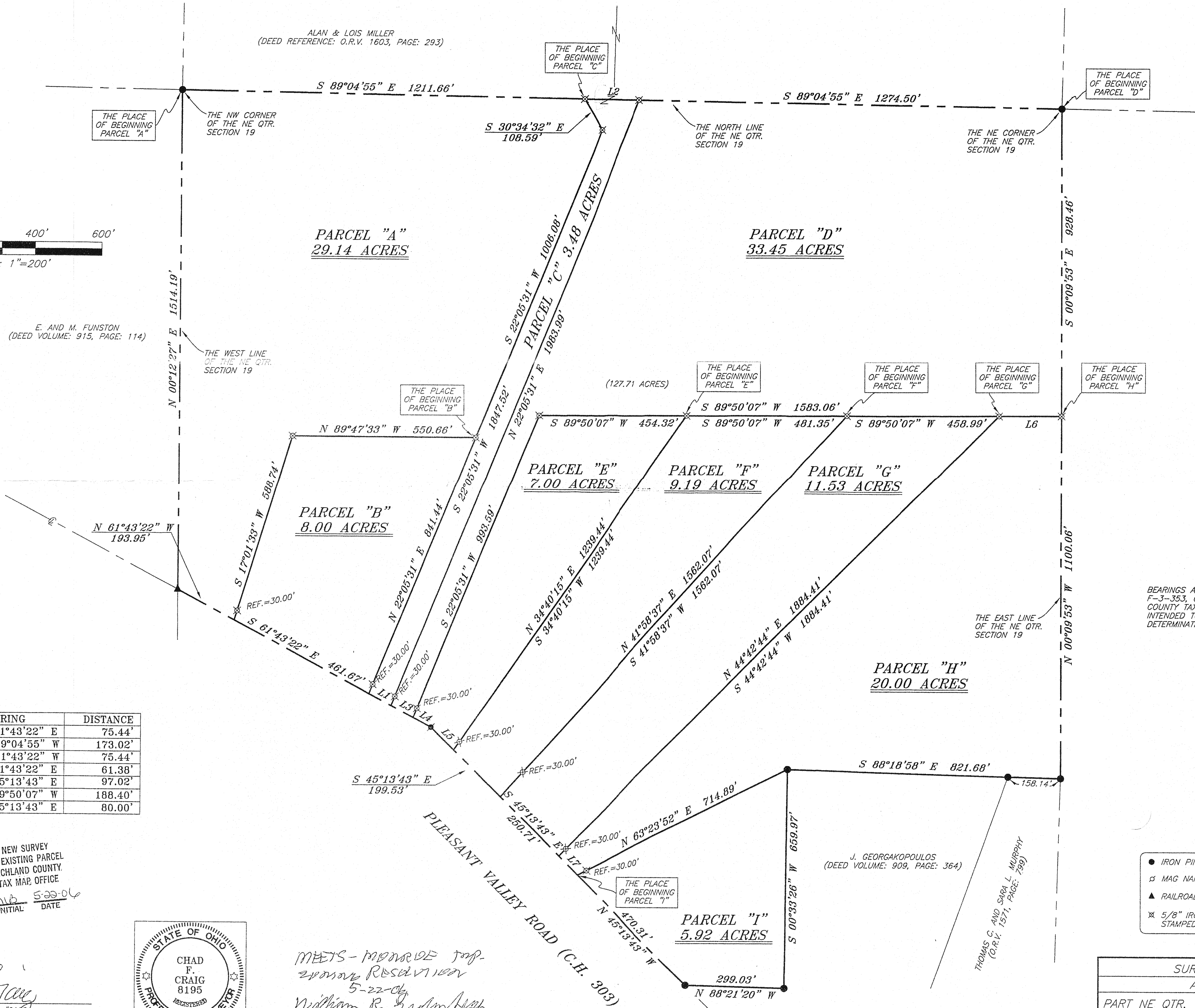


E. AND M. FUNSTON  
(DEED VOLUME: 915, PAGE: 114)

ALAN & LOIS MILLER  
(DEED REFERENCE: O.R.V. 1603, PAGE: 293)



BEARINGS ARE BASED ON SURVEY  
F-3-353, ON FILE AT THE RICHLAND  
COUNTY TAX MAP OFFICE AND ARE  
INTENDED TO BE USED FOR ANGULAR  
DETERMINATION ONLY.

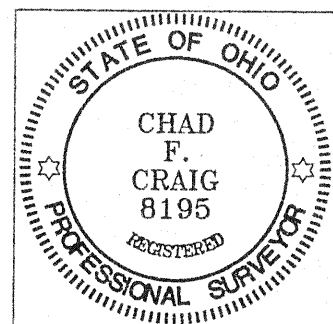
LINE	BEARING	DISTANCE
L1	S 61°43'22" E	75.44'
L2	N 89°04'55" W	173.02'
L3	N 61°43'22" W	75.44'
L4	S 61°43'22" E	61.38'
L5	S 45°13'43" E	97.02'
L6	S 89°50'07" W	188.40'
L7	S 45°13'43" E	80.00'

NEW SPLIT  
RICHLAND COUNTY  
TAX MAP OFFICE

mlb 5-22-06  
INITIAL DATE

NEW SURVEY  
OF EXISTING PARCEL  
RICHLAND COUNTY  
TAX MAP OFFICE

mlb 5-22-06  
INITIAL DATE



MEETS - MONROE TWP.  
RESERVATION  
5-22-06  
William R. Erdm High

**LEGEND**

- IRON PIN FOUND
- ⊠ MAG NAIL SPIKE SET
- ▲ RAILROAD SPIKE FOUND
- ⊗ 5/8" IRON PIN SET WITH CAP STAMPED "SEILER AND CRAIG, INC."

SURVEY PLAT FOR  
ALAN MILLER  
PART NE QTR. SECTION 19, T-22, R-17  
MONROE TOWNSHIP  
RICHLAND COUNTY, OHIO  
DATE: MAY 15, 2006 SCALE: 1"=200'  
MILLERPLSVLLY.DWG

SURVEY BY: CHAD F. CRAIG PS. #8195  
for SEILER & CRAIG SURVEYING INC.  
52-1/2 NORTH MAIN STREET  
MANSFIELD, OHIO 44902  
(419) 525-3644  
FAX (419) 525-3696