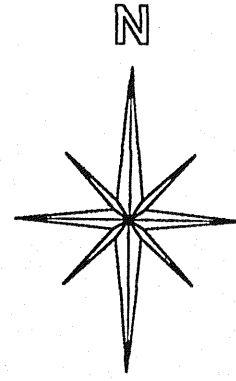
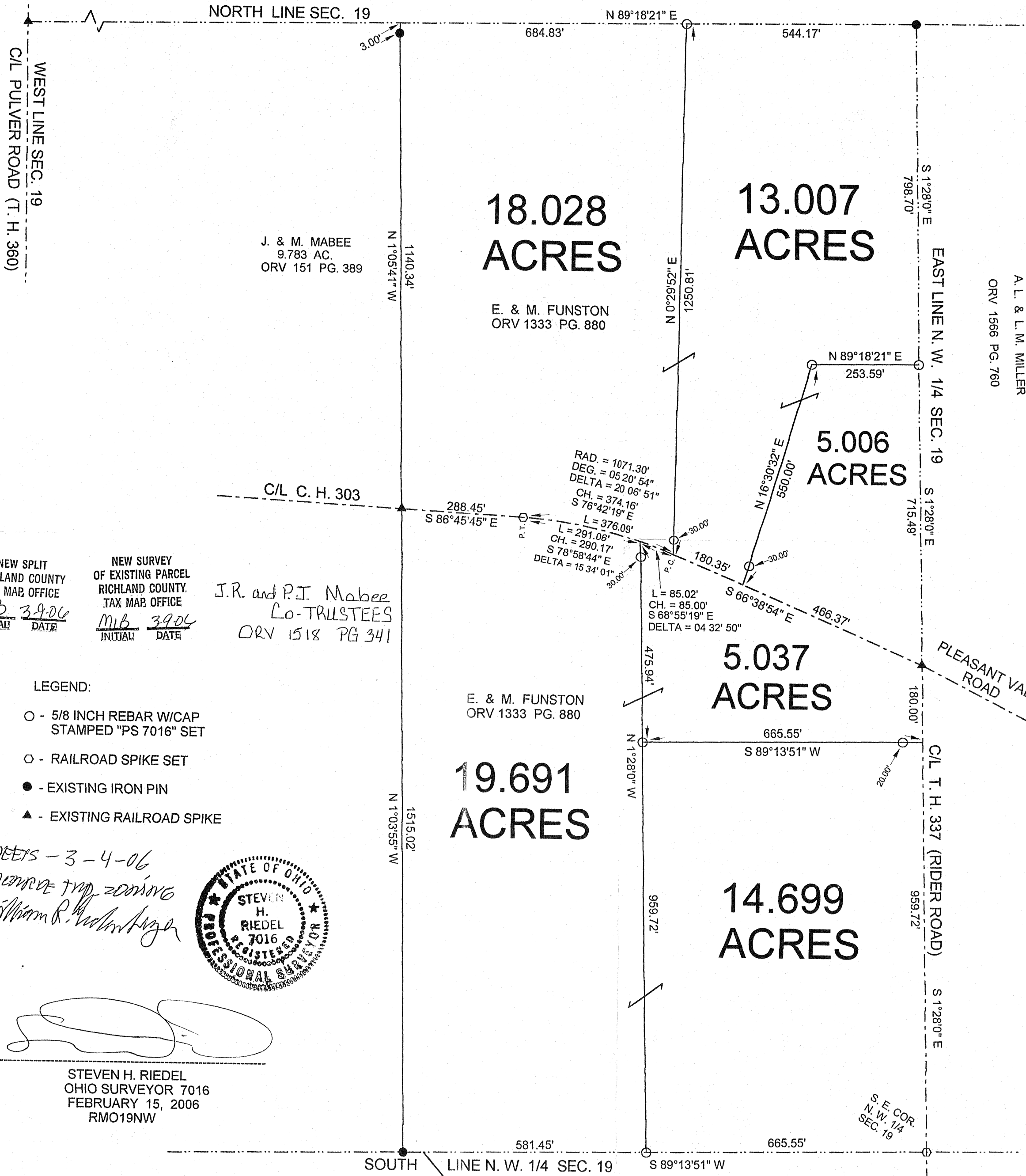


NORTHWEST QUARTER  
SECTION 19 T-22 R-17  
MONROE TOWNSHIP  
RICHLAND COUNTY, OHIO



BASIS OF BEARINGS:  
SURVEY INDEX "F-3-253"



J. & M. MABEE  
9.783 AC.  
ORV 151 PG. 389

18.028  
ACRES  
E. & M. FUNSTON  
ORV 1333 PG. 880

13.007  
ACRES  
A. L. & L. M. MILLER  
ORV 1566 PG. 760

5.006  
ACRES  
E. & M. FUNSTON  
ORV 1333 PG. 880

5.037  
ACRES  
E. & M. FUNSTON  
ORV 1333 PG. 880

19.691  
ACRES  
E. & M. FUNSTON  
ORV 1333 PG. 880

14.699  
ACRES  
K. E. + L. M. WESTFIELD  
7.37 AC.  
ORV 1388 PG. 72

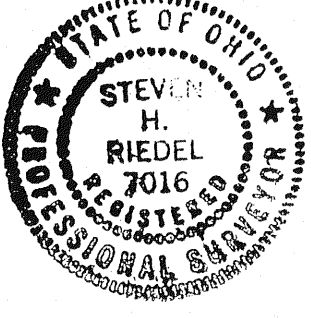
J.R. and P.I. Mabee  
Co-TRUSTEES  
ORV 1518 PG 341

NEW SPLIT  
RICHLAND COUNTY  
TAX MAP OFFICE  
MIB 3-9-06  
INITIAL DATE

NEW SURVEY  
OF EXISTING PARCEL  
RICHLAND COUNTY  
TAX MAP OFFICE  
MIB 3-9-06  
INITIAL DATE

- LEGEND:
- - 5/8 INCH REBAR W/CAP  
STAMPED "PS 7016" SET
  - - RAILROAD SPIKE SET
  - - EXISTING IRON PIN
  - ▲ - EXISTING RAILROAD SPIKE

MEETS - 3 - 4 - 06  
measure top zoning  
William R. ...



*[Signature]*

STEVEN H. RIEDEL  
OHIO SURVEYOR 7016  
FEBRUARY 15, 2006  
RMO19NW

