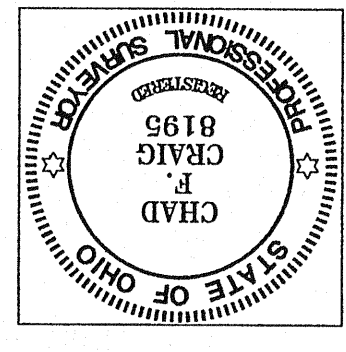
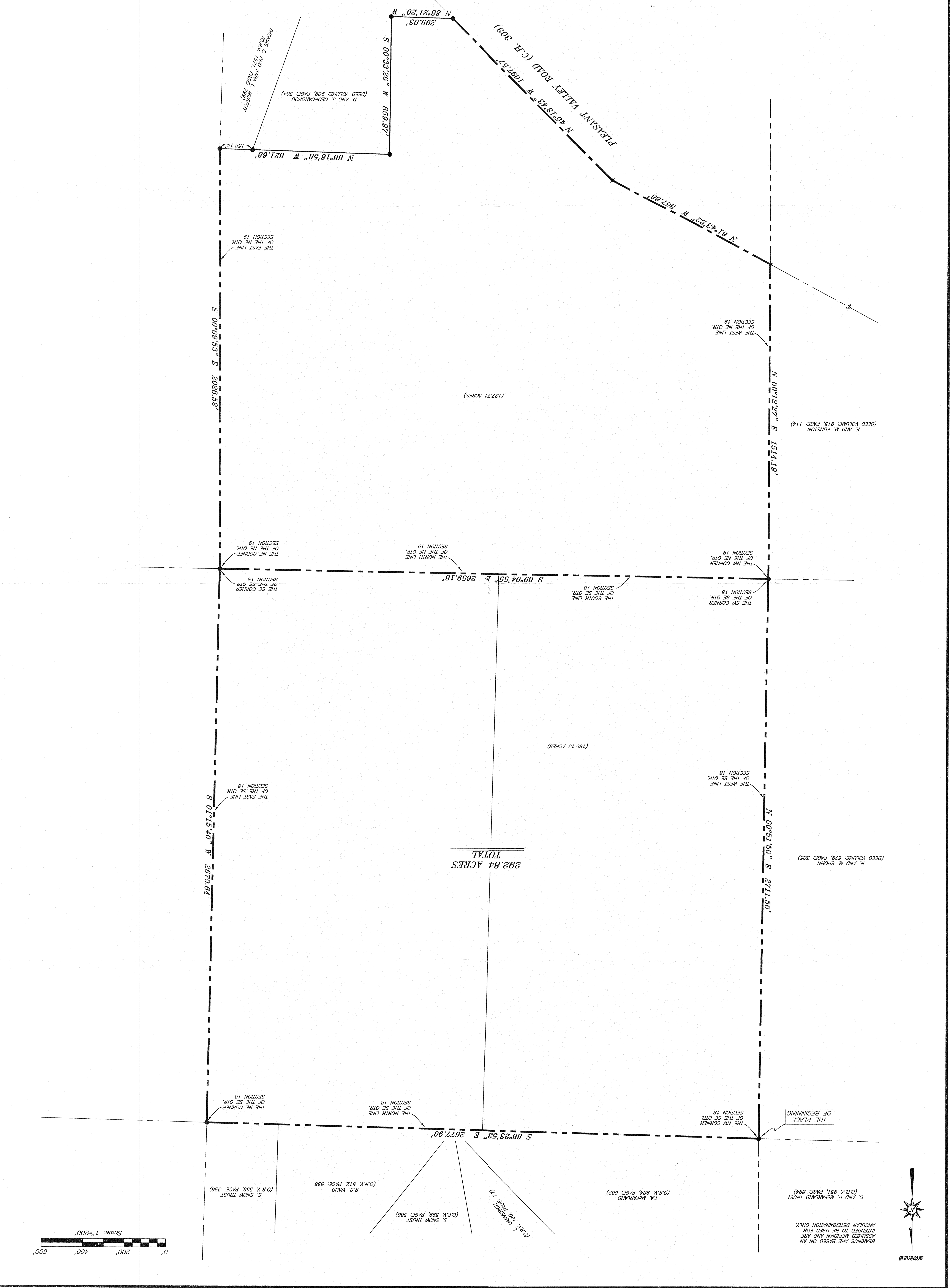


SURVEY PLAT FOR
 ALAN MILLER
 SE QTR. SECTION 18, PART NE QTR.
 TOWNSHIP RICHLAND COUNTY, OHIO
 DATE: OCTOBER 6, 2005
 SCALE: 1"=200'
 FUNSTON05.DWG

LEGEND
 ● IRON PIN FOUND
 ▲ SURVEY SPIKE FOUND
 ▼ RAILROAD SPIKE FOUND
 ✕ 5/8" IRON PIN SET WITH CAP
 STAMPED "SELER AND CRAIG, INC."



NEW SURVEY
 RICHLAND COUNTY
 TAX MAP OFFICE
 11/16/05
 INITIAL DATE
 SURVEY BY: CHAD F. CRAIG P.S., #8198
 FOR SELER & CRAIG SURVEYING INC.
 50-1/2 NORTH MAIN STREET
 MANSFIELD OHIO 44902
 (419) 325-3844
 FAX (419) 325-3896



Scale: 1"=200'
 0' 200' 400' 600'

