

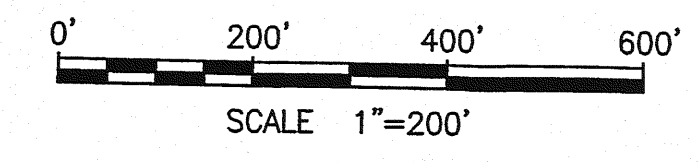
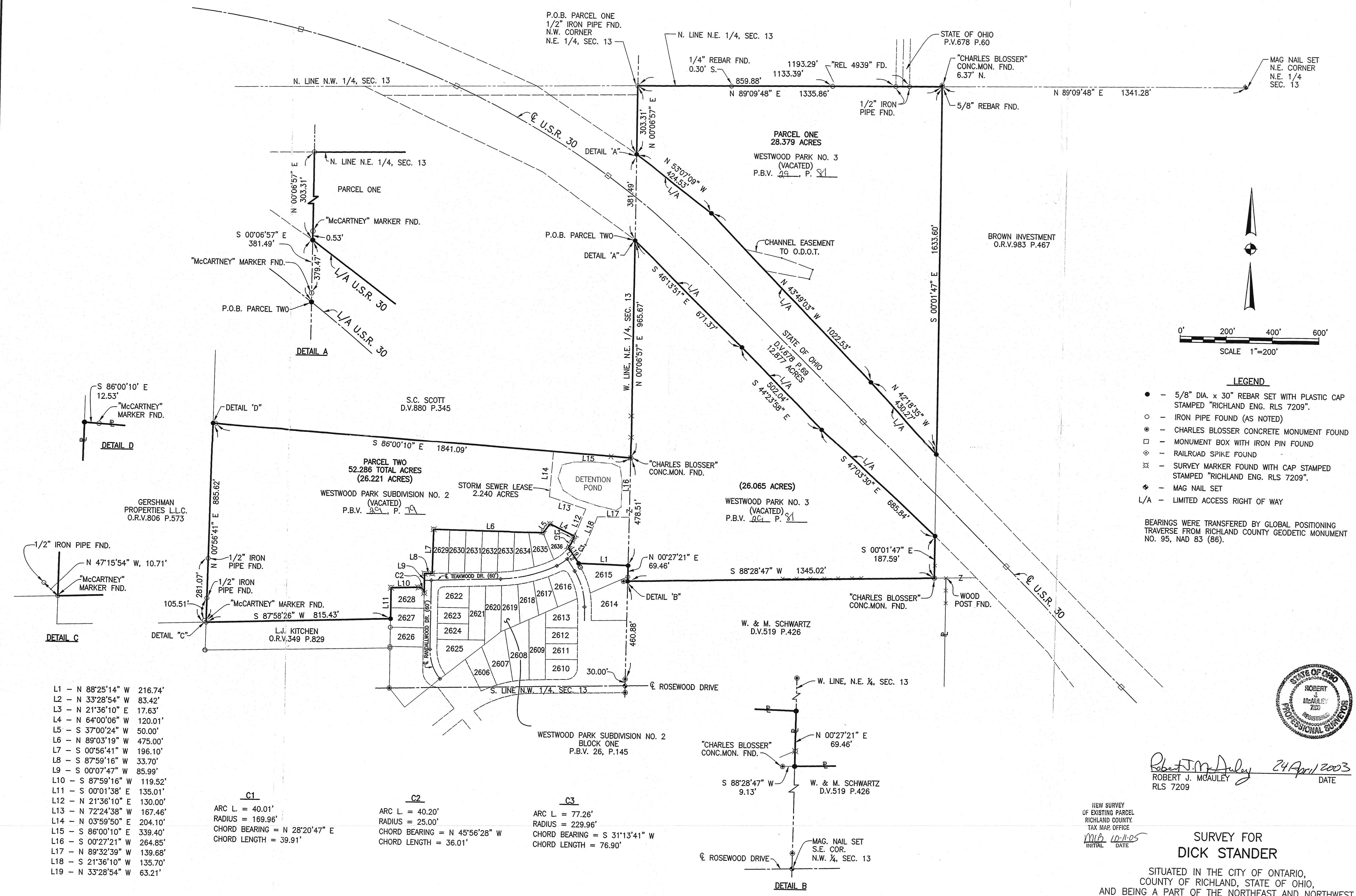
102163SUR  
 JOB NO. 102163 DATE 4/23/03 DRAWN BY HN,SIK

- L1 - N 88°25'14" W 216.74'
- L2 - N 33°28'54" W 83.42'
- L3 - N 21°36'10" E 17.63'
- L4 - N 64°00'06" W 120.01'
- L5 - S 37°00'24" W 50.00'
- L6 - N 89°03'19" W 475.00'
- L7 - S 00°56'41" W 196.10'
- L8 - S 87°59'16" W 33.70'
- L9 - S 00°07'47" W 85.99'
- L10 - S 87°59'16" W 119.52'
- L11 - S 00°01'38" E 135.01'
- L12 - N 21°36'10" E 130.00'
- L13 - N 72°24'38" W 167.46'
- L14 - N 03°59'50" E 204.10'
- L15 - S 86°00'10" E 339.40'
- L16 - S 00°27'21" W 264.85'
- L17 - N 89°32'39" W 139.68'
- L18 - S 21°36'10" W 135.70'
- L19 - N 33°28'54" W 63.21'

**C1**  
 ARC L = 40.01'  
 RADIUS = 169.96'  
 CHORD BEARING = N 28°20'47" E  
 CHORD LENGTH = 39.91'

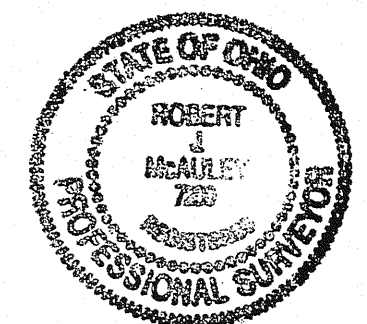
**C2**  
 ARC L = 40.20'  
 RADIUS = 25.00'  
 CHORD BEARING = N 45°56'28" W  
 CHORD LENGTH = 36.01'

**C3**  
 ARC L = 77.26'  
 RADIUS = 229.96'  
 CHORD BEARING = S 31°13'41" W  
 CHORD LENGTH = 76.90'



- LEGEND**
- - 5/8" DIA. x 30" REBAR SET WITH PLASTIC CAP STAMPED "RICHLAND ENG. RLS 7209".
  - - IRON PIPE FOUND (AS NOTED)
  - ⊙ - CHARLES BLOSSER CONCRETE MONUMENT FOUND
  - - MONUMENT BOX WITH IRON PIN FOUND
  - ⊞ - RAILROAD SPIKE FOUND
  - ⊗ - SURVEY MARKER FOUND WITH CAP STAMPED "RICHLAND ENG. RLS 7209".
  - ⊕ - MAG NAIL SET
  - L/A - LIMITED ACCESS RIGHT OF WAY

BEARINGS WERE TRANSFERRED BY GLOBAL POSITIONING TRAVERSE FROM RICHLAND COUNTY GEODETIC MONUMENT NO. 95, NAD 83 (86).



Robert J. McAuley  
 ROBERT J. MCAULEY  
 RLS 7209  
 DATE 24 April 2003

NEW SURVEY OF EXISTING PARCEL RICHLAND COUNTY TAX MAP OFFICE  
 INITIAL DATE  
 MIB 10-11-05

**SURVEY FOR DICK STANDER**

SITUATED IN THE CITY OF ONTARIO, COUNTY OF RICHLAND, STATE OF OHIO, AND BEING A PART OF THE NORTHEAST AND NORTHWEST QUARTERS OF SECTION 13, TOWNSHIP 21, RANGE 19.

RICHLAND ENGINEERING LIMITED  
 29 NORTH PARK STREET  
 MANSFIELD, OHIO 44902  
 DRAWN: HN  
 CHECKED: RMC  
 DESIGNED: RMC  
 REVISIONS: RMC  
**SURVEY**  
 DICK STANDER  
 00  
 00