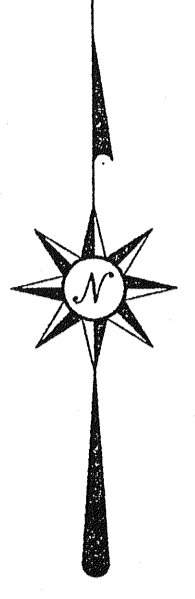
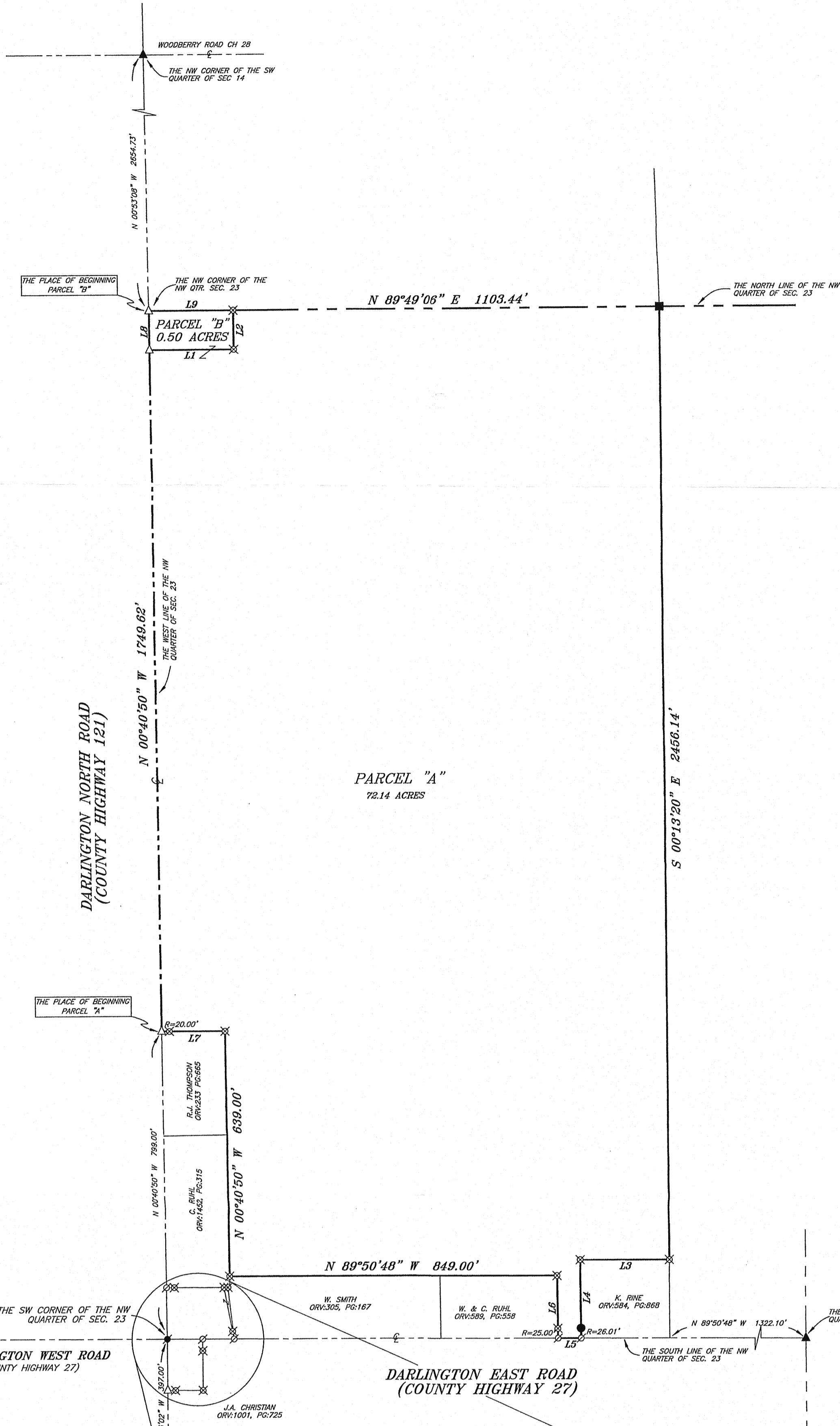
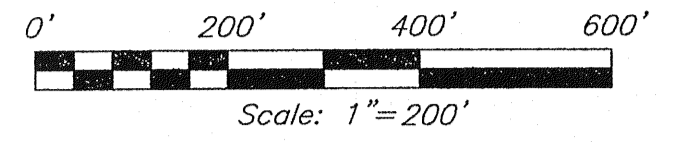


NORW



BEARINGS ARE BASED ON AN ASSUMED MERIDIAN AND ARE TO BE USED FOR ANGULAR DETERMINATION ONLY.



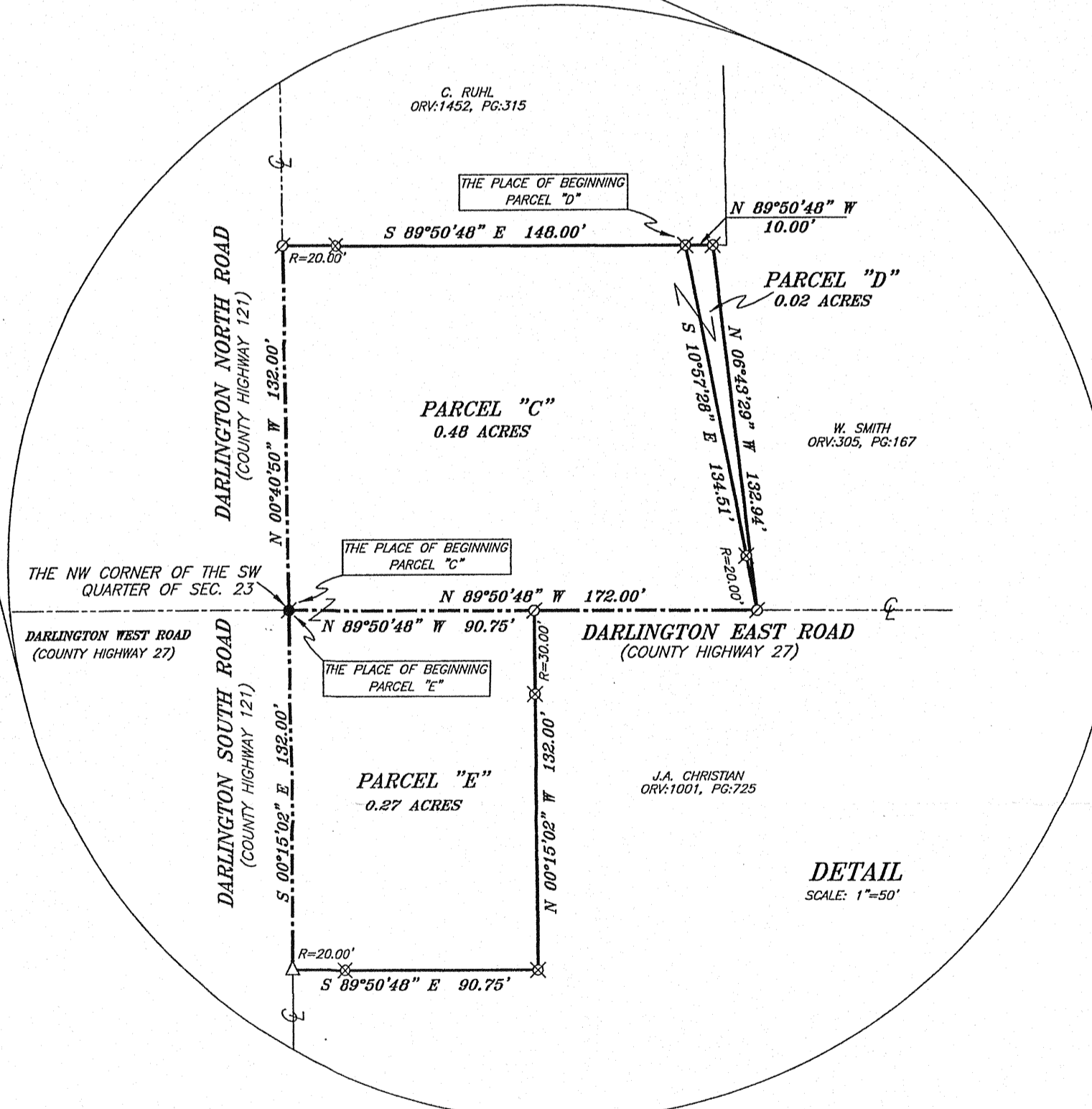
R.J. & A.L. WEEMHOFF  
ORV:354, PG:502

LEGEND

- IRON PIN FOUND
- ◆ MAG NAIL SPIKE FOUND
- ⊙ MAG NAIL SPIKE SET
- WOODEN FENCE POST FOUND
- ▲ RAILROAD SPIKE FOUND
- △ RAILROAD SPIKE SET
- ⊗ 5/8" IRON PIN SET WITH CAP STAMPED "SEILER AND CRAIG, INC."

LINE TABLE

LINE	BEARING	DISTANCE
L1	N 89°49'06" E	217.80'
L2	N 00°40'50" W	100.00'
L3	N 89°50'48" W	230.00'
L4	S 00°40'50" E	200.00'
L5	N 89°50'48" W	59.68'
L6	N 00°40'50" W	160.00'
L7	N 89°50'48" W	163.00'
L8	S 00°40'50" E	100.00'
L9	S 89°49'06" W	217.80'



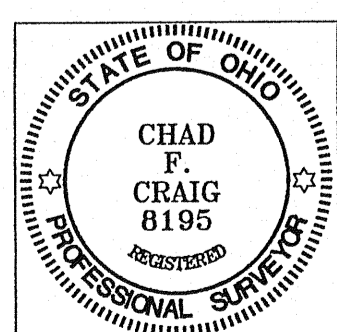
DETAIL  
SCALE: 1"=50'

NEW SPLIT  
HIGHLAND COUNTY  
TAX MAP OFFICE

MLB 8-13-05  
INITIAL DATE  
As to Parcel D  
Must Transfer  
before Parcel C

NEW SURVEY  
OF EXISTING PARCEL  
RICHLAND COUNTY  
TAX MAP OFFICE

MLB 8-13-05  
INITIAL DATE



Chad F. Craig

SURVEY BY: CHAD F. CRAIG, P.E., 8195  
for SEILER & CRAIG SURVEYING, INC.  
52-1/2 NORTH MAIN STREET  
MANSFIELD, OHIO 44802  
(419) 525-3644  
FAX (419) 525-3696

SURVEY PLAT FOR	
PAUL LEWIS	
PART NW & SW QUARTERS OF SEC 23	
PERRY TWP., T-19, R-19	
RICHLAND COUNTY, OHIO	
DATE: AUGUST 31, 2005	SCALE: 1"=200'
DRAWN BY: NBR	LEWIS05