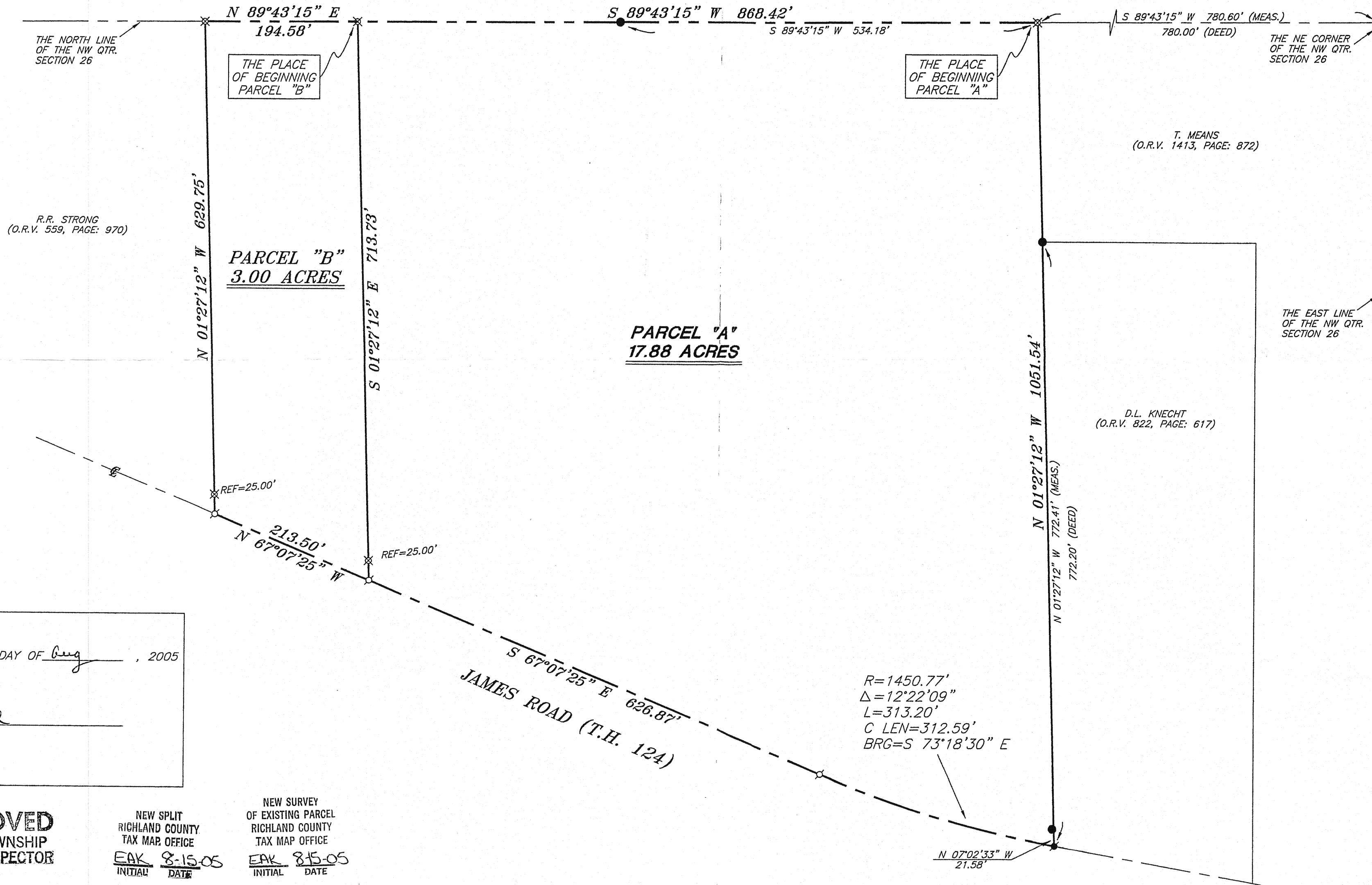


N 0° 0' 0" W



BEARINGS ARE BASED ON AN ASSUMED MERIDIAN AND ARE INTENDED TO BE USED FOR ANGULAR DETERMINATION ONLY.



R.R. STRONG
(O.R.V. 559, PAGE: 970)

PARCEL "B"
3.00 ACRES

PARCEL "A"
17.88 ACRES

T. MEANS
(O.R.V. 1413, PAGE: 872)

D.L. KNECHT
(O.R.V. 822, PAGE: 617)

APPROVED THIS 16 DAY OF Aug, 2005

Bruce Gorrell
BRUCE GORRELL
PERRY TOWNSHIP
ZONING INSPECTOR

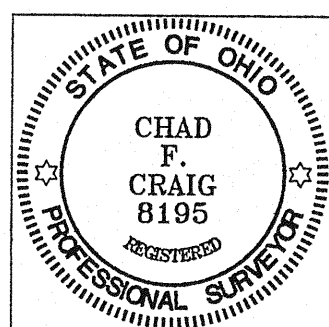
APPROVED
PERRY TOWNSHIP
ZONING INSPECTOR

NEW SPLIT
RICHLAND COUNTY
TAX MAP OFFICE

EAK 8-15-05
INITIAL DATE

NEW SURVEY
OF EXISTING PARCEL
RICHLAND COUNTY
TAX MAP OFFICE

EAK 8-15-05
INITIAL DATE



SURVEY BY: CHAD F. CRAIG PS. #8195
for SEILER & CRAIG SURVEYING INC.
52-1/2 NORTH MAIN STREET
MANSFIELD, OHIO 44902
(419) 525-3644
FAX (419) 525-3696

LEGEND

- IRON PIN FOUND
- ⊕ MAG NAIL SPIKE SET
- ⊙ MAG NAIL SPIKE FOUND
- ⊗ 5/8" IRON PIN SET WITH CAP
STAMPED "SEILER AND CRAIG, INC."

SURVEY PLAT FOR
JOHN STRONG

PART NW QTR. SECTION 26, T-19, R-19
PERRY TOWNSHIP
RICHLAND COUNTY, OHIO

DATE: JULY 19, 2005 SCALE: 1"=100'

STRONG05.DWG