

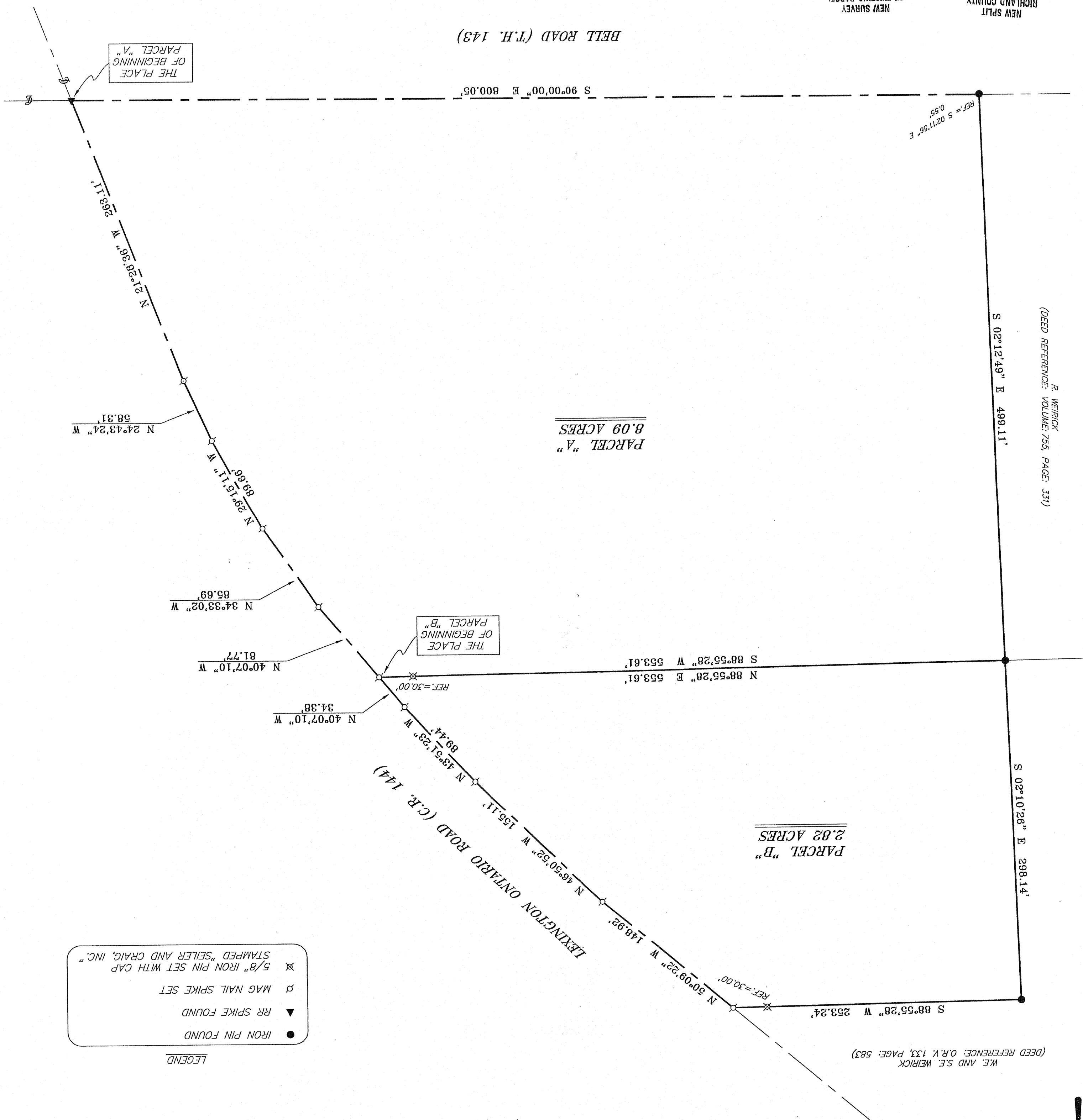
2748BELL.DWG
 DATE: APRIL 4, 2005
 SCALE: 1"=60'
 PART SE QTR. SECTION 3, T-20, R-19
 TROY TOWNSHIP
 RICHLAND COUNTY, OHIO
 ROGER WEIRICK
 SURVEY PLAT FOR



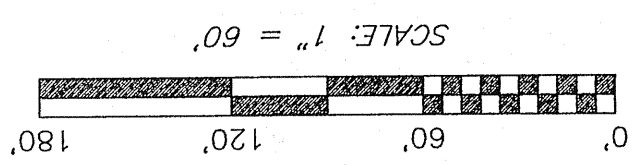
SURVEYED BY: CHAD F. CRAIG P.S. #8195
 for: SELLER & CRAIG SURVEYING, INC.
 52-1/2 NORTH MAIN STREET
 MANSFIELD, OHIO 44902
 (419) 525-3644
 FAX (419) 525-3696

NEW SURVEY
 OF EXISTING PARCEL
 RICHLAND COUNTY
 TAX MAP OFFICE
 MIB 4-25-05
 INITIAL DATE

NEW SPLIT
 RICHLAND COUNTY
 TAX MAP OFFICE
 MIB 4-25-05
 INITIAL DATE



- LEGEND**
- IRON PIN FOUND
 - ▲ RR SPIKE FOUND
 - MAG NAIL SPIKE SET
 - ⊗ 5/8" IRON PIN SET WITH CAP
 - ⊗ STAMPED "SELLER AND CRAIG, INC."



APPROVED THIS 21 DAY OF April, 2005
 Mike Diemer
 TROY TOWNSHIP
 ZONING INSPECTOR

