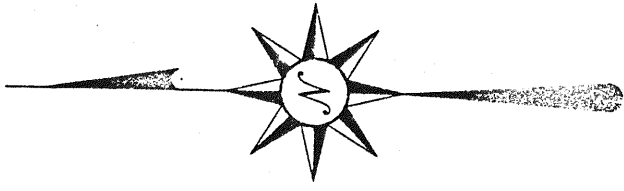
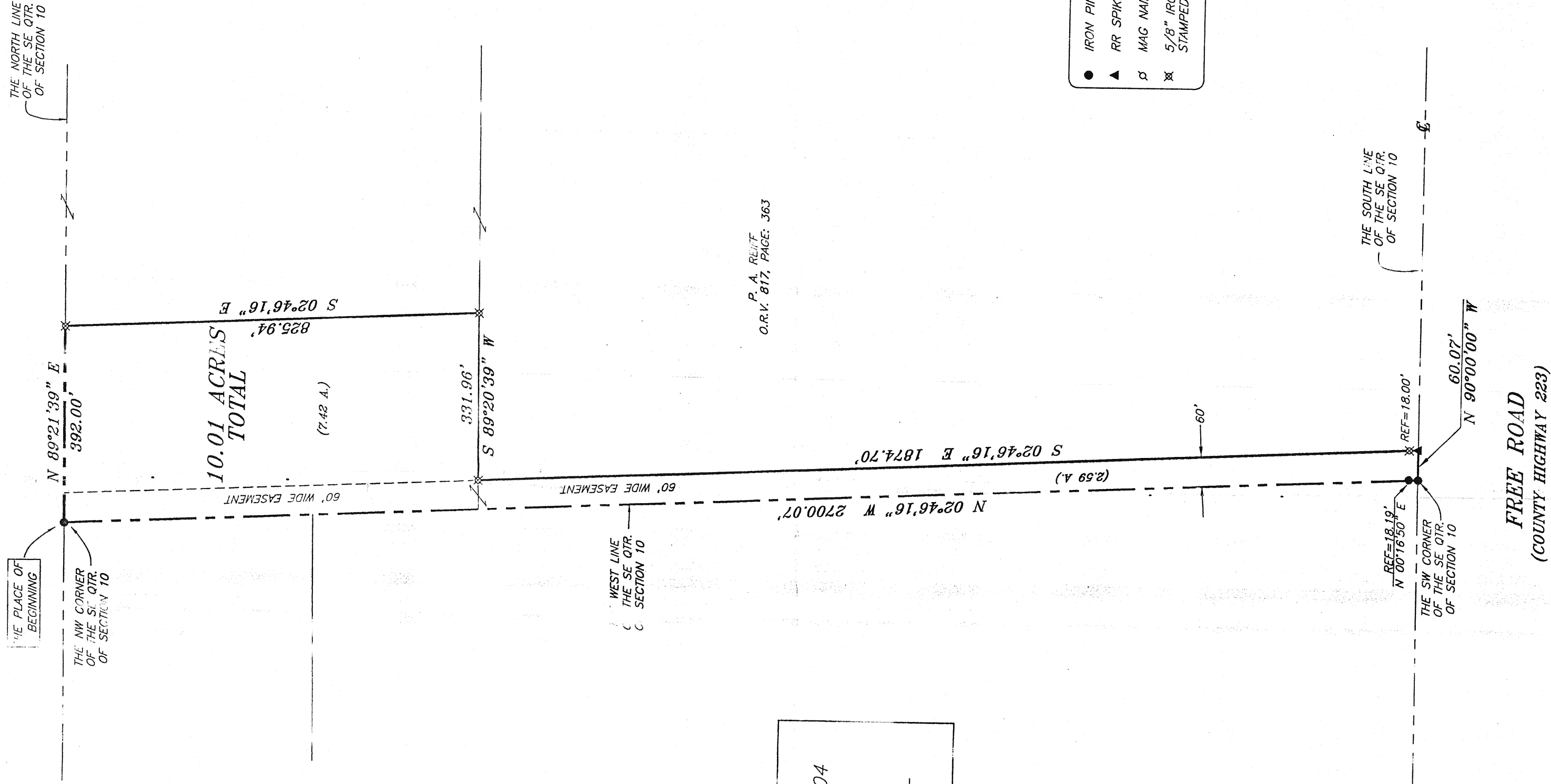
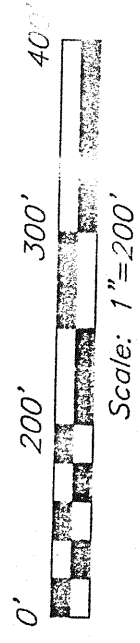


NORTH



BEARINGS ARE BASED ON AN ASSUMED MERIDIAN AND ARE INTENDED TO BE USED FOR ANGULAR DETERMINATION ONLY.



O.R.V. P. A. PLAT PAGE: 363

- LEGEND**
- IRON PIN FOUND
 - ▲ RR SPIKE SET
 - ⊕ MAG NAIL SPIKE SET
 - ⊗ 5/8" IRON PIN SET WITH CAP STAMPED "SEILER AND CRAIG, INC."

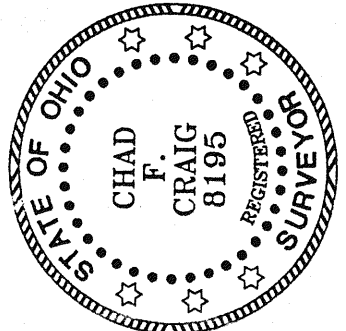
APPROVED THIS 16 DAY OF Dec, 2004

Terry Rhoades

TERRY RHOADES
BLOOMINGGROVE TWP. ZONING INSPECTOR

NEW SPLIT
RICHLAND COUNTY
TAX MAP OFFICE

FILED 12-30-04
DATE



Chad F. Craig

SURVEY BY: CHAD F. CRAIG PS. #8195
for SEILER & CRAIG SURVEYING INC.
32-1/2 NORTH MAIN STREET
MANSFIELD, OHIO 44902
(419) 525-3644
FAX (419) 525-3696

SURVEY	LAT FOR
RE	F
PART SE QTR. SECTION 10, T-23, R-18 BLOOMINGGROVE TOWNSHIP RICHLAND COUNTY, OHIO	
DATE: NOVEMBER 26, 2004	SCALE: 1"=200'
REIFFZ	DRAWN BY: R