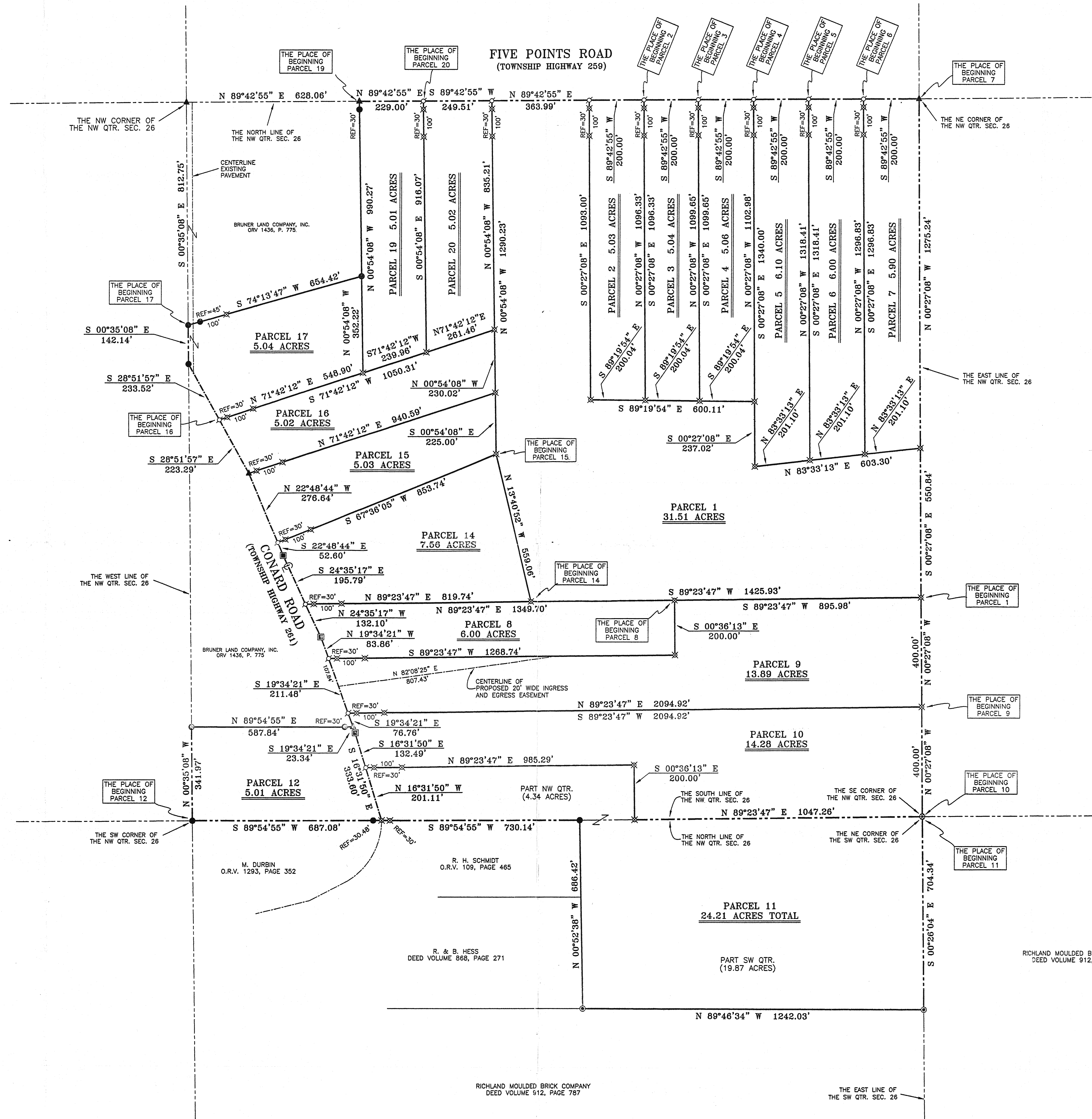
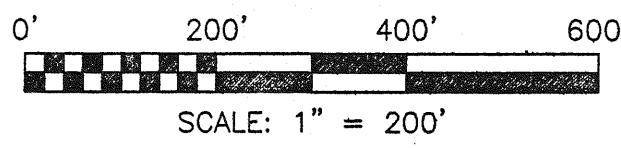


BEARINGS ARE BASED ON AN ASSUMED MERIDIAN AND ARE INTENDED TO BE USED FOR ANGULAR DETERMINATION ONLY.



LEGEND

- IRON PIN FOUND
- ▲ RR SPIKE FOUND
- △ RR SPIKE SET
- STONE FOUND
- IRON PIN IN MONUMENT BOX ASSEMBLY, FOUND
- CONCRETE MONUMENT FOUND
- ⊙ MAG NAIL SPIKE SET
- ⊗ IRON PIN SET WITH CAP STAMPED "SEILER AND CRAIG INC."

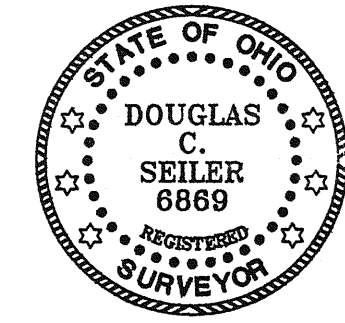
APPROVED THIS 8 DAY OF Oct, 2004

*Edwin K. (Jack) Rayfield*

JAKE LAYFIELD  
WELLER TOWNSHIP  
ZONING INSPECTOR

NEW SPLIT  
RICHLAND COUNTY  
TAX MAP OFFICE  
10/14/04  
INITIAL DATE

NEW SURVEY  
OF EXISTING PARCEL  
RICHLAND COUNTY  
TAX MAP OFFICE  
10/14/04  
INITIAL DATE



SURVEYED BY: DOUGLAS C. SEILER, PS #6869  
FOR SEILER & CRAIG SURVEYING INC.  
52-7/2 NORTH MAIN STREET  
MANSFIELD, OHIO 44902  
(419) 525-3644  
FAX (419) 525-3696

THE STATE OF OHIO  
O.R.V. 61, PAGE 903

RICHLAND MOULDED BRICK COMPANY  
DEED VOLUME 912, PAGE 787

R. & B. HESS  
DEED VOLUME 868, PAGE 271

R. H. SCHMIDT  
O.R.V. 109, PAGE 465

M. DURBIN  
O.R.V. 1293, PAGE 352

RICHLAND MOULDED BRICK COMPANY  
DEED VOLUME 912, PAGE 787

SURVEY PLAT FOR  
BRUNER LAND COMPANY, INC.

PART NW & SW QTR. SEC. 26, T-22,  
R-18, WELLER TOWNSHIP  
RICHLAND COUNTY, OHIO

DATE: SEPT. 30, 2004 SCALE: 1"=200'

BRUNER04