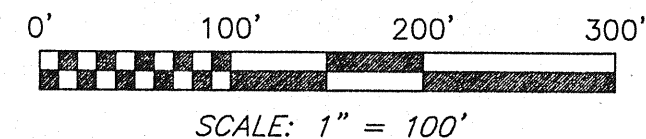


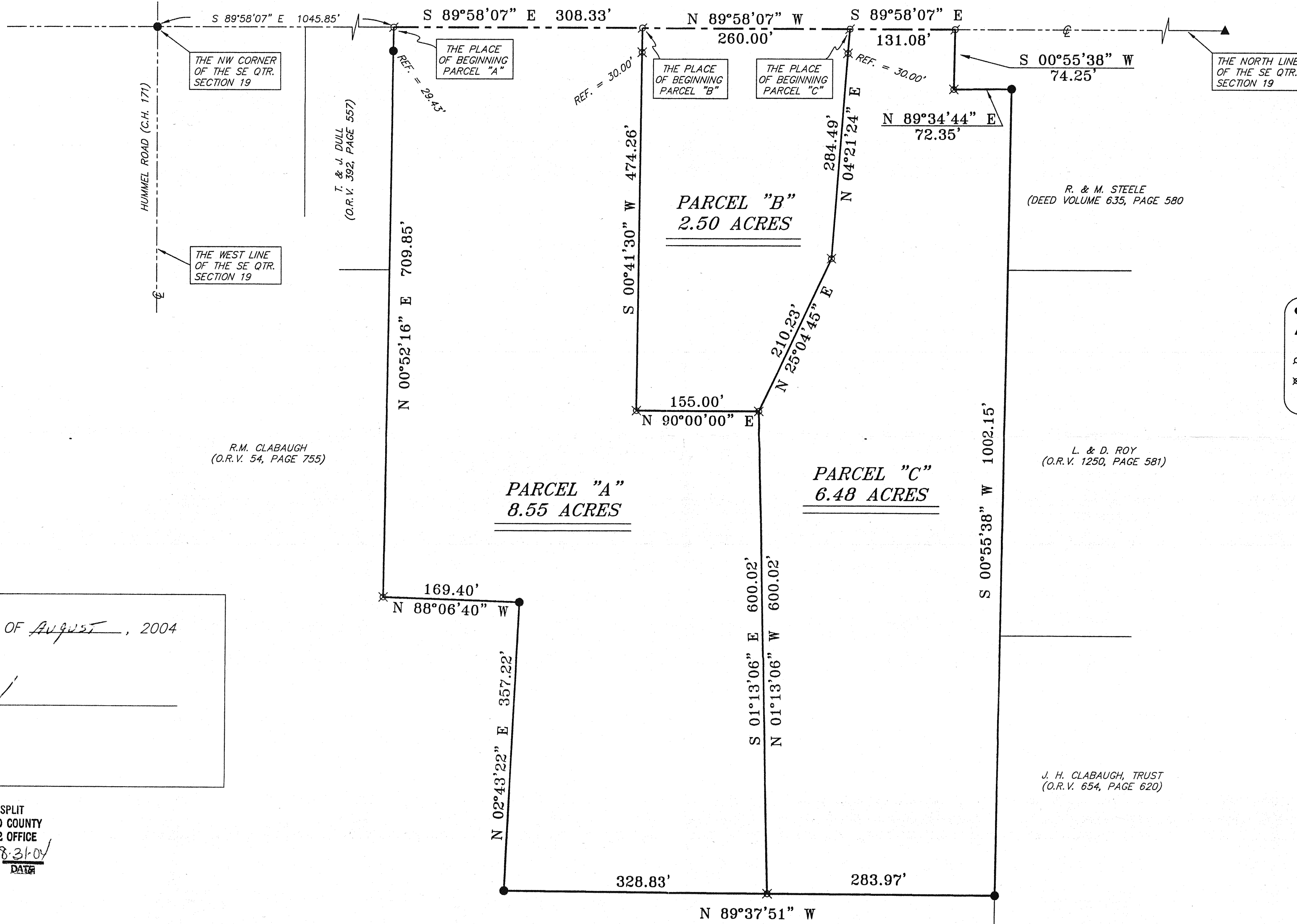
NORTH



BEARINGS ARE BASED ON AN ASSUMED MERIDIAN AND ARE INTENDED TO BE USED FOR ANGULAR DETERMINATION ONLY.



STATE ROUTE 61



LEGEND

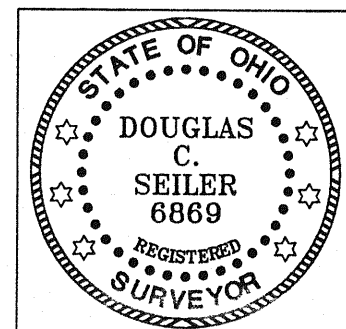
- IRON PIN FOUND
- ▲ IRON PIN IN MONUMENT BOX, FOUND
- ⊕ MAG NAIL SPIKE SET
- ⊗ 5/8" IRON PIN SET WITH CAP STAMPED "SEILER AND CRAIG, INC."

APPROVED THIS 29 DAY OF AUGUST, 2004

Allan Kempf
 ALLAN KEMPF
 SHARON TOWNSHIP
 ZONING INSPECTOR

NEW SURVEY. OF EXISTING PARCEL RICHLAND COUNTY TAX MAP OFFICE MLB 8-31-04 INITIAL DATE	NEW SPLIT RICHLAND COUNTY TAX MAP OFFICE MLB 8-31-04 INITIAL DATE
---	---

Douglas C. Seiler
 SURVEY BY: DOUGLAS C. SEILER P.S. #6869
 for SEILER & CRAIG SURVEYING, INC.
 52-172 NORTH MAIN STREET
 MANSFIELD, OHIO 44902
 (419) 525-3644
 FAX (419) 525-3696



SURVEY PLAT FOR	
LEWIS	
PART SE QTR. SECTION 19, T-22, R-19 SHARON TOWNSHIP RICHLAND COUNTY, OHIO	
DATE: AUGUST 17, 2004	SCALE: 1"=100'
LEWS61.DWG	